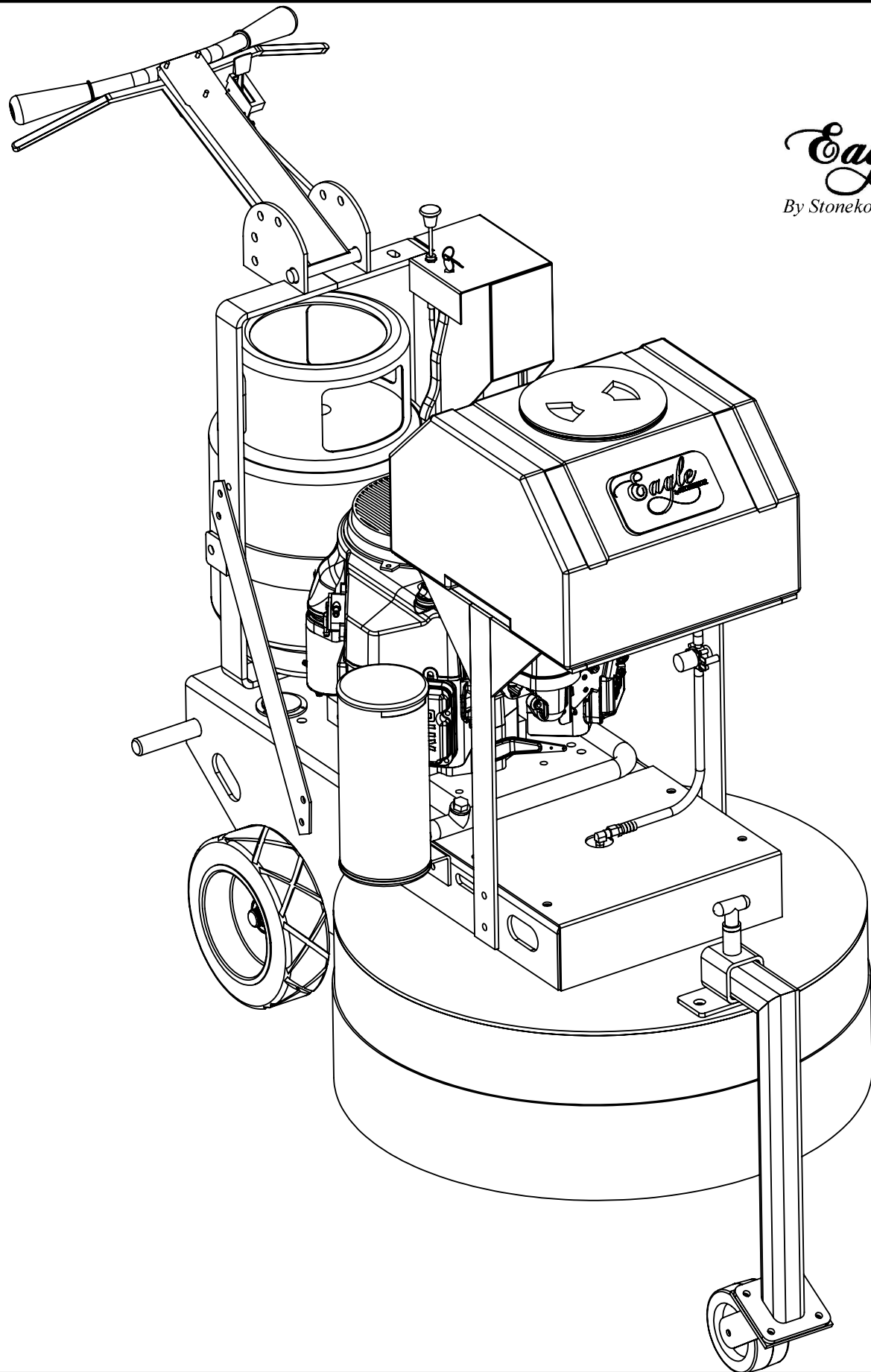


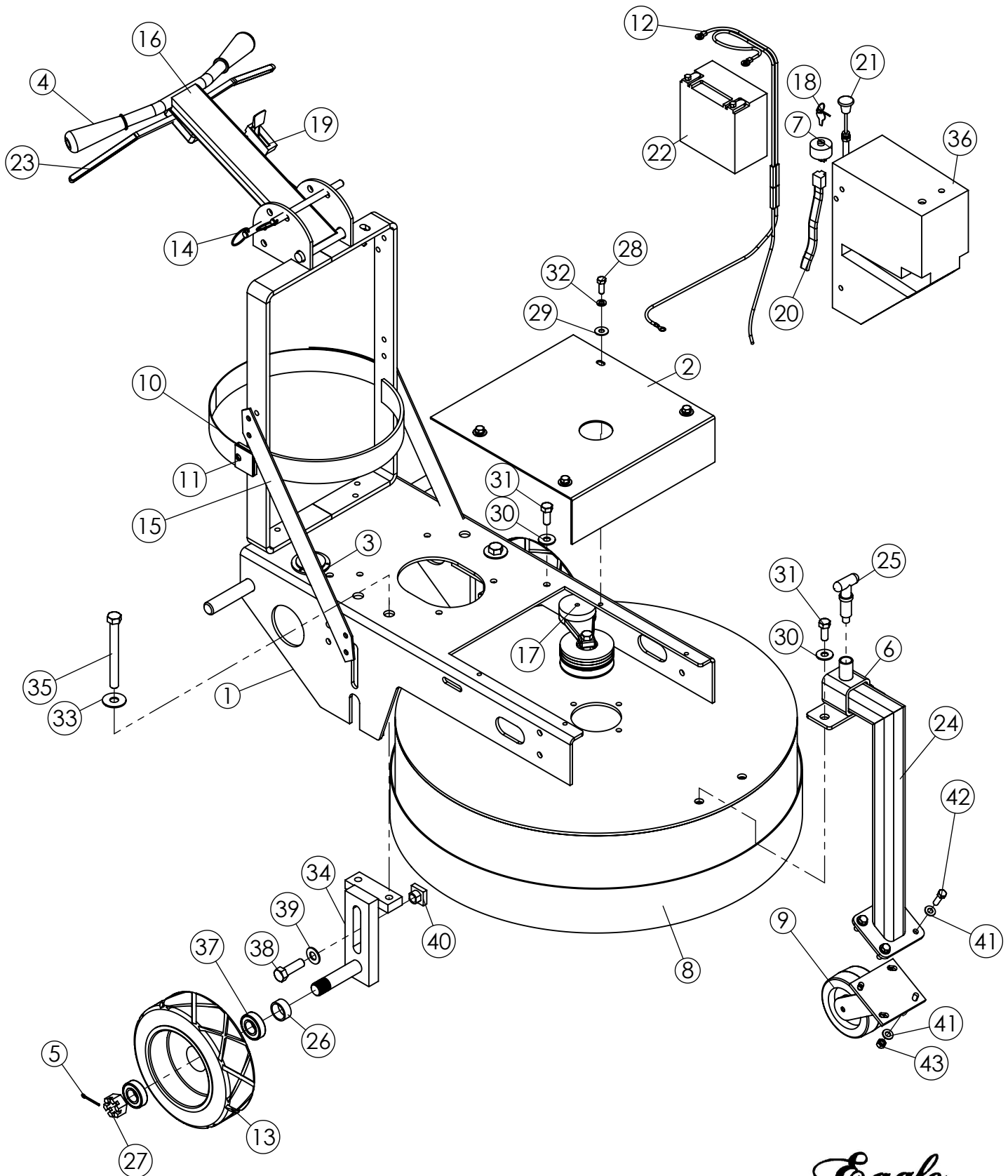
REJUVENATOR 3000

300294



Eagle
By Stonekor LLC

REJUVENATOR ENGINE DECK SUB ASSEMBLY



Eagle
By Stonekor LLC

REJUVENATOR ENGINE DECK SUB ASSEMBLY

ITEM NO.	PART NUMBER	DESCRIPTION	QTY.
1	200400	FRAME ROADRUNNER 2012	1
2	200401	FRONT COVER RR 2012	2
3	200111	HOUR METER	1
4	1010	HANDLE GRIP	2
5	200865	COTTER PIN	2
6	200170	TRANSPORT RECEIVER	1
7	300171	KEY SWITCH	1
8	200156	SPLASH GUARD	1
9	200172	TRANSPORT WHEEL	1
10	200389	TANK LP STRAP FABRIC AND VELCRO	1
11	200617	STRAP PLATE HANDLE VELCRO	1
12	680296	BATTERY CONNECTOR COMPLETE - KAWASAKI	1
13	680875	WHEEL ASSEMBLY 10" X 3.5"	2
14	681294	HANDLE LOCKING PIN	2
15	680121	HANDLE SUPPORT GUSSETT	2
16	300174	HANDLE	1
17	300181	TENSIONER ASSEMBLY WITH PULLEY 21 INCH AND SP 30	1
18	680082	REPLACEMENT KEY	1
19	680599	THROTTLE CABLE WITHOUT CHOKE	1
20	680223	WIRE HARNESS KAWASAKI	1
21	680255	CHOKE CABLE PUSH / PULL (KAWASAKI / ROBIN)	1
22	4002	BATTERY SM 12V	1
23	200130	KILL SWITCH ASSEMBLY GRINDER ONLY	1
24	200171	TRANSPORT WHEEL SUPPORT ARM	1
25	681078	QUICK PIN	1

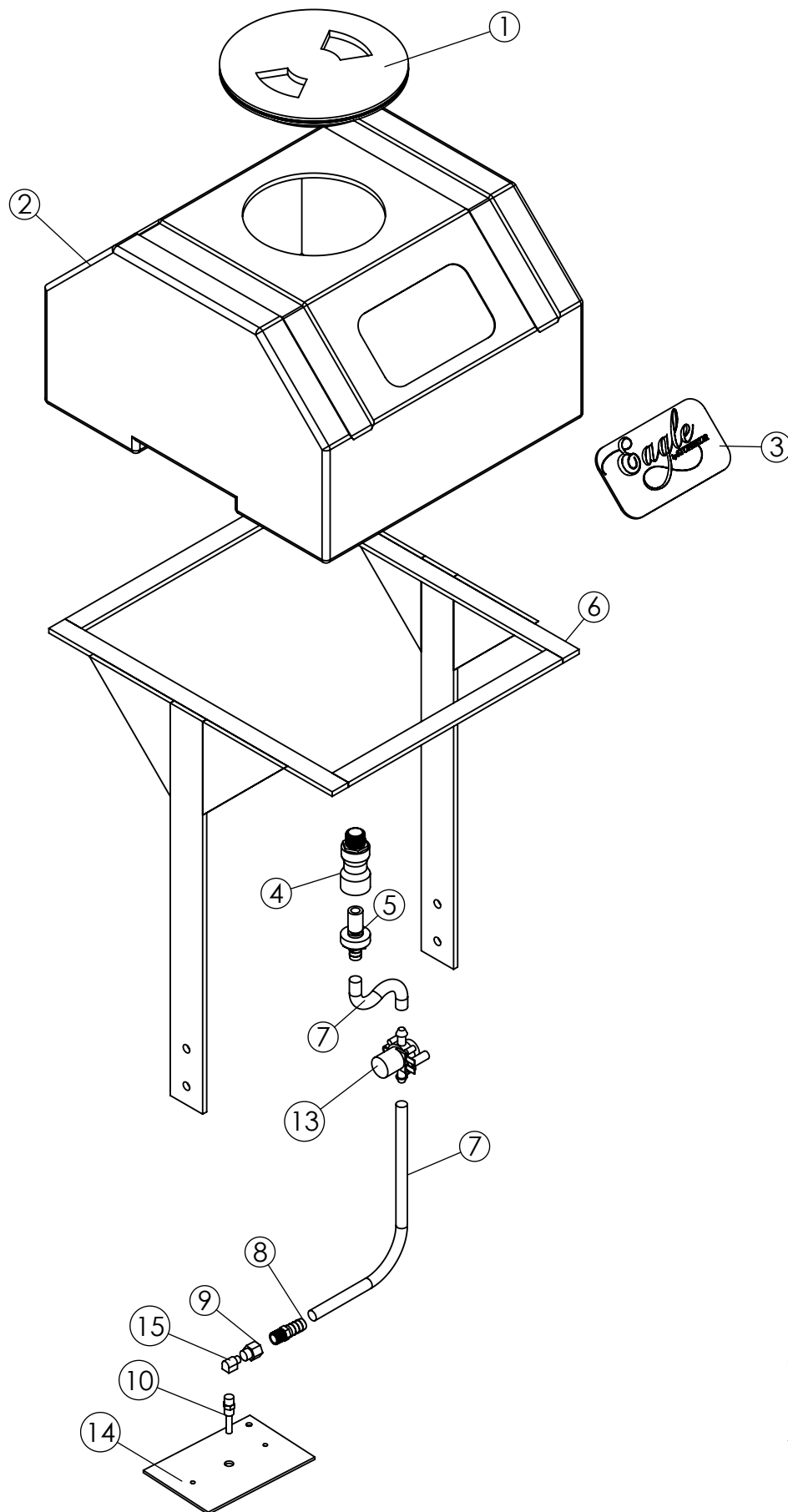

 By Stonekor LLC

REJUVENATOR ENGINE DECK SUB ASSEMBLY

ITEM NO.	PART NUMBER	DESCRIPTION	QTY.
20	300179	BATTERY BOX METAL	1
21	680082	REPLACEMENT KEY	1
22	680599	THROTTLE CABLE WITHOUT CHOKE	1
23	680223	WIRE HARNESS KAWASAKI	1
24	680255	CHOKE CABLE PUSH / PULL (KAWASAKI / ROBIN)	1
25	4002	BATTERY SM 12V	1
26	200130	KILL SWITCH ASSEMBLY GRINDER ONLY	1
27	200171	TRANSPORT WHEEL SUPPORT ARM	1
28	681078	QUICK PIN	1
29	680820	WHEEL SPACER	2
30	200864	NUT, HEX 1-14, SLOTTED	2
31	200806	1/2-13 X 1-1/2 HEX CAP SCREW	2
32	200800	3/8-16 x 1 Hex Cap Screw	4
33	200803	3/8 USS Flat Washer	4
34	200810	1/2-13 Grade C Grip Nut	2
35	200808	1/2 USS Flat Washer	3
36	200874	1/2-13 X 1-1/4 Hex Cap Screw	3
37	200888	3/8 Split Lock Washer Zinc	4

Eagle
By Stonekor LLC

REJUVENATOR WATER SYSTEM



Eagle
By Stonekor LLC

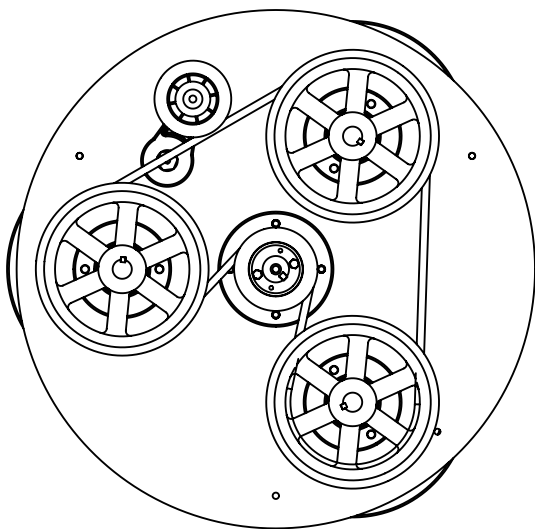
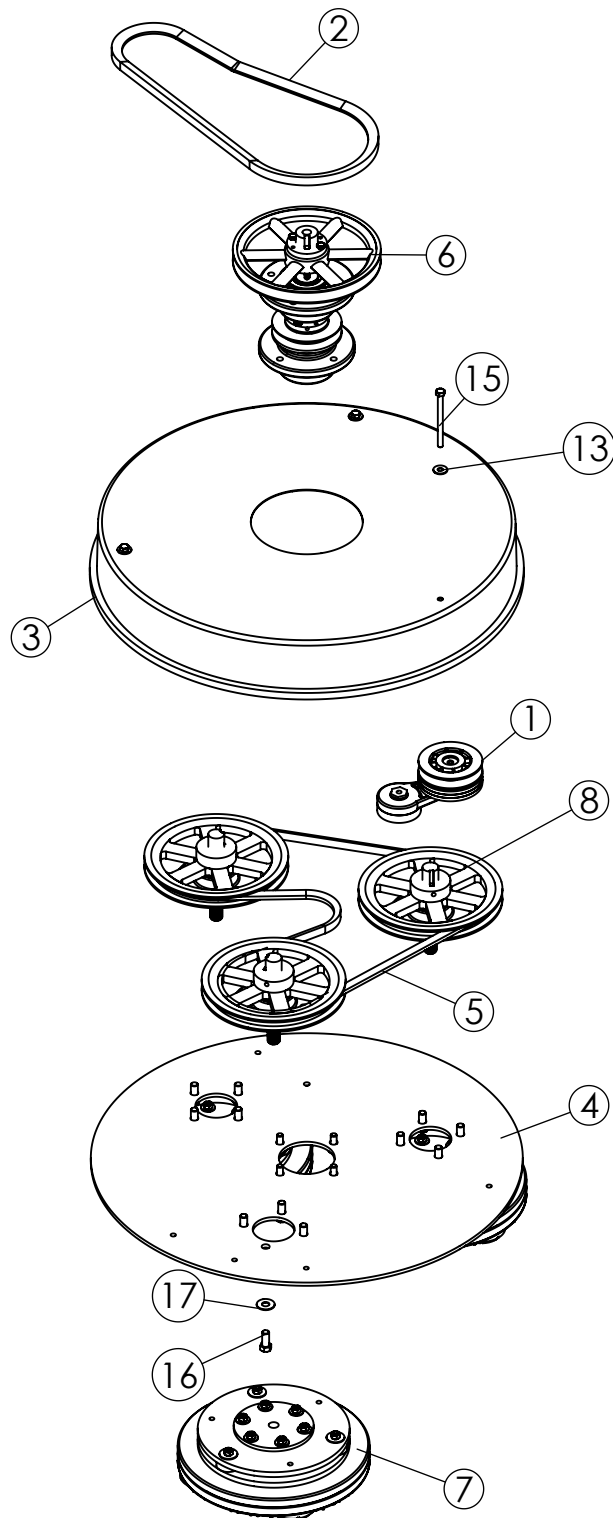
REJUVENATOR WATER SYSTEM

ITEM NO.	PART NUMBER	DESCRIPTION	QTY.
1	200445	CAP ASSEMBLY WATER TANK	1
2	200442	WATER TANK 2012	1
3	300178	DECAL	1
4	200446	QUICK COUPLING FEMALE	1
5	200447	QUICK COUPLING MALE	1
6	200443	WATER TANK BRACKET	1
7	200193	1/2" HOSE	1
8	200451	HOSE BARB 1/2" TO 1/4" PIPE	1
9	200452	1/4" FEMALE TO 1/8" PIPE	1
10	200453	COMPRESSION CONN	1
13	700164	ELECTRIC VALVE	1
14	300252	BATTERY BOX PLATE	1
15	200148	1/8 "L" PIPE THREADS	1

Eagle
By Stonekor LLC

REJUVENATOR DRIVE PLATE ASSEMBLY

Eagle
By Stonekor LLC



BELT ROUTING

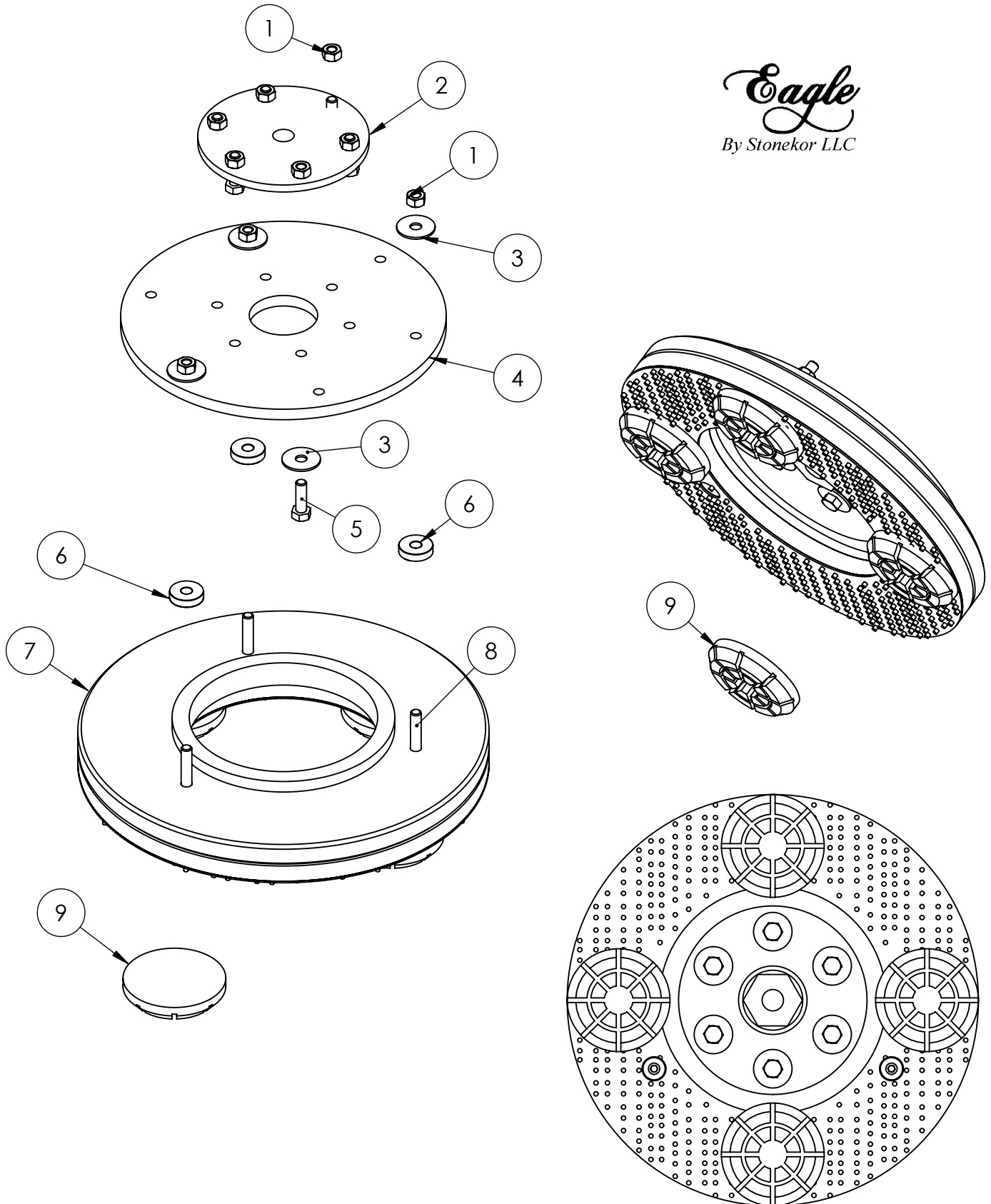
REJUVENATOR DRIVE PLATE ASSEMBLY

ITEM NO.	PART NUMBER	DESCRIPTION	QTY.
1	681549	DRIVE PLATE IDLER RR	1
2	200356	BELT BX-58	1
3	200393	DUST SHROUD REJUVENATOR	1
4	200402	DRIVE PLATE RR 2012	1
5	200379	BELT BB-81	2
6	200408	SHAFT INPUT 35mm ASSEMBLY RR 2012	1
7		REJUVENATOR PAD DRIVER ASSEMBLY	3
8	200409	SHAFT OUTPUT ASSEMBLY LEFT HAND RR 2012	3
9	200803	3/8 USS Flat Washer	4
10	200888	3/8 Split Lock Washer Zinc	4
11	200885	5/16 Split Lock Washer	3
12	200800	3/8-16 x 1 Hex Cap Screw	4
13	200870	5/16 USS Flat Washer Zinc	6
14	200822	5/16-18 Nylon Insert L/N	3
15	200837	5/16-18 x 4 Hex Cap Screw	3
16	200929	7/16-20 x 1 Hex Cap Screw	12
17	200946	7/16 NORD-LOCK WASHER	12

Eagle
By Stonekor LLC

REJUVENATOR PAD DRIVER ASSEMBLY

Eagle
By Stonekor LLC

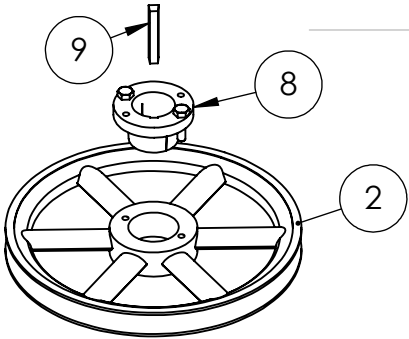


REJUVENATOR PAD DRIVER ASSEMBLY

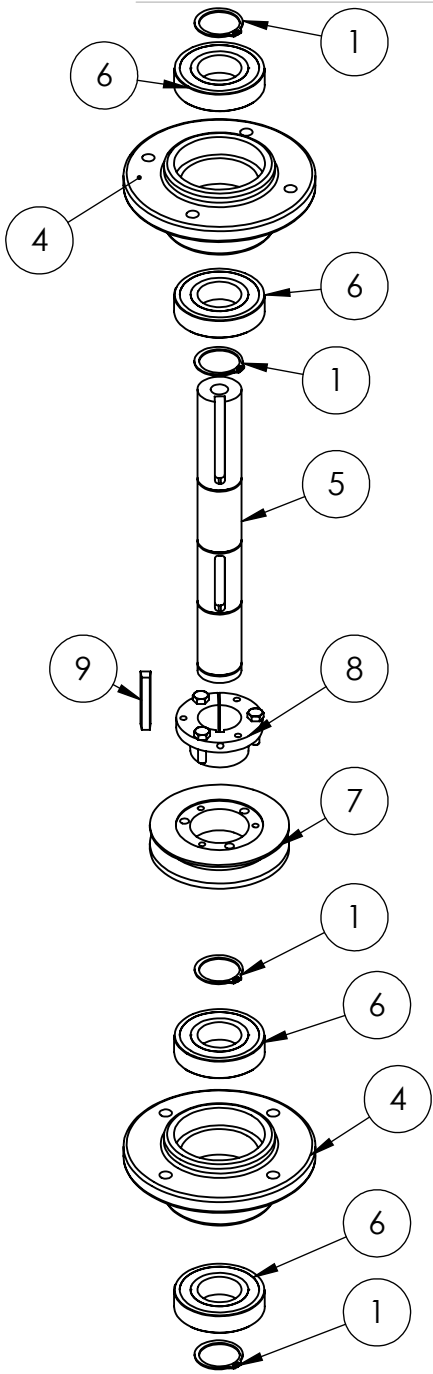
ITEM NO.	PART NUMBER	DESCRIPTION	QTY.
1	200822	5/16-18 Nylon Insert L/N	9
2	680658	FLANGE LEFT HAND RR	1
3	200829	5/16 x 1-1/2 Fender Washer	9
4	1415	RUBBER BISCUIT	1
5	200884	5/16-18 x 1 Hex Cap Screw Gr5 Zinc	6
6	680452	SPACER MUFFLER	3
7	200440	PAD HOLDER	1
8	200941	5/16-18 X 2 FHSCS	3
9		3" CONCRETE RESIN BOND PAD	4

Eagle
By Stonekor LLC

200408 SHAFT INPUT 35mm ASSEMBLY RR 2012



NOT PART OF 200408
ASSEMBLY



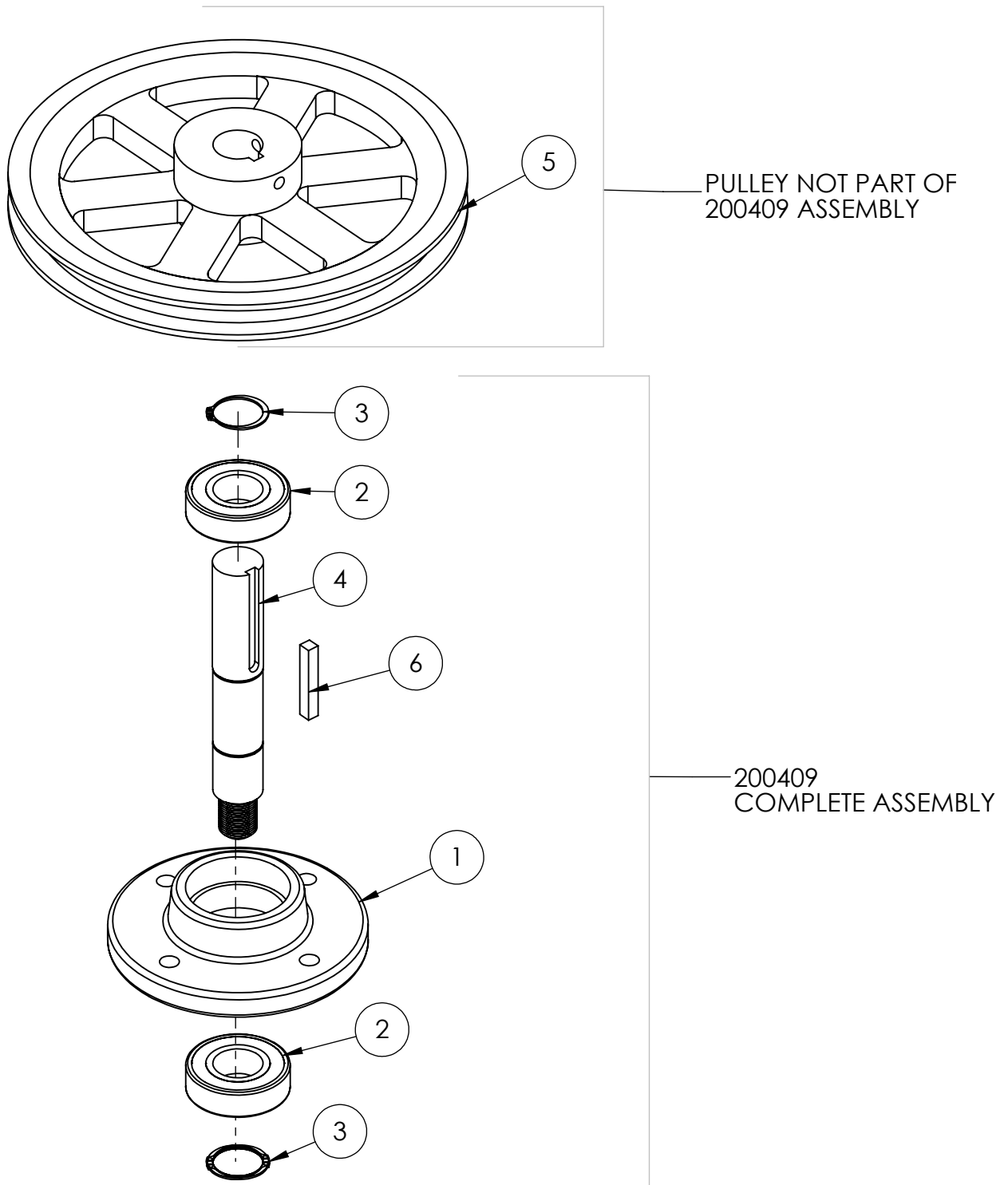
200408
COMPLETE ASSEMBLY

Eagle
By Stonekor LLC

200408 SHAFT INPUT 35mm ASSEMBLY RR 2012

ITEM NO.	PART NUMBER	DESCRIPTION	QTY.
1	200405	E-CLIP RETAINER RING	4
2	200414	PULLEY, 35 mm	1
8	200416	BUSHING 35 mm	1
4	200403	BEARING HOUSING EDGER FIXED HEAD & RR THREADED 7/16-20	2
5	200406	SHAFT INPUT 33mm RR 2012	1
6	200404	BEARING 207 PP	4
7	200412	PULLEY 4.0 QD	1
8	200413	BUSHING 35 mm RR 2012	1
9	200441	KEY 8 mm X 10 mm	2

Eagle
By Stonekor LLC

200409 SHAFT OUTPUT ASSEMBLY LEFT HAND RR 2012

Eagle
By Stonekor LLC

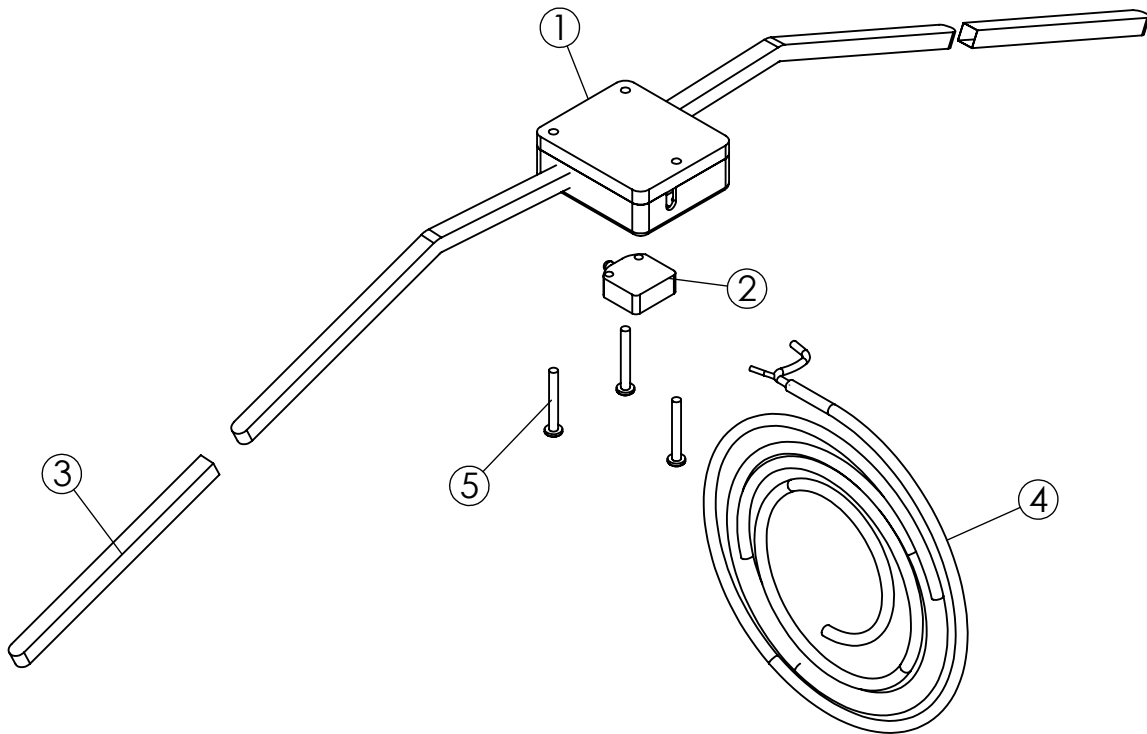
200409 SHAFT OUTPUT ASSEMBLY LEFT HAND RR 2012

ITEM NO.	PART NUMBER	DESCRIPTION	QTY.
1	1372	FRONT BEARING HOUSING ONLY	1
2	1380	SINGLE ROW BEARING-FRONT ASSEMBLY	2
3	1375	SNAP RINGS-FRONT BEARING ASSEMBLY	3
4	200407	SHAFT OUTPUT LEFT HAND RR 2012	1
5	300293	PULLEY, 9.0 X 1"	1
6		1/4 KEY STOCK	1

Eagle
By Stonekor LLC

REJUVENATOR WATER ON OFF SWITCH

Eagle
By Stonekor LLC

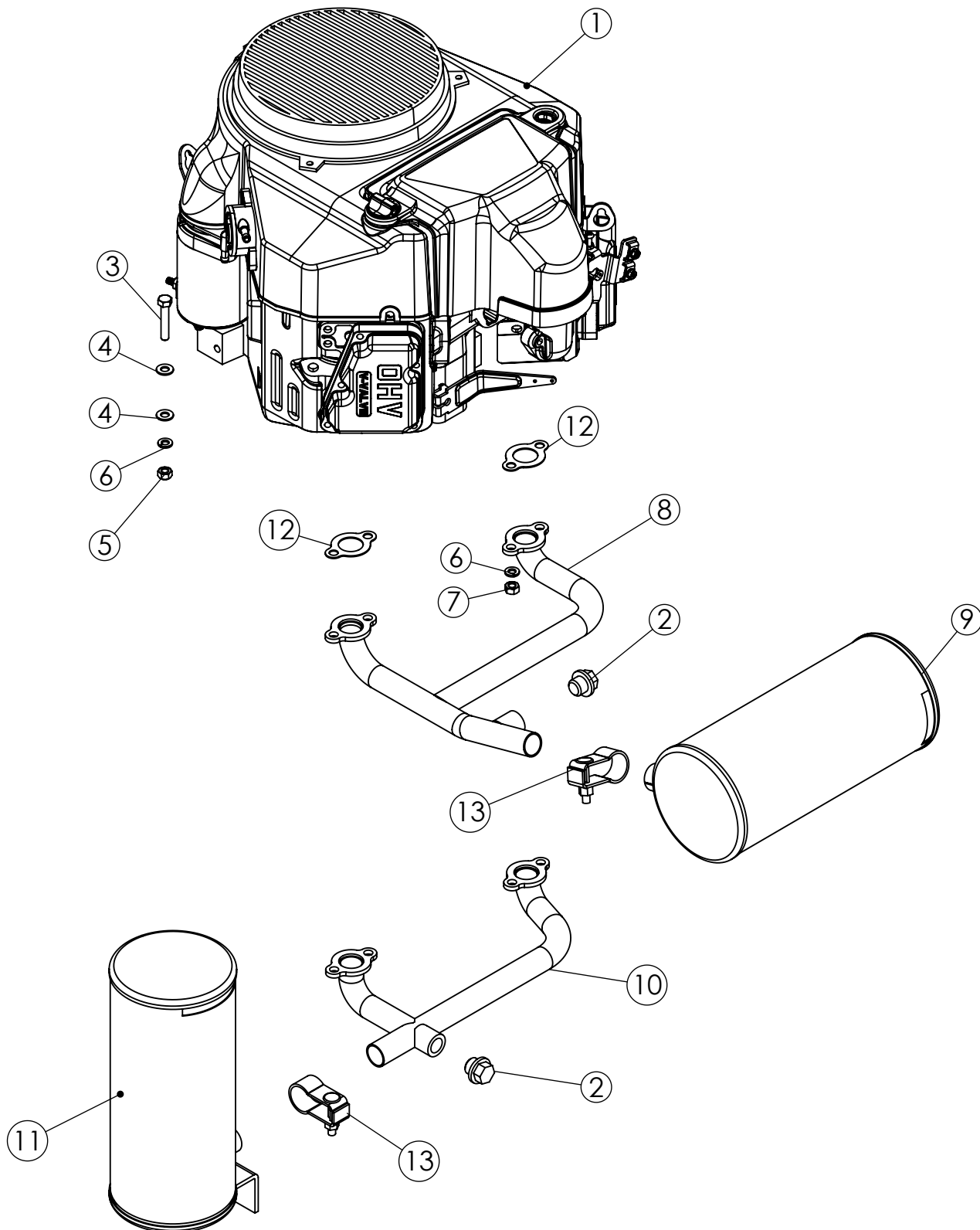


REJUVENATOR WATER ON OFF SWITCH

ITEM NO.	PART NUMBER	DESCRIPTION	QTY.
1	200103	KILL SWITCH HOUSING WITH ARMS ONLY	1
2	300163	SWITCH, KILL ONLY	1
3	200108	KILL SWITCH GRIPS	2
4	200106	KILL SWITCH CABLE	1
5	200915	10-32 x 1-1/2 Phillips Pan Head Machine Screw Zinc	3
.	200130	KILL SWITCH ASSEMBLY GRINDER ONLY COMPLETE	

Eagle
By Stonekor LLC

KAWASAKI FS-481-603 CC EXHAUST SYSTEM

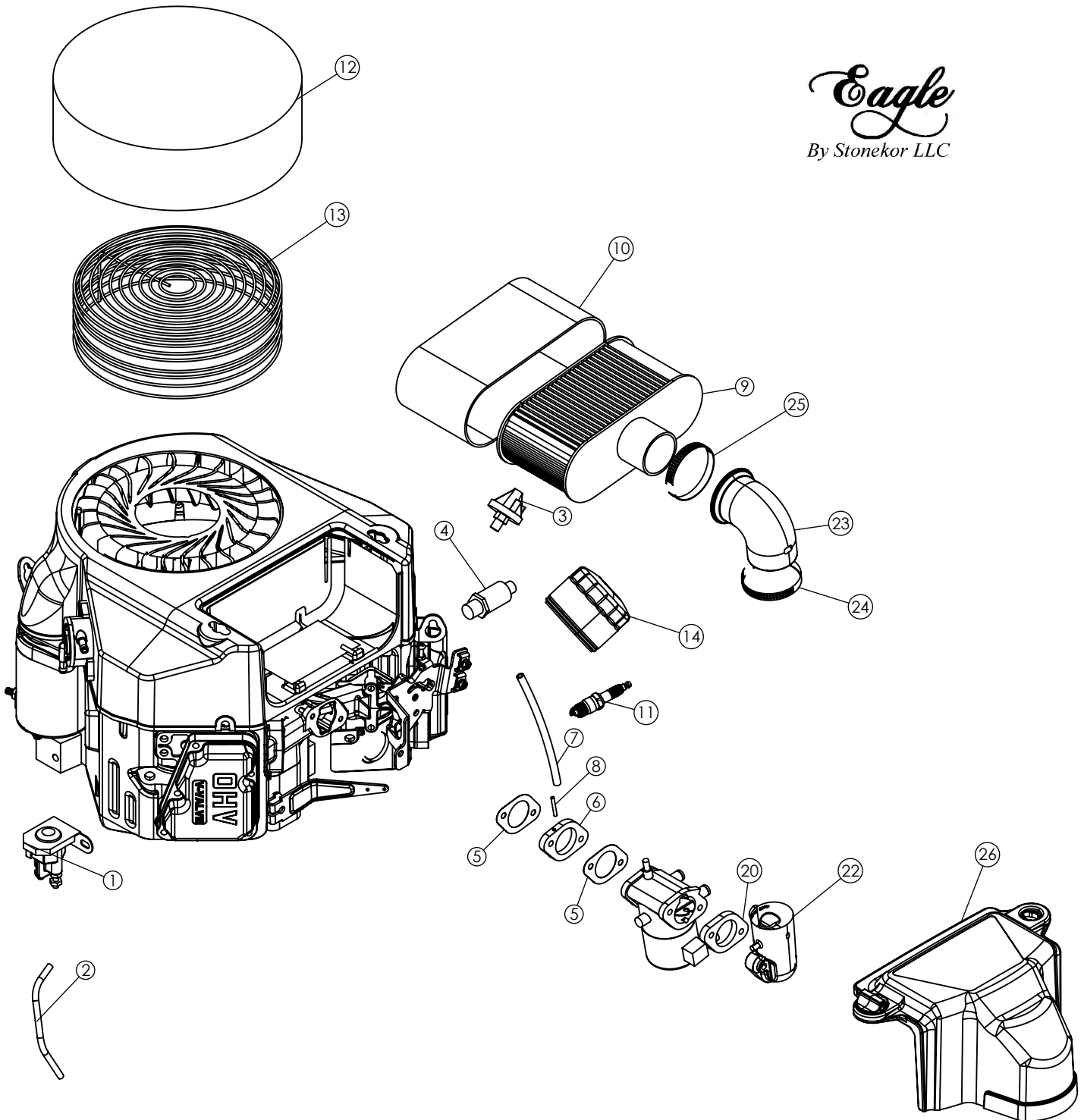


KAWASAKI FS-481-603 CC EXHAUST SYSTEM

ITEM NO.	PART NUMBER	DESCRIPTION	QTY.
1	300275	KAWASAKI ENGINE FS 481V W/O MUFFLER	1
2	680680	MANIFOLD BOLT PLUG	2
3	200858	5/16-18 x 1-3/4 Hex Cap Screw	4
4	200832	5/16 SAE Flat Washer	7
5	200822	5/16-18 Nylon Insert L/N	4
6	200885	5/16 Split Lock Washer	6
7	200905	8MM x 1.25 Hex Nut	4
8	300229	MANIFOLD HORIZONTAL FS 481 KAWASAKI NEW	1
9	300228	MUFFLER HORIZONTAL FS-481 KAWASAKI NEW	1
10	300233	MANIFOLD VERTICAL FS-481 KAWASAKI NEW	1
11	300232	MUFFLER VERTICAL FS-481 KAWASAKI NEW	1
12	W110607016	GASKET, MANIFOLD	2
13	300187	CLAMP MUFFLER ROBIN	2

KAWASAKI FS-481 603 CC ENGINE AND CARBURETOR

Eagle
By Stonekor LLC

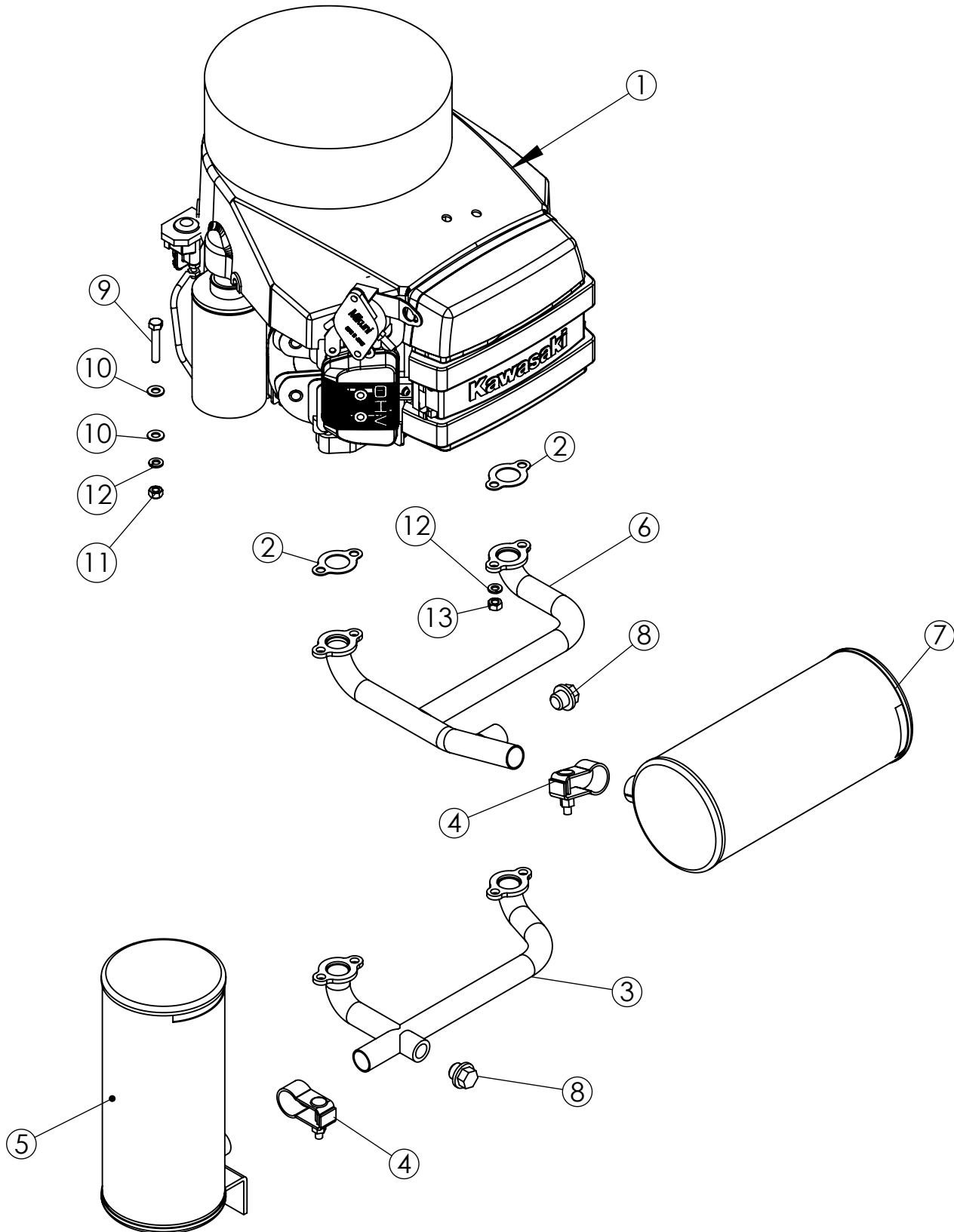


KAWASAKI FS-481 603 CC ENGINE AND CARBURETOR

ITEM NO.	PART NUMBER	DESCRIPTION	QTY.
1	680226	STARTER SOLENOID KAWASAKI	1
2	680298	STARTER TO SOLENOID WIRE	1
3	680222	OIL SWITCH	1
4	300202	VALVE OIL DRAIN	1
5	W110617004	GASKET AIR FILTER	2
6	W160737007	INSULATOR	1
7	1117	HOSE 3' VAC	1
8	1126	VENT TUBE	1
9	W999990384	ELEMENT AIR FILTER	1
10	W11013-7046	PRE CLEANER (KAWASAKI FS 481 V)	1
11	WBPR4ES	SPARK PLUG BPR4ES	1
12	680224	RECOIL FILTER- KAWASAKI	1
13	680225	RECOIL FILTER SUPPORT	1
14	W49065-7007	FILTER-OIL (KAWASAKI FS 481 V)	1
18	W999966051	CARBURETOR ASSEMBLY KAWASAKI 17 HP	1
19	1143	BRASS ELBOW 3/8 X 3/8 NPT	1
20	R26338001A3	SPACER	1
21	300297	CARB COMPLETE JD FS 481	1
22	W160607042	PIPE-INTAKE	1
23	W92192-7146	TUBE A/C	1
24	W92171-7010	CLAMP	1
25	W92173-7007	CLAMP	1
26	W110117064	CASE-AIR FILTER	1

Eagle
By Stonekor LLC

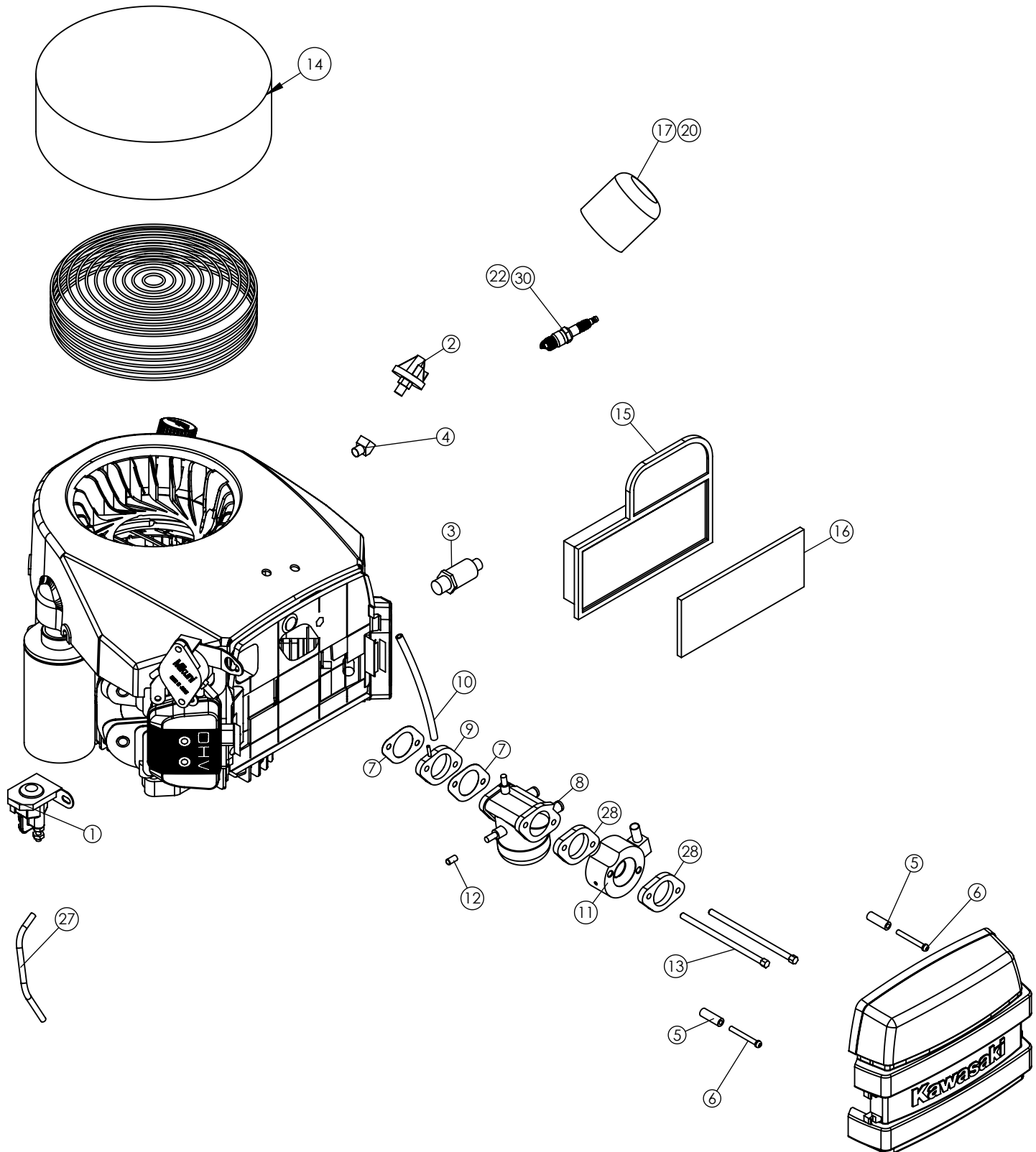
KAWASAKI FH-541-585 CC EXHAUST SYSTEM



KAWASAKI FH-541-585 CC EXHAUST SYSTEM

ITEM NO.	PART NUMBER	DESCRIPTION	QTY.
1	300149	KAWASAKI 17 HP COMPLETE W/O MUFFLER & MANIFOLD	1
2	W110607021	GASKET, MANIFOLD	2
3	300153	MANIFOLD KAWASAKI VERTICAL (680656)	1
4	300186	MUFFLER CLAMP KAWASAKI (680269)	2
5	300152	MUFFLER KAWASAKI VERTICAL (680268)	1
6	300151	MANIFOLD KAWASAKI HORIZONTAL	1
7	300150	MUFFLER KAWASAKI HORIZONTAL	1
8	680680	MANIFOLD BOLT PLUG	2
9	200858	5/16-18 x 1-3/4 Hex Cap Screw	4
10	200832	5/16 SAE Flat Washer	7
11	200822	5/16-18 Nylon Insert L/N	4
12	200885	5/16 Split Lock Washer	6
13	200905	8MM x 1.25 Hex Nut	4

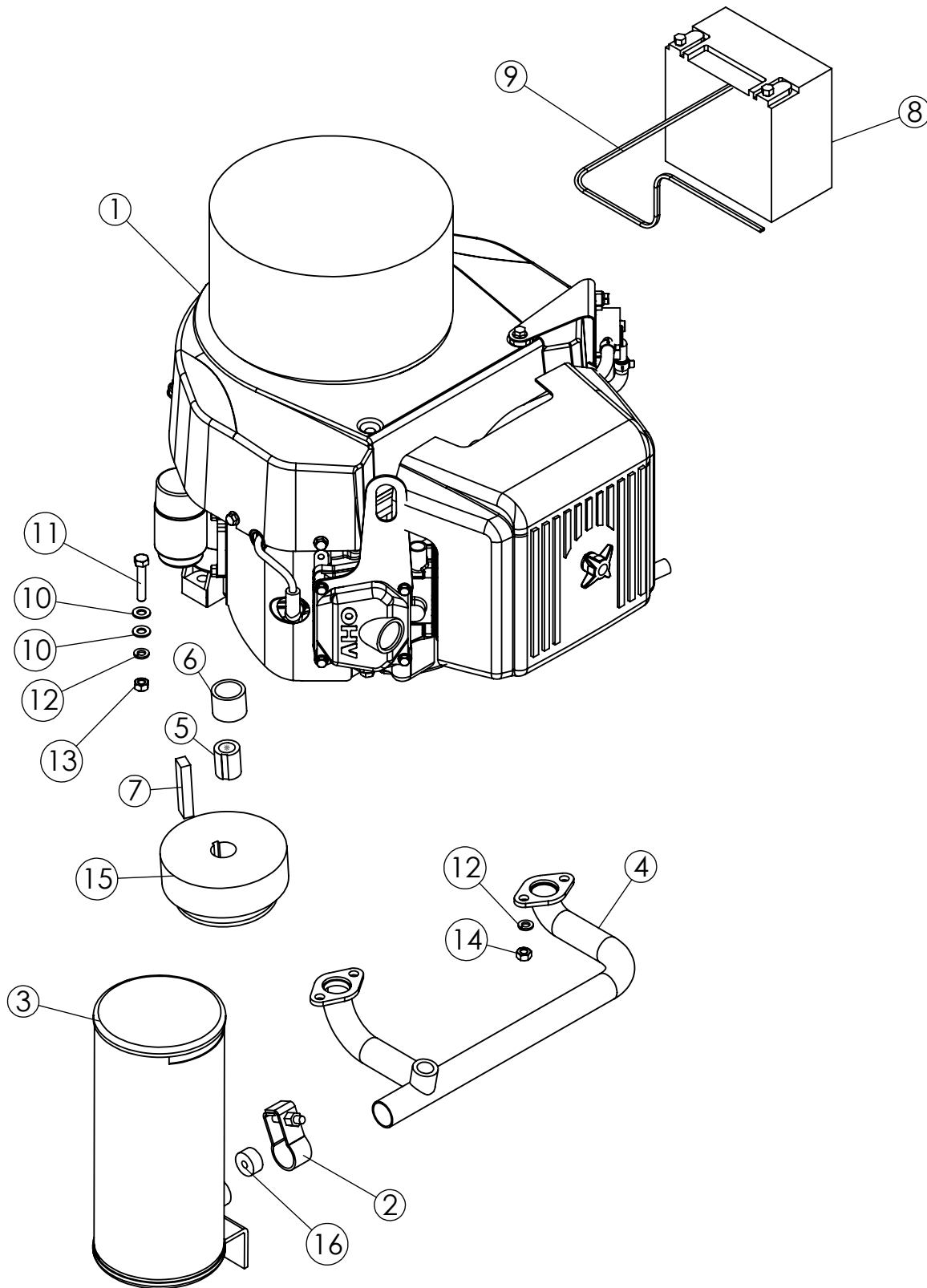
KAWASAKI FH-541-585 CC ENGINE AND CARBURETOR



KAWASAKI FH-541-585 CC ENGINE AND CARBURETOR

ITEM NO.	PART NUMBER	DESCRIPTION	QTY
1	680226	STARTER SOLENOID KAWASAKI	1
2	680222	OIL SWITCH	1
3	300202	VALVE OIL DRAIN	1
4	680088	SENDING UNIT ELBOW	1
5	680227	SPACER 1 1/8 KAWASAKI	2
6	680230	SCREW 10-32 X 1 3/4	2
7	W110617004	GASKET AIR FILTER	2
8		CARBURETOR ASSEMBLY ROBIN 22 HP	1
9	W160737007	INSULATOR	1
10	1117	HOSE 3' VAC	1
11	680236	FUEL LOAD BLOCK KAWASAKI	1
12	680235	RUBBER CAP 1/4-KAWASAKI	1
13	680229	STUD M6 X 130 KAWASAKI	2
14	680224	RECOIL FILTER- KAWASAKI	1
15	W11013-7001	AIR FILTER (KAWASAKI FH541 V)	1
16	W11013-7006	PRE CLEANER (KAWASAKI FH541 V)	1
17	W49065-7010	FILTER-OIL (KAWASAKI FH541 V)	1
18	W49065-7007	FILTER-OIL (KAWASAKI FS 481 V)	1
19	W92070-7004	PLUG, SPARK BPR4ES (NGK), SOLID (KAWASAKI FS 481 V)	2
27	680298	STARTER TO SOLENOID WIRE	1
28	R26338001A3	SPACER	2
29			1
30	WBPR4ES	SPARK PLUG BPR4ES	1

ROBIN 22 HP EXHAUST SYSTEM LX-30



Eagle
By Stonekor LLC

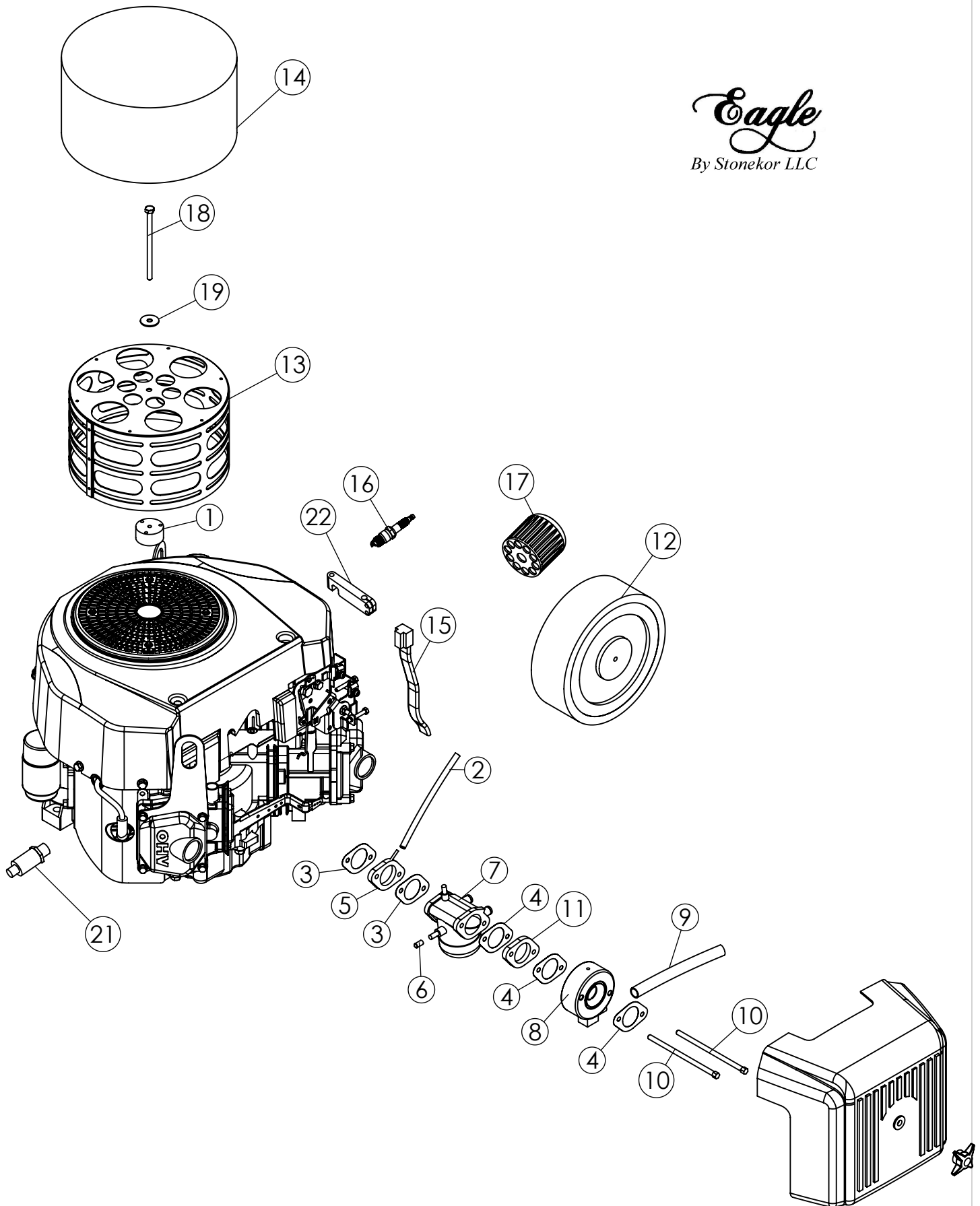
ROBIN 22 HP EXHAUST SYSTEM LX-30

ITEM NO.	PART NUMBER	DESCRIPTION	QTY.
1	300146	ROBIN 22 HP COMPLETE WITHOUT MUFFLER	1
2	300187	CLAMP MUFFLER ROBIN	1
3	300147	VERTICAL MUFFLER	1
4	300148	MANIFOLD ROBIN VERTICAL	1
5	200154	SHAFT EXTENSION ROBIN	1
6	200146	SPACER, CLUTCH	1
7	200155	KEY STOCK	1
8	4002	BATTERY SM 12V	1
9	200124	BATTERY CABLE ASSY	1
10	200832	5/16 SAE Flat Washer	7
11	200858	5/16-18 x 1-3/4 Hex Cap Screw	4
12	200885	5/16 Split Lock Washer	6
13	200822	5/16-18 Nylon Insert L/N	4
14	200905	8MM x 1.25 Hex Nut	4
15	680956	CENTRIFUGAL CLUTCH	1
16	680266	ALUM MUFFLER SPACER 1/2 X 1 X 5/16 HOLE	1

Eagle
By Stonekor LLC

ROBIN 22 HP ENGINE AND CARBURETOR

Eagle
By Stonekor LLC

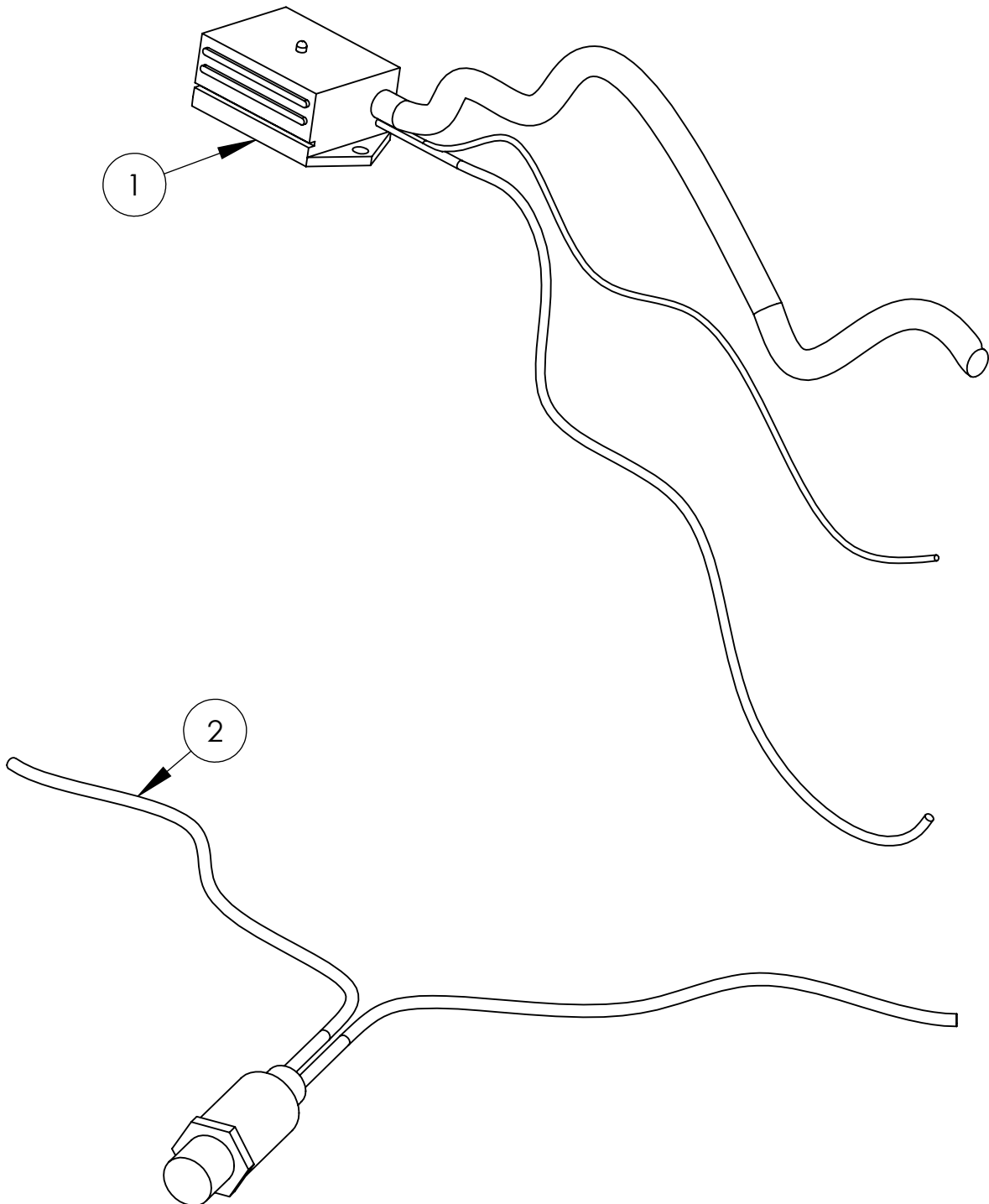


ROBIN 22 HP ENGINE AND CARBURETOR

ITEM NO.	PART NUMBER	DESCRIPTION	QTY.
1	200128	RECOIL SUPPORT FOR STUD	1
2	1117	HOSE 3' VAC	1
3	R26335501A3	INSULATOR GASKET	2
4	R26335502A3	AIR CLEANER GASKET	3
5	R26335401A3	INSULATOR WITH VACUUM TUBE	1
6	680235	RUBBER CAP 1/4-KAWASAKI	1
7		CARBURETOR ASSEMBLY ROBIN 22 HP	1
8	680553	ROBIN 22 HP FUEL LOAD BLOCK	1
9	1118	HOSE 3' FUEL	1
10	680229	STUD M6 X 130 KAWASAKI	2
11	R26338001A3	SPACER	1
12	R26332610A1	AIR CLEANER WITH FOAM PRE FILTER	1
13	300203	FILTER SUPPORT SCREEN ROBIN	1
14	680509	RECOIL FILTER ROBIN	1
15	R263-73123-A1	WIRE HARNESS SK SERIES GRINDERS ONLY	1
16	RX650140730	BPR4EY SPARK PLUG	1
17	R2486580100	OIL FILTER AY	1
18	200876	1/4-20 X 4 1/2 Hex Cap Screw	1
19	200828	1/4 x 1 fender Washer	1

Eagle
By Stonekor LLC

EMISSION SHUT DOWN

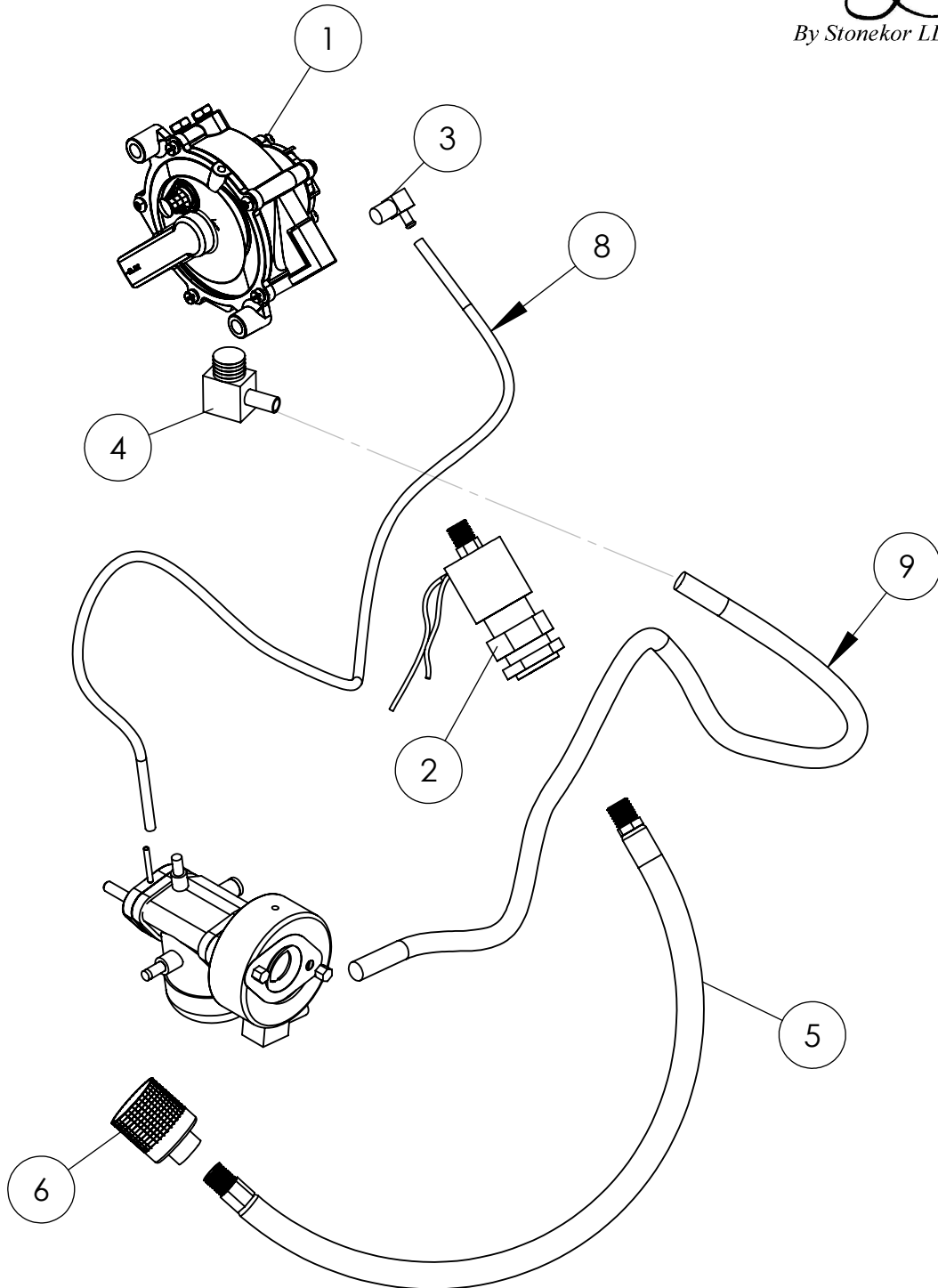


EMISSION SHUT DOWN

ITEM NO.	PART NUMBER	DESCRIPTION	QTY.
1	300142	EMISSION SHUT DOWN COMPLETE	1
2	300169	OXYGEN SENSOR ONLY	1
.	300139	EMISSION SHUT DOWN COMPLETE	1

REGULATOR ELECTRIC LOCK FITTING HOSE COUPLER

Eagle
By Stonekor LLC

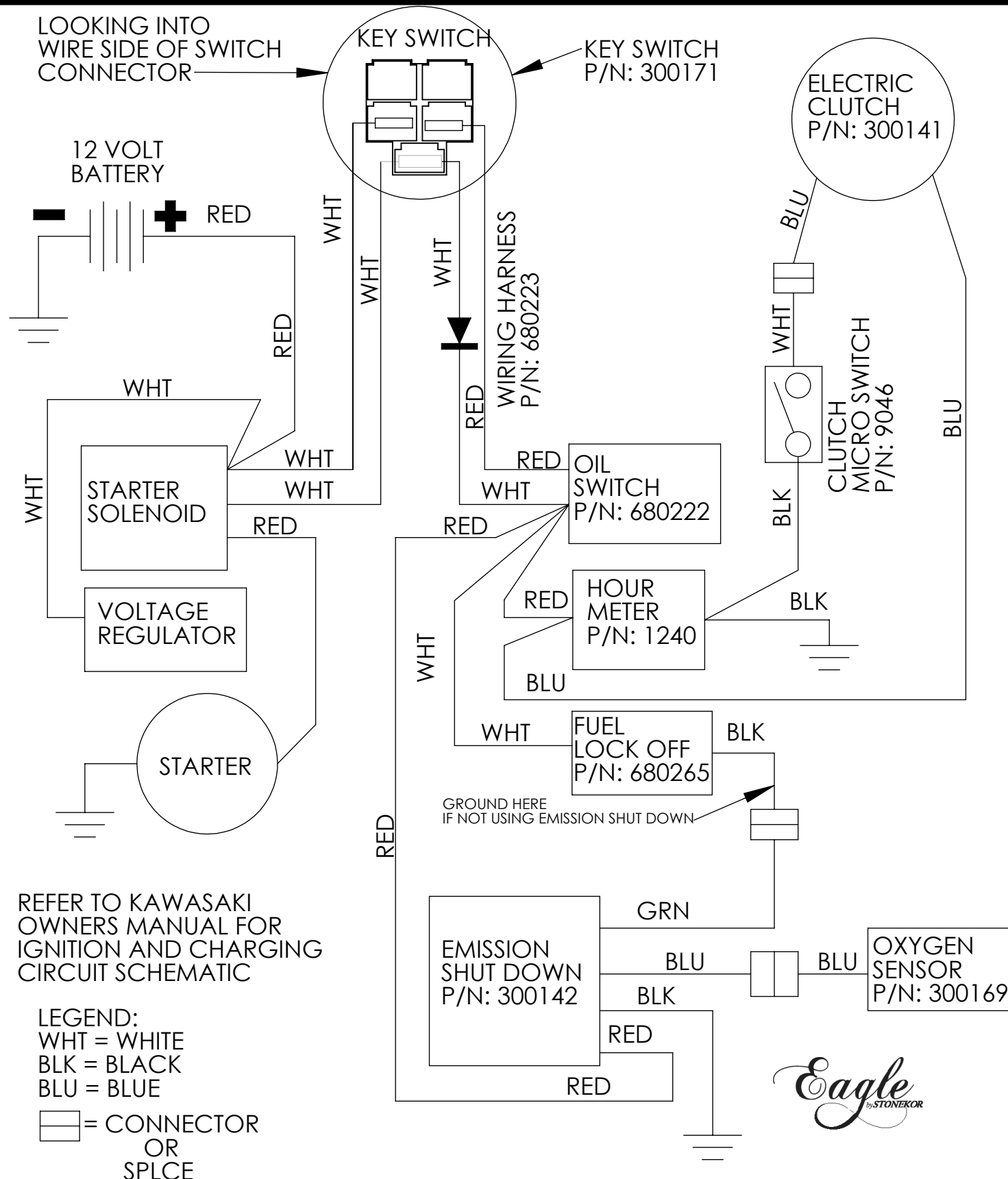


REGULATOR ELECTRIC LOCK FITTING HOSE COUPLER

ITEM NO.	PART NUMBER	DESCRIPTION	QTY.
1	680350	REGULATOR FOR KAWASAKI & ROBIN	1
2	680265	FUEL LOCK WITH FILTER	1
3	1144	1/8 MALE PIPE X 3/16 HOSE BARB X 90	1
4	1143	BRASS ELBOW 3/8 X 3/8 NPT	1
5	1124	HOSE, LP TANK TO REGULATOR	1
6	1155	QUICK COUPLING	1
8	1117	HOSE, 3' VAC	1
9	1118	HOSE, 3' FUEL	1
.	300160	REGULATOR ELECT. LOCK FITTING COMPLETE	

Eagle
By Stonekor LLC

WIRE HARNESS SCHEMATIC KAWASAKI 17 HP SIGNATURE SERIES AND DUST CONTROL WITH OPTIONAL ELECTRIC CLUTCH AND EMISSION SHUT DOWN



WIRE HARNESS SCHEMATIC ROBIN 22 HP SIGNATURE SERIES AND DUST CONTROL WITH OPTIONAL ELECTRIC CLUTCH AND EMISSION SHUT DOWN

