

## ProTeam Super QuarterVac®

107118\* Super QuarterVac w/  
Xover Telescoping Wand Tool Kit D (107100)

**\$555**

The smaller yet equally powerful sibling of the Super CoachVac backpack vacuum, is versatile enough for any sized cleaning professional. The quality built Super QuarterVac is a formidable tool for battling poor Indoor Air Quality.



**EASY TO USE**



**SUSTAINABLE**



**PRODUCTIVE**

### Specifications

Weight:	10 lbs./4.5 kg
Motor Airflow:	150 CFM
Static Lift:	100 in.
Motor:	1188 W/9.9 A
Decibel:	67 dBA
Capacity:	6 qt./6.6 L
ProLevel Filtration® w/Four Levels of Filtration:	729 sq. in. total area

### \*\*ProLevel Filtration System with HEPA Media

captures 99.33% at 0.3-.5 microns per ASTM F3150

### Warranty

3 years parts, labor and motor on vacuum

Limited lifetime on molded body parts

*\*\*The filtration value of ProTeam's ProLevel Filtration System in this vacuum is achieved by the use of a multi-stage filtration system, including intercept micro filter, micro cloth filter, plastic cage with foam filter made from HEPA media, and post-motor filter, as tested per ASTM F3150.*

### \*STANDARD CONFIGURATION

14" Xover Floor Tool	3" Dust Brush
Telescoping Wand	17" Crevice Tool
5" Upholstery Tool	

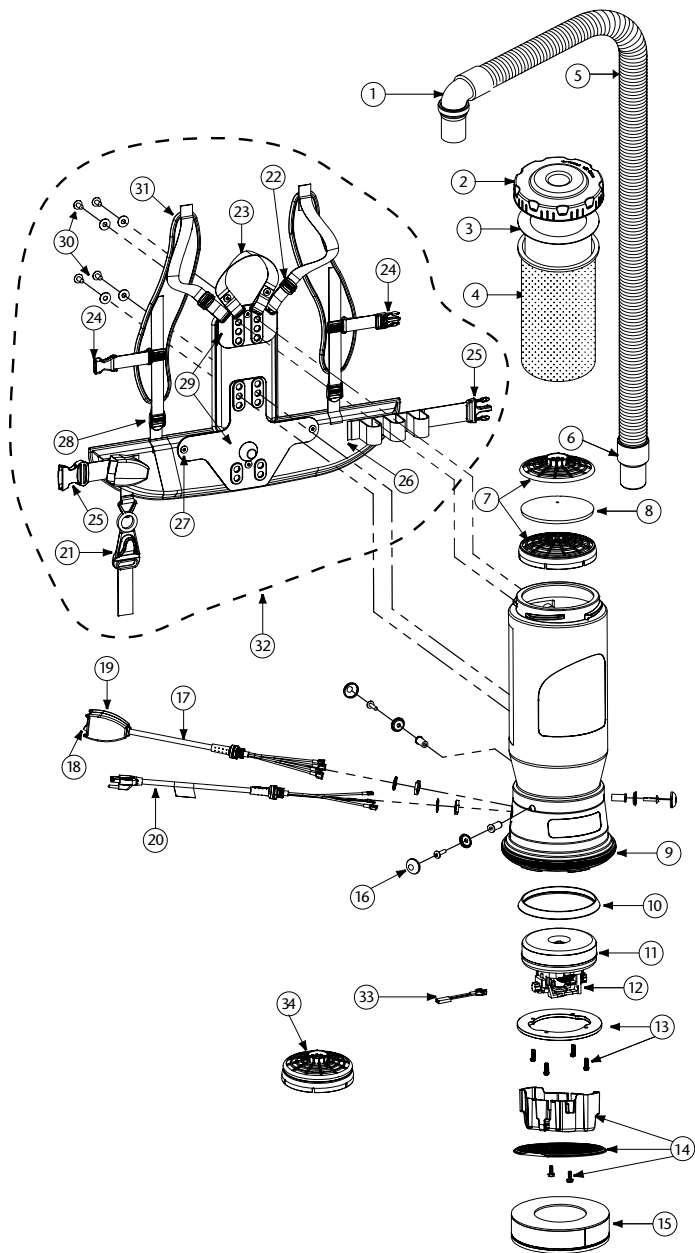
### RELATED PRODUCTS

100431	Intercept Micro Filters, 10/pk (open collar)	\$15.60
106995	Intercept Micro Filters, 10/pk (closed collar)	26.76

### OPTIONAL CONFIGURATIONS

107103	w/Xover® Performance Two-Piece Wand Tool Kit A (107097)	\$555
107108	w/Xover Two-Piece Wand Tool Kit B (107098)	555
107113	w/Xover Performance Telescoping Wand Tool Kit C (107099)	555
107605	w/ProBlade® Carpet Floor Tool Kit (107530)	555
107606	w/ProBlade Hard Surface Floor Tool Kit (107531)	565
107607	w/ProBlade Carpet and Hard Surface Floor Tool Kit (107532)	605

Specification calculations are based on average motor performance.



No.	Product Name	Qty	List Price
1 101928	Replacement Double Swivel Elbow Cuff (Black) 1 1/2"	1 ea.	\$ 9.60
2 106073	Twist Cap (Purple)	1 ea.	30.58
3 100431	Intercept Micro Filter	10/pk	15.60
4 100564	Micro Cloth Filter	1 ea.	25.92
5 107648	48" Static-Dissipating Hose w/ Non-Replaceable Cuffs	1 ea.	29.04
6 100694	Replacement Swivel Cuff (Black) 1 1/2"	1 ea.	5.71
7 100030	Dome Filter w/Foam Media (includes: #8)	1 ea.	8.35
8 100343	Foam Filter Media for Dome Filter	1 ea.	1.91
101220	High Filtration Disk (optional)	2/pk	11.23
9 100586	Bottom Bumper	1 set	7.65
10 100014	Motor Gasket	1 ea.	12.52
11 105162	Motor/Fan (120 V) w/Crimps	1 ea.	125.12
100379	Motor Ground Wire Clamp Set w/Screws	1 set	6.25
100380	Motor Crimp Set: 4 Female, 4 Male, Ground Crimp Connector	1 set	11.12
12 105164	Carbon Brush Set (Domel)	1 set	22.24
101720	Carbon Brush Set (Ametek)	1 set	22.24
13 100335	Motor Compression Ring w/Screws	1 set	13.36
100378	Compression Ring Screws: 4 Screws	1 set	3.13
14 105044	Motor Shroud/Diffuser w/Screw Set: 2 Screws	1 set	23.83
15 105800	Sound Muffler	1 ea.	30.71
16 100368	Motor Mounting System Set: 3 Well Nuts, 3 Bolts, 3 Washers, 3 Covers	1 set	13.90
17 101610	Switch Cord Assembly (includes: #18, 19)	1 set	38.93
101714	Switch Cord w/Crimps	1 set	17.26
18 106066	On/Off Switch (must use with #106287)	1 ea.	7.57
19 101472	Switch Box w/Velcro and New Lamb Switch	1 set	25.02
106287	Switch Box w/Velcro and Screws	1 ea.	18.67
20 100641	Power Cord Assembly	1 set	20.17
21 102604	Cord Holder	1 ea.	9.30
22 100358	Shoulder Strap Plastic Adjustment Buckle (Top)	1 ea.	1.05
23 101737	Carry Handle w/Rivet and Washer Set	1 set	9.05
24 103627	Sternum Strap Buckles (Latch and Keeper)	1 set	2.23
25 106719	Waist Belt Keeper and Latch	1 set	12.60
26 100359	Waist Belt (includes: #25)	1 set	41.70
27 100375	Barrel Nut Connection Set for Backplate (Replacement)	1 set	6.25
28 100357	Shoulder Strap Plastic Adjustment Buckle (Bottom)	1 ea.	1.05
29 105046	Backplate (includes: #27)	1 set	27.81
30 100716	Backplate (Black) Connection Set: 4 Screws w/Washers	1 set	13.90
31 100356	Shoulder Strap Assembly (includes: #22, 24, 28)	1 set	18.07
100354	Strap Assembly Complete (includes: #26, 31)	1 set	55.62
32 103166	Backplate System Complete (includes: #21-31)	1 set	69.51
33 107294	Thermal Protector	1 ea.	15.25
34 106526	Dome Filter made from HEPA Media	1 ea.	14.20
101678	50' Extension Cord (Not Shown)	1 ea.	35.62