

ProTeam Super CoachVac®

107119* Super CoachVac w/
Xover Telescoping Wand Tool Kit D (107100)

The Super CoachVac is a basic backpack vacuum designed to tackle high square footage areas. Multiple floor tool kit options available to tackle hard surface or carpet.



LARGE CAPACITY



EASY MAINTENANCE



TIME SAVINGS

Specifications

Weight:	11 lbs./4.99 kg
Motor Airflow:	150 CFM
Static Lift:	100 in.
Motor:	1188 W/9.9 A
Decibel:	66 dBA
Capacity:	10 qt./11 L
ProLevel Filtration® w/Four Levels of Filtration:	1190 sq. in. total area

**ProLevel Filtration System with HEPA Media

captures 99.67% at 0.3-.5 microns per ASTM F3150

Warranty

3 years parts, labor and motor on vacuum

Limited lifetime on molded body parts

***The filtration value of ProTeam's ProLevel Filtration System in this vacuum is achieved by the use of a multi-stage filtration system, including intercept micro filter, micro cloth filter, plastic cage with foam filter made from HEPA media, and post-motor filter, as tested per ASTM F3150.*

*STANDARD CONFIGURATION

14" Xover Floor Tool	3" Dust Brush
Telescoping Wand	17" Crevice Tool
5" Upholstery Tool	

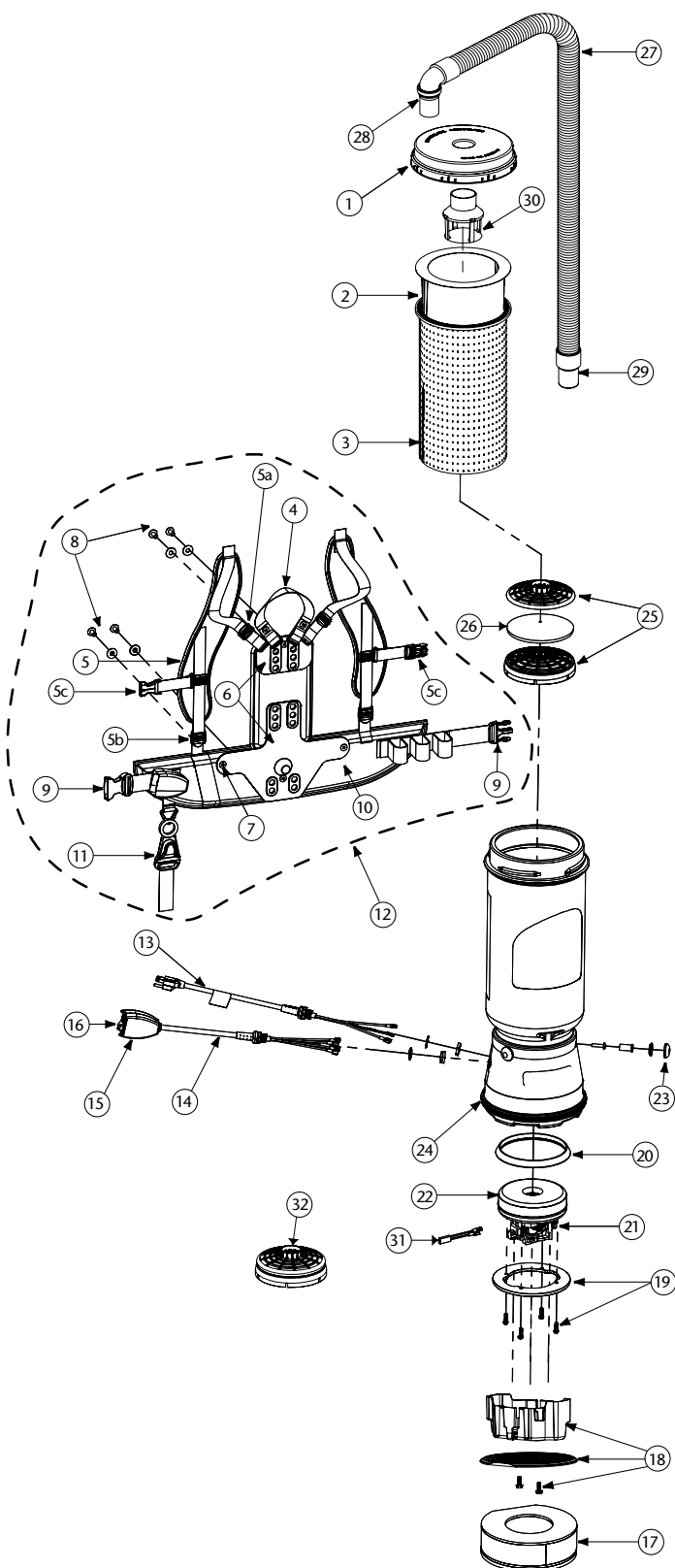
RELATED PRODUCTS

100331	Intercept Micro Filters, 10/pk (open collar)	\$20.80
100291	Intercept Micro Filters, 10/pk (closed collar)	31.10

OPTIONAL CONFIGURATIONS

107104	w/Xover® Performance Two-Piece Wand Tool Kit A (107097)	\$560
107109	w/Xover Two-Piece Wand Tool Kit B (107098)	560
107114	w/Xover Performance Telescoping Wand Tool Kit C (107099)	560
107602	w/ProBlade® Carpet Floor Tool Kit (107530)	560
107603	w/ProBlade Hard Surface Floor Tool Kit (107531)	570
107604	w/ProBlade Carpet and Hard Surface Floor Tool Kit (107532)	610

Specification calculations are based on average motor performance.



No.	Product Name	Qty	List Price
1	100197 Twist Cap (Purple)	1 ea.	\$ 36.15
2	100331 Intercept Micro Filter	10/pk	20.80
3	100565 Micro Cloth Filter	1 ea.	31.38
4	101737 Carry Handle w/Rivet and Washer Set	1 set	9.05
5	100356 Shoulder Strap Assembly (includes: #5a, 5b, 5c)	1 set	18.07
	100354 Strap Assembly Complete (includes: #5, 10)	1 set	55.62
5a	100358 Shoulder Strap Plastic Adjustment Buckle (Top)	1 ea.	1.05
5b	100357 Shoulder Strap Plastic Adjustment Buckle (Bottom)	1 ea.	1.05
5c	103627 Sternum Strap Buckles (Latch and Keeper)	1 set	2.23
6	105046 Backplate (includes: #7)	1 ea.	27.81
7	100375 Barrel Nut Connection Set for Backplate (Replacement)	1 set	6.25
8	100716 Backplate (Black) Connection Set: 4 Screws w/Washers	1 set	13.90
9	106719 Waist Belt Keeper and Latch	1 ea.	12.60
10	100359 Waist Belt (includes: #9)	1 ea.	41.70
11	102604 Cord Holder	1 ea.	9.30
12	103166 Backplate (Black) System Complete (includes: #4-11)	1 set	69.51
13	100641 Power Cord Assembly	1 set	20.17
14	101610 Switch Cord Assembly (includes: #15, 16)	1 set	38.93
15	101714 Switch Cord w/Crimps	1 ea.	17.26
16	101472 Switch Box w/Velcro and New Lamb Switch	1 set	25.02
17	106066 On/Off Switch (must use with #106287)	1 ea.	7.57
18	106287 Switch Box w/Velcro and Screws	1 ea.	18.67
19	100597 Sound Muffler	1 ea.	30.71
20	105044 Motor Shroud/Diffuser w/Screw Set: 2 Screws	1 set	23.83
21	100335 Motor Compression Ring w/Screws	1 set	13.36
22	100378 Compression Ring Screw Set: 4 Screws	1 set	3.13
23	100014 Motor Gasket	1 ea.	12.52
24	105164 Carbon Brush Set (Domel Motor)	1 set	22.24
25	101720 Carbon Brush Set (Ametek Motor)	1 set	22.24
26	105162 Motor/Fan (120 V) w/Crimps	1 ea.	125.12
27	100379 Motor Ground and Wire Clamp Set w/Screws	1 set	6.25
28	100380 Motor Crimp Set: 4 Female, 4 Male, Ground Crimp Connector	1 set	11.12
29	100368 Motor Mounting System Set: 3 Well Nuts, 3 Bolts, 3 Washers, 3 Covers	1 set	13.90
30	100586 Bottom Bumper	1 ea.	7.65
31	100030 Dome Filter w/Foam Media (includes: #26)	1 ea.	8.35
32	100343 Foam Filter Media for Dome Filter	1 ea.	1.91
33	101220 High Filtration Disk (optional)	2/pk	11.23
34	107648 48" Static-Dissipating Hose w/ Non-Replaceable Cuffs	1 ea.	29.04
35	101928 Replacement Double Swivel Elbow Cuff (Black)	1 ea.	9.60
36	100694 Replacement Swivel Cuff (Black) 1 1/2"	1 ea.	5.71
37	101543 Filter Guard (Optional)	1 ea.	10.04
38	107294 Thermal Protector	1 ea.	15.25
39	106526 Dome Filter made from HEPA Media	1 ea.	14.20
40	101678 50' Extension Cord (Not Shown)	1 ea.	35.62