



NSS Enterprises, Inc.

## HIGH SPEED FLOOR BURNISHER

# MUSTANG 1500

For fast burnishing with exceptional results, the Mustang 1500 is an outstanding value in high speed floor care. Operating at 1500 RPM, the Mustang 1500 delivers high-gloss 'wet-look' shine at an economical price.

- Smooth operation. The flexible, built-in pad driver enables smooth, balanced and safe operation.
- Easy transportation. The built-in wheel carriage allows easy transport to the work site and on stairs.
- Safety lock-out. The mechanical lock-out switch on the Mustang 1500 prevents accidental starts.
- Optional dust filter version. The Mustang 1500 with Vac-Trac™ Dust Control System captures and deposits dust into a filter at the front of the machine, protecting indoor air quality.



Mustang 1500 with Vac-Trac



The Mustang 1500 can be used to burnish, spray buff and damp strip. Repair and restore worn floor finish in high traffic areas without using chemicals to strip the entire area.

Printed on Green Seal® certified paper that contains 30% recycled post-consumer fiber.

SPECIFICATIONS

# MUSTANG 1500

<b>Pad Speed</b>	1500
<b>Pad Size</b>	20 in (51 cm)
<b>Pad Driver</b>	Flexible polypropylene
<b>Motor</b>	
Type	DC Rectified Permanent Magnet
Frame Size	66
Voltage	115V or 240V
HP	1.5 HP (1100 Watts)
RPM	3200
<b>Current</b>	13A at 115V (Typical conditions) 6.5A at 240V (Typical conditions)
<b>Overload Protection</b>	17.5A, 115V Model 8A, 240V Model
<b>Drive</b>	Belt and Pulley
<b>Construction</b>	11-gage powder-coated steel
<b>Wheels</b>	5 in (13 cm) non-marking
<b>Handle</b>	14-gage chrome plated steel
<b>Sound Level</b>	63 dBA
<b>Safety Switch</b>	Mechanical lock-out switch
<b>Cord Length</b>	50' (115V Model) 75' (240V Model)
<b>Cord Type</b>	14-3 ST Safety Yellow (115V Model) 16-3 ST Safety Yellow (240V Model)
<b>Dimensions (L x W x H)</b>	27 x 21 x 46 in 69 x 53 x 117 cm
<b>Machine Weight</b>	97 lbs (44 kg)
<b>Shipping Weight</b>	109 lbs (49.5 kg)
<b>Shipping Class</b>	125
<b>Warranty</b>	3 years parts, 1 year labor
<b>Productivity</b>	9,545 ft <sup>2</sup> /hr (887 m <sup>2</sup> /hr)



1. The mechanical lock-out prevents accidental activation or unauthorized use of the machine.
2. The circuit breaker in the handle protects the Mustang 1500 from overloads and helps prevent tripping the building circuit breakers.
3. Reinforced cord strain relief prevents damage to the cord.
4. The powerful 66-frame, 1.5 HP motor delivers all the burnishing muscle you'll need.
5. The handle adjusts to operator's comfortable working level, then locks into place.
6. A safety-yellow vinyl bumper surrounds the burnisher's deck to protect walls and fixtures from accidental damage.
7. The built-in wheel carriage allows easy transport on stairways.



**NSS ENTERPRISES, INC.**

3115 Frenchmens Road  
Toledo, OH 43607-2958  
USA  
(800) 677-1663 **TEL**  
(419) 531-3761 **FAX**  
info@nss.com

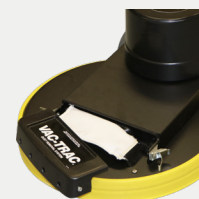
**OPTIONS AND ACCESSORIES**

**ECOSTRIP**



Ecostrip 400 pads are coated with a specially formulated diamond abrasive that can remove layers of floor finish without stripping chemicals.

Ecostrip Buff pads have a fine 8500 grit diamond coating that brings back the shine after scrubbing. Perfect for high traffic areas and restoration work.



**Vac-Trac Dust Control System**

Collect the powder that often results from burnishing old floor finish into a filter at the front of the machine.

Easily clean and replace the filter when needed.