

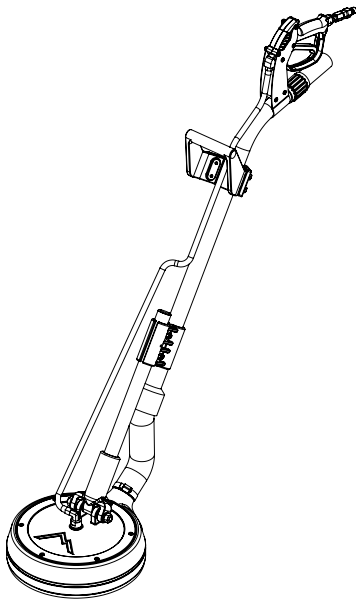
Instructions for 8903, 8904, and 8908 Spinner®



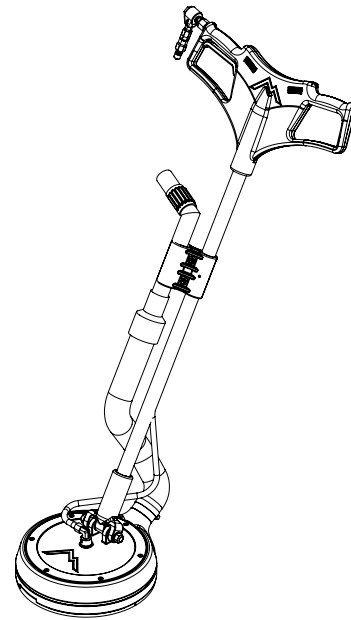
Please read before use.



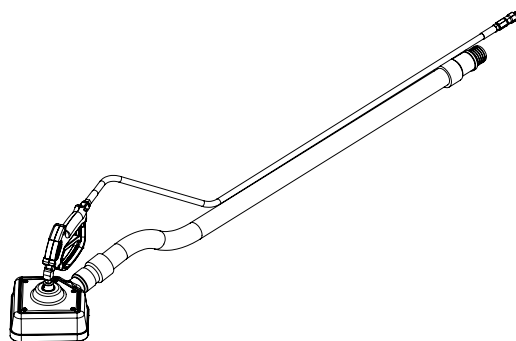
Register your product
at: <http://www.mytee.com/support/register/>



8903 - Wand Handle



8904 - T-Handle



8908 - Counter Spinner®

[General Information p.2](#)

[8903 p. 4](#)

[8904 p. 6](#)

[8908 p. 8](#)

Model # _____

Serial # _____

Form # ADP-SPIN

3-17

GENERAL INFORMATION

Dear Customer:

Congratulations on the purchase of your new Spinner®. As you are already aware, the scene of the equipment world is becoming more high tech, and we at Mytee Products Inc. strive to keep you on the cutting edge with superior quality and technology.

Keep in mind that the Spinner® is a machine, so neglect or abuse will cause unnecessary damage and void the warranty. However with simple maintenance the Spinner® will give quality performance for many years to come.

If warranty questions arise, please consult your user manual or get in touch with your distributor. If you have questions about maintenance, replacing parts or ordering parts, please call an authorized Mytee Products Inc. Service Center. To see an updated list, visit our website at www.mytee.com

Before you begin cleaning, please read your manual thoroughly.

Sincerely,
Mytee Customer Care Dept.

Parts and Service

Repairs, when required, should be performed by Mytee service personnel or Mytee authorized Service Center using Mytee original replacement parts and accessories. Call Mytee for repair parts or service. Please specify the Model and Serial Number when discussing your machine.

Name Plate

The Model and Serial Number of your machine are shown on the Nameplate on the back panel of the machine. This information is needed when ordering repair parts for the machine. Use the space provided on the front cover to note the Model and Serial Number of your machine for future reference.

Unpacking the Machine

When the machine is delivered, carefully inspect the shipping carton and the machine for damage. If damage is evident, save the shipping carton so that it can be inspected by the carrier that delivered it. Contact the carrier immediately to file a freight damage claim.

Caution and Warnings

Symbols

Mytee uses the symbols below to signal potentially dangerous conditions. Always read this information carefully and take the necessary steps to protect personnel and property.



DANGER

Is used to warn of immediate hazards that will cause severe personal injury or death.



WARNING

Is used to call attention to a situation that could cause severe personal injury.



CAUTION

Is used to call attention to a situation that could cause minor personal injury or damage to the machine or other property. When using an electrical appliance, basic precautions should always be followed, including the following: Read all instructions before using this machine. This product is intended for commercial use only.



WARNING

To reduce the risk of fire, electrical shock, or injury:

1. Read all instructions before using equipment.
2. Use only as described in this manual. Use only manufacturer's recommended attachments.
3. Always unplug or disconnect the appliance from power supply when not in use.
4. Do not allow to be used as a toy. Close attention is necessary when used by or near children.
5. Do not use in areas where flammable or combustible material may be present.
6. Do not leave the unit exposed to harsh weather elements. Temperatures below freezing may damage components and void warranty.
7. Use only the appropriate handles to move and lift unit. Do not use any other parts of this machine for this purpose.
8. Keep hair, loose clothing, fingers, and all parts of the body away from all openings and moving parts.
9. Use extra care when cleaning on stairs.
10. When cleaning and servicing the machine, local or national regulations may apply

to the safe disposal of liquids which may contain: chemicals, grease, oil, acid, alkalines, or other dangerous liquids.

11. Do not leave operating unattended.



CAUTION

Use only non-flammable liquid in this machine.

Preparation

1. Remove furniture from cleaning area, and sweep or vacuum.
2. Protect cabinets, carpets, walls and painted surfaces from spray with drop cloths or plastic.
3. Identification – Identify the type of floor you are going to clean. This step is vital, since each flooring type may call for different chemicals, brushes and equipment. Basic flooring types are: resilient (vinyl, VCT, linoleum), which is generally softer; stone (terrazzo, quarry, ceramic, brick, concrete) made of natural materials; and stone substitute (marble, slate and granite), which mimics stone.
4. Application – Once the flooring is identified, apply the appropriate type of cleaning (or in the case of resilient flooring, stripping) chemical. On tile surfaces, spray chemical evenly over tile and grout lines, allowing it to pool in the lines.
5. Emulsification – Chemicals typically require dwell time to remove the dirt and grime driven into the surface. The dirtier the floor, the longer the chemicals may need to dwell. Without proper dwell time, chemicals will not be effective.
6. Agitation and Elimination – Agitate the chemical into the floor to facilitate cleaning using a Spinner® floor machine connected to an extractor. The Spinner® lays down high-pressure spray to agitate and rinse, and vacuums up the solution simultaneously, eliminating it from the surface.

Spinner® Operation

1. Attach the Vacuum and Solution Hoses to the extractor.
2. Attach the Solution Hose to the Male Quick Disconnect and the Vacuum Hose to the Wand Tube.
3. Turn on the extractor to engage the vacuum, while making sure the bottom of the Spinner™ is flush with the cleaning surface to ensure proper suction.
4. Squeeze the Spinner's™ high-pressure trigger gun to dispense solution on to the surface.
5. Hold the machine at waist level and use a back-and-forth motion.

After Use

1. Unplug.
2. Inspect hoses and replaced if damaged.
3. After each use, wipe floor machine with a clean, soft, damp cloth.
4. Do not expose to rain.
5. Store indoors. In a clean, dry place.
6. Do not store sitting on brush.

Maintenance Schedule

| Maintenance item | Daily | Once a week |
|---|-------|-------------|
| Clean and inspect hoses | x | |
| Check for loose hardware | x | |
| Clean machine with clean, soft damp cloth | x | |
| Inspect spray jets once a week. | | x |
| Use Mytee® System Maintainer 3601 every 100 hours. Circulate through the hose and tool. | | x |

Product Specifications

| Spinner® Style | 8903 1.5" Wand Style | 8904 1.5" T-Handle | 8908 Counter Spinner |
|--------------------|-------------------------|--------------------------|-------------------------|
| Tube Construction | Stainless steel | | 1.5" Vacuum Hose |
| Cleaning Path | 12" | | 7.5" |
| PSI Requirements | 500 - 3,000 PSI | | |
| Spray Jets | Dual 1502 | | |
| Product Weight | 18 lbs. | 16 lbs. | 7 lbs. |
| Product Dimensions | 12" x 14" x 52" | 16" x 19" x 49" | 11" x 9" x 9" |

GENERAL INFORMATION

FAQs

Q – How much PSI do I need to operate the Spinner®?

A – Spinners® require between 500 and 3,000 PSI.

Troubleshooting

The Spinner® is not spinning.

1. Inspect the jets to make sure they are not clogged.
2. Check the machine for a normal flow of solution by disconnecting the Solution Hose from the Spinner® and letting the liquid run freely.
3. If the solution's flow is disrupted, use Mytee® System Maintainer 3601.
4. Try to spin the unit by hand. If it does not move, replace the swivel. If it moves, the seal may need rebuilding. Take the Spinner® to your local service center.

Guidelines

1. For ease of use, keep the brush and manifold balanced and flat.
2. Adjust the handle at a comfortable height for the operator; making sure the brush remains balanced before starting the extractor.
3. The Spinner® operates differently according to the surface. Smooth surfaces offer more resistance than surfaces such as tile and grout. If you experience resistance of movement, adjust the vacuum release slot to release air from the Vacuum Hose.

Replacement Parts

8903, and 8904

Brush & Glide Kit – No. A109

Glide – No. P500

Brush – No. G098

Swivel – No. H926

Rebuild Kit – No. H927

8908

Glide – No. P593

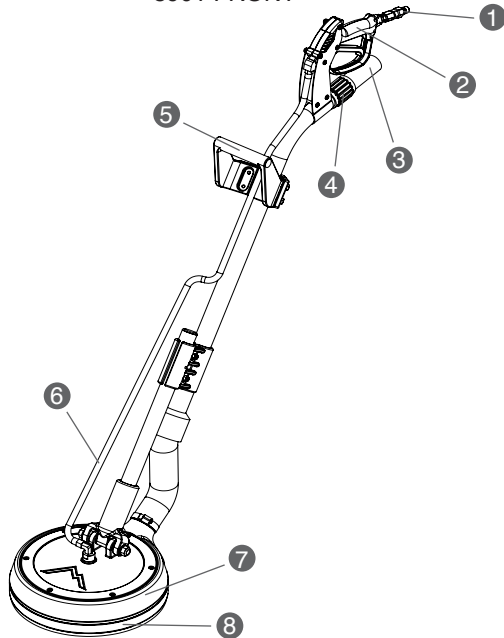
Brush – No. G111

Swivel – No. H926

Rebuild Kit – No. H927

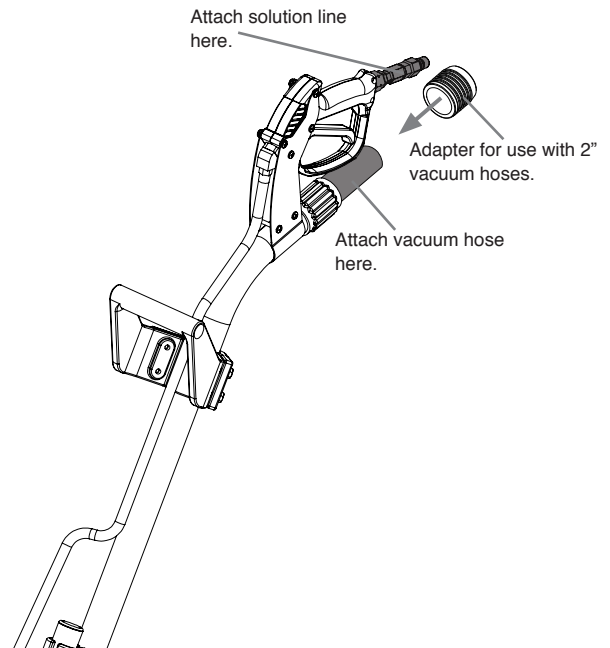
8903 WAND HANDLE, 1.5" TUBE SPINNER®

8901 FRONT



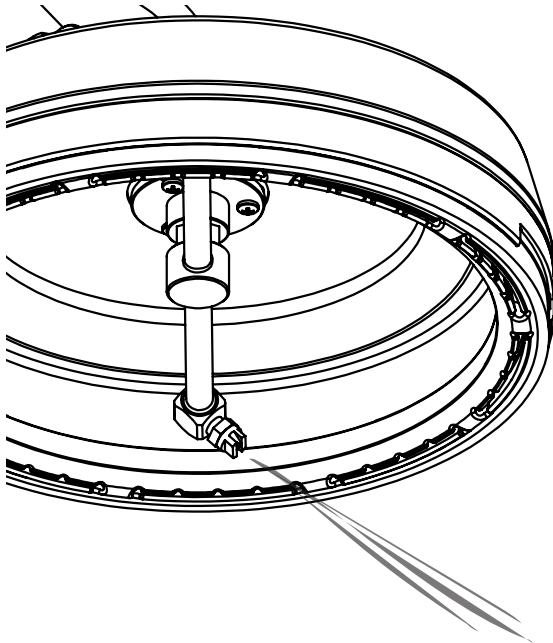
- | | |
|---------------------------|-------------------------------------|
| 1. Quick disconnect | 5. Wand grip handle |
| 2. High-pressure gun | 6. Hi-pressure solution hose |
| 3. Vacuum hose connection | 7. 12" Spinner® head |
| 4. Vac relief | 8. Nylon glide with removable brush |

VACUUM HOSE AND SOLUTION HOSE ATTACHMENT



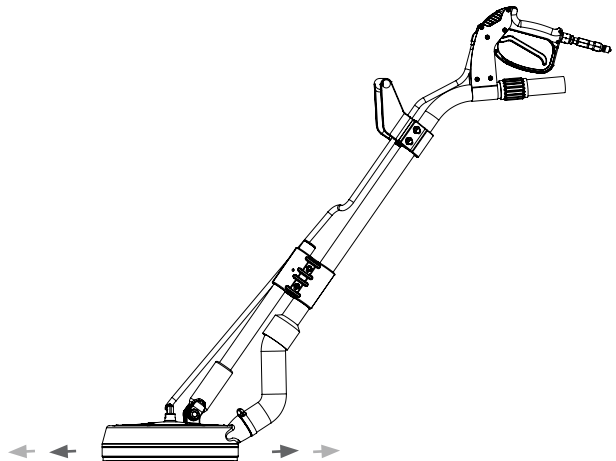
After the Vacuum Hose and Solution Hose are attached to the extractor, connect the Solution Hose to the Male Quick Disconnect, and the Vacuum Hose to wand tube. Use the included adapter if you are using a 2" vacuum hose. You can permanently attach the adapter using silicone or similar adhesive.

JETS



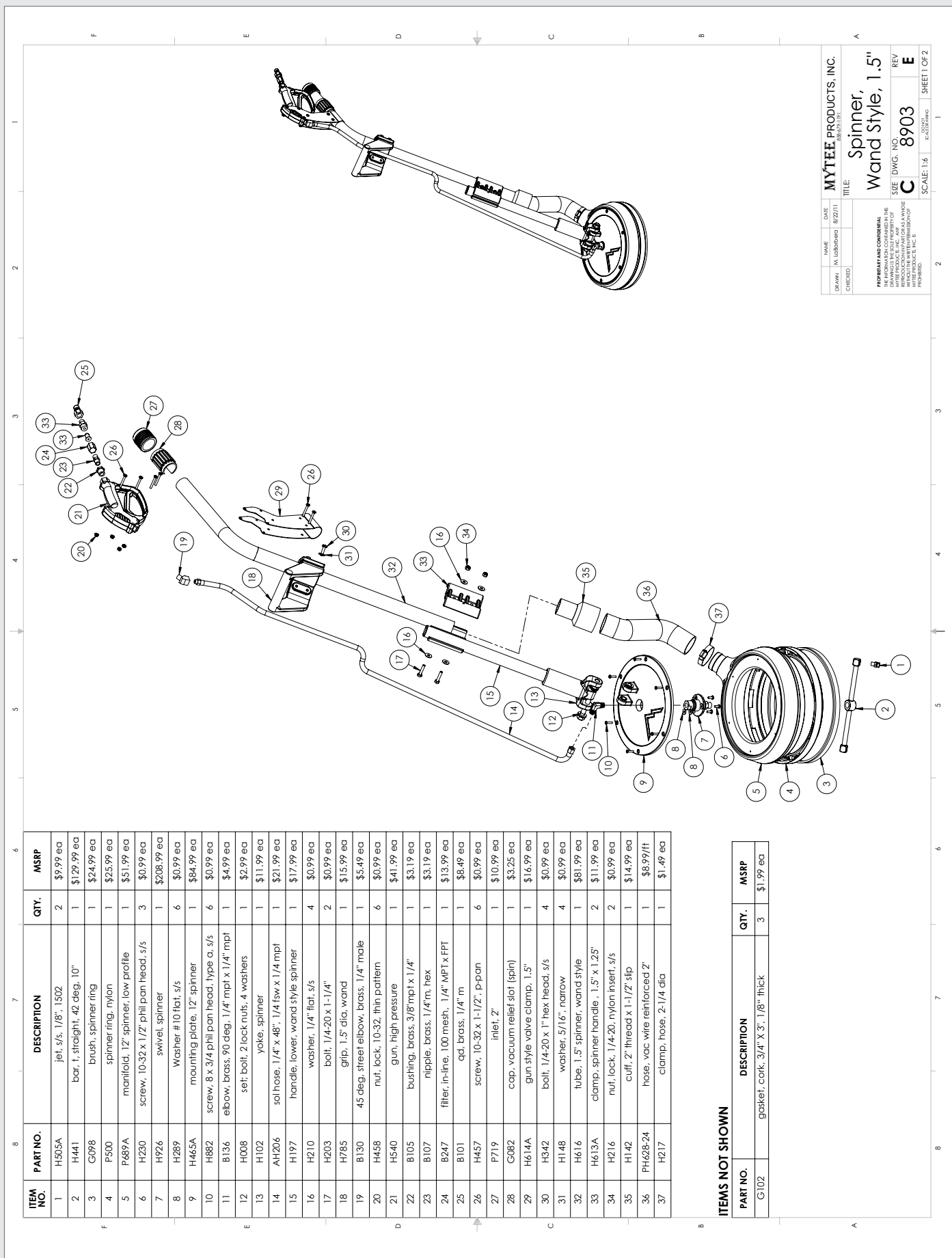
After the extractor is turned on and vacuum is engaged, squeeze the High-Pressure Trigger Gun. Liquid flows through the Solution Hose and activates the Spinner Bar.

USE



Hold the machine at waist level and use a back-and-forth motion.

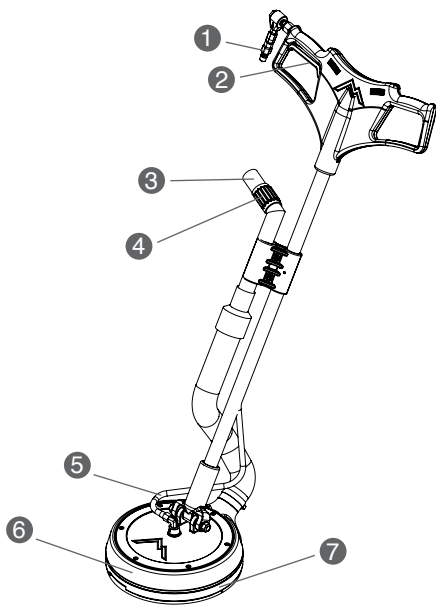
8903 WAND HANDLE, 1.5" TUBE SPINNER®



| ITEMS NOT SHOWN | | |
|-----------------|-------------------------------------|-------------|
| PART NO. | DESCRIPTION | QTY. MSRP |
| G102 | gasket, cork, 3/4" x 3", 1/8" thick | 3 \$1.99 ea |

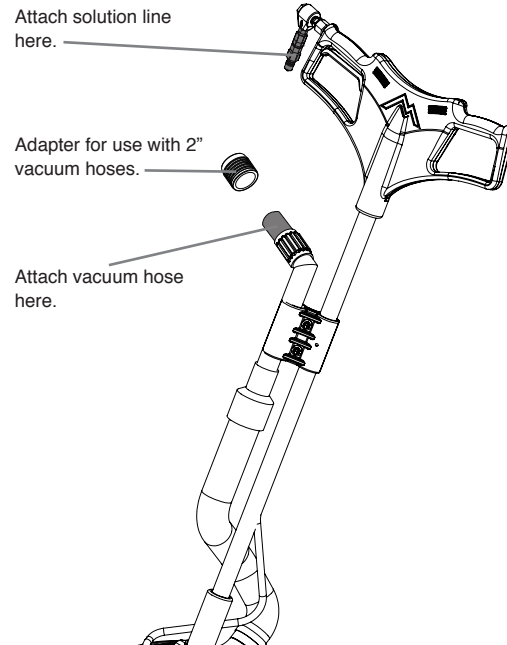
8904 "T" HANDLE, 1.5" TUBE SPINNER®

8904 FRONT



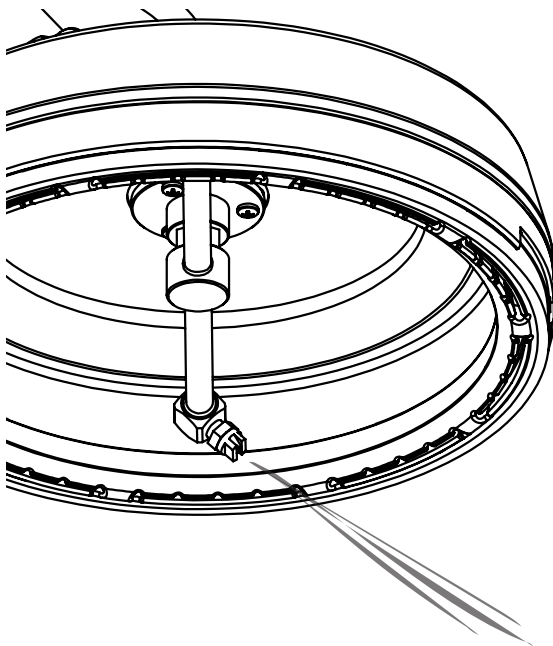
- | | |
|---------------------------|---|
| 1. Quick disconnect | 5. Hi-pressure solution hose |
| 2. High-pressure gun | 6. 12" Spinner® head |
| 3. Vacuum hose connection | 7. Nylon glide with remove- able brush |
| 4. Vac relief | |

VACUUM HOSE AND SOLUTION HOSE ATTACHMENT



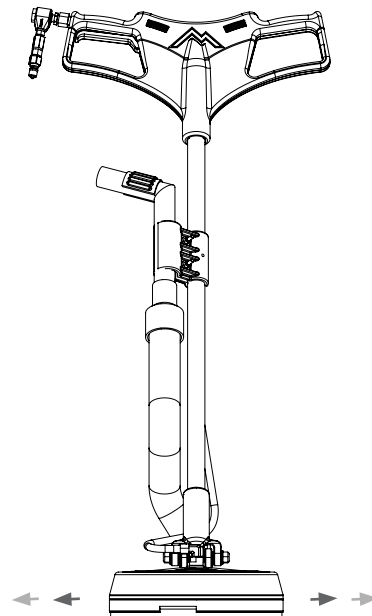
After the Vacuum Hose and Solution Hose are attached to the extractor, connect the Solution Hose to the Male Quick Disconnect, and the Vacuum Hose to wand tube. Use the included adapter if you are using a 2" vacuum hose. You can permanently attach the adapter using silicone or similar adhesive.

JETS



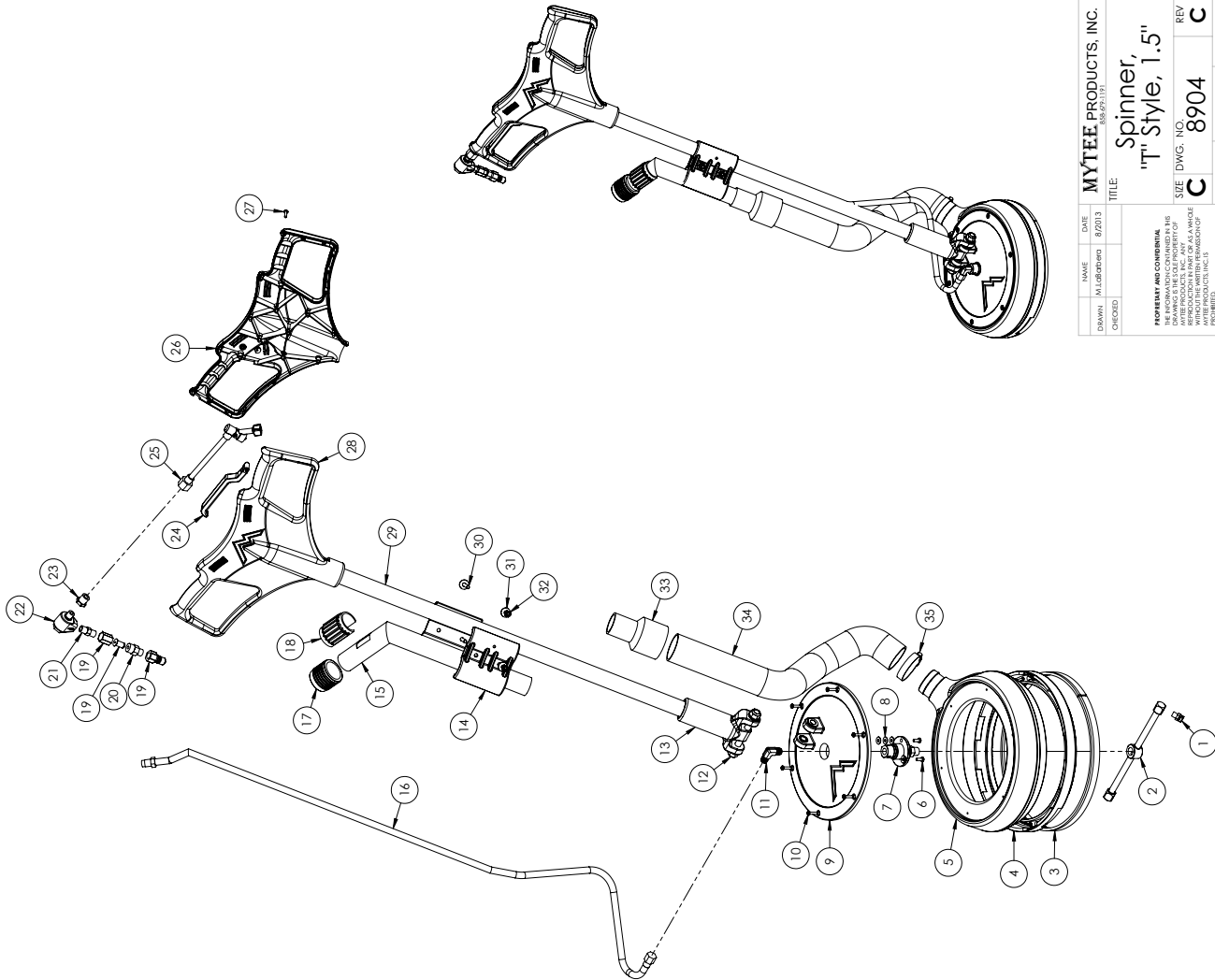
After the extractor is turned on and vacuum is engaged, squeeze the High-Pressure Trigger Gun. Liquid flows through the Solution Hose and activates the Spinner Bar.

USE



Hold the machine at waist level and use side to side.

8904 "T" HANDLE, 1.5" TUBE SPINNER®



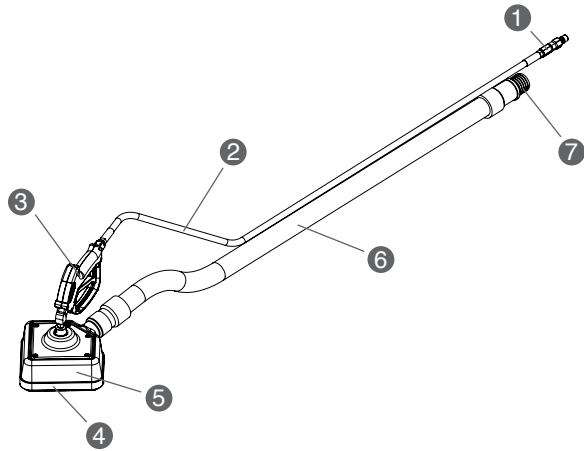
| | | |
|--|------------------|-------------------------|
| MYTEE PRODUCTS, INC. 808-879-1151 | | DATE 8/20/13 |
| NAME MLabStore | TITLE | |
| DRAWN CHECKED | 8/20/13 | |
| PROPERTY AND CONFIDENTIAL THE INFORMATION CONTAINED IN THIS DRAWING IS THE PROPERTY OF MYTEE PRODUCTS, INC. AND IS NOT TO BE REPRODUCED IN PART OR AS A WHOLE WITHOUT THE WRITTEN PERMISSION OF MYTEE PRODUCTS, INC. | | |
| PROHIBITED | SIZE C | DWG. NO. 8904 |
| PROHIBITED | REV C | SHEET OF 2 |
| SCALE: 1/6 | 1/2" = 1'-0" | SHEET OF 2 |

| ITEM NO. | PART NO. | DESCRIPTION | QTY. | MSRP |
|----------|----------|--|------|-------------|
| 1 | H505A | jet s/s, 1/8", 1502 | 2 | \$0.99 ea |
| 2 | H441 | bar, 1, straight, 42 deg, 10" | 1 | \$129.99 ea |
| 3 | G098 | brush, spinner ring | 1 | \$24.97 ea |
| 4 | P500 | spinner ring, nylon | 1 | \$25.97 ea |
| 5 | P689A | manifold, 12" spinner, low profile | 1 | \$51.99 ea |
| 6 | H230 | screw, 10-32 x 1/2" phil pan head, s/s | 3 | \$0.99 ea |
| 7 | H926 | swivel, spinner | 1 | \$208.99 ea |
| 8 | H289 | washer #10 flat, s/s | 9 | \$0.99 ea |
| 9 | H465A | mounting plate, 12" spinner | 1 | \$84.99 ea |
| 10 | H882 | screw, 8 x 3/4 phil pan head, type a, s/s | 6 | \$0.99 ea |
| 11 | B136 | elbow, brass, 90 deg, 1/4" mpt x 1/4" mpt | 1 | \$4.99 ea |
| 12 | H008 | set; bolt, 2 lock nuts, 4 washers | 1 | \$2.99 ea |
| 13 | H102 | yoke, spinner | 1 | \$1.99 ea |
| 14 | H613A | clamp, spinner handle, 1.5" x 1.25" | 2 | \$1.97 ea |
| 15 | H094 | tube, vac. elbow, 1.5" dia, spinner | 1 | \$48.99 ea |
| 16 | AH206 | sol hose, black 48" (OAL), fsw 1/4" x m 1/4" | 1 | \$21.99 ea |
| 17 | P719 | Inlet, 2" | 1 | \$10.97 ea |
| 18 | G082 | cap, vacuum relief slot (spin) | 1 | \$3.25 ea |
| 19 | B101 | qd, brass, 1/4" m | 1 | \$8.49 ea |
| 20 | B247 | filter, in-line, 100 mesh, 1/4" mpt x fpl | 1 | \$13.99 ea |
| 21 | B107 | ripple brass, 1/4" m, hex | 1 | \$3.19 ea |
| 22 | B100A | swivel, high pressure, stainless steel | 1 | \$45.99 ea |
| 23 | B105 | bushing, brass, 3/8"mpt x 1/4" | 1 | \$3.19 ea |
| 24 | P591 | trigger, spinner | 1 | \$19.97 ea |
| 25 | B540 | valve, high pressure, spinner | 1 | \$39.97 ea |
| 26 | P579 | handle, back half, spinner | 1 | \$19.99 ea |
| 27 | P7155 | screw, 8 x 5/8", phil pan, s/s | 14 | \$0.99 ea |
| 28 | P578 | handle, front half, spinner | 1 | \$25.97 ea |
| 29 | H092 | handle, "T", spinner | 1 | \$139.99 ea |
| 30 | H204 | bolt, 1/4-20 x 1 3/4" hex head, s/s | 2 | \$0.99 ea |
| 31 | H210 | washer, 1/4" flat, s/s | 4 | \$0.99 ea |
| 32 | H216 | nut, lock, 1/4-20, nylon insert, s/s | 2 | \$0.99 ea |
| 33 | H142 | cuff, 2" thread x 1-1/2" slip | 1 | \$14.99 ea |
| 34 | PH628-24 | vac hose, 2", wire reinforced | 1 | \$8.99/ft |
| 35 | H217 | clamp, hose, 2-1/4" dia | 1 | \$1.49 ea |

ITEMS NOT SHOWN

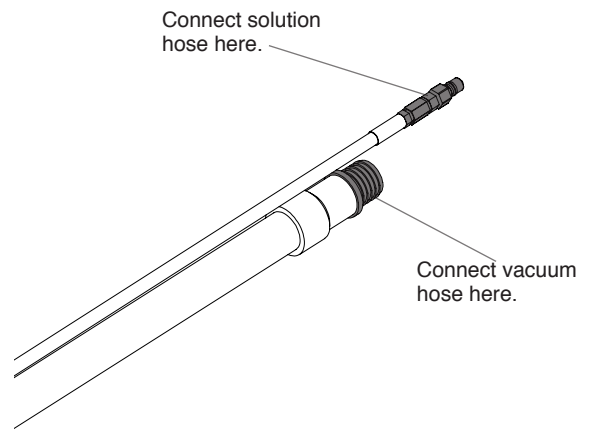
| PART NO. | DESCRIPTION | QTY. | MSRP |
|----------|---------------------------------|------|------------|
| G102 | asket cor. 3/4" X 3" 1/8" thick | 3 | \$ 1.99 ea |

8908 FRONT



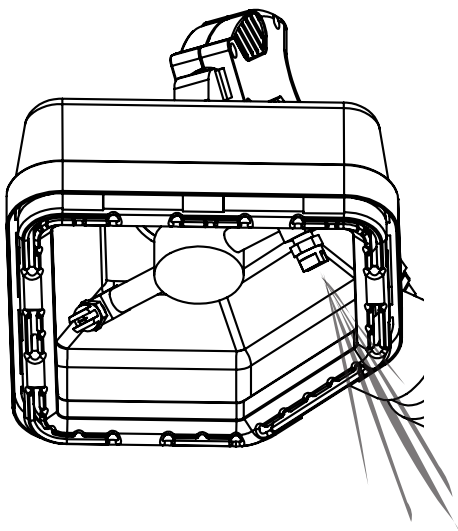
- | | |
|------------------------------|--------------------------------|
| 1. Male quick disconnect | 5. 6" Spinner® head |
| 2. Solution hose | 6. Vacuum hose |
| 3. High-pressure trigger gun | 7. Vacuum hose connection port |
| 4. Nylon glide | |

VACUUM HOSE AND SOLUTION HOSE ATTACHMENT



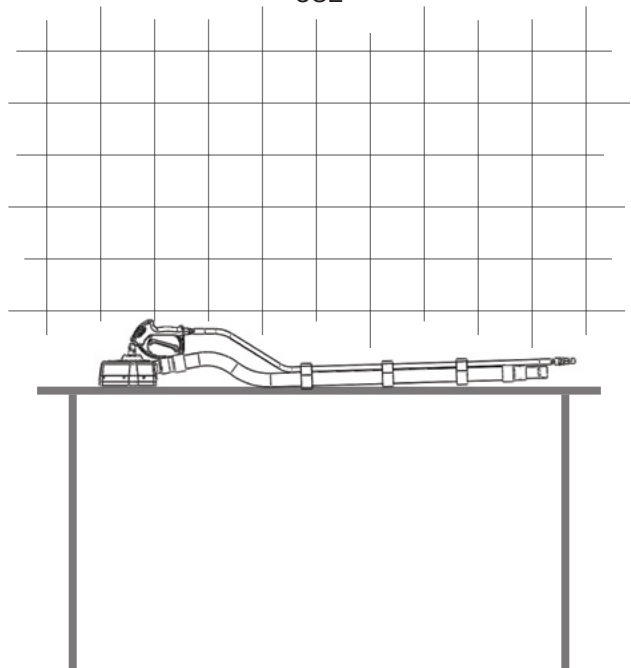
After the Vacuum Hose and Solution Hose are attached to the extractor, connect the Solution Hose to the Male Quick Disconnect, and the Vacuum Hose to wand tube.

JETS



After the extractor is turned on and vacuum is engaged, squeeze the High-Pressure Trigger Gun. Liquid flows through the Solution Hose and activates the Spinner Bar.

USE



Use unit on counter top or other hard surface.

ITEM NO.

PART NO.

DESCRIPTION

QTY.

MSRP

1

H505A

jet, s/s, 1/8", 1.502

2

\$9.99 ea

ITEM NO.

PART NO.

DESCRIPTION

QTY.

MSRP

2

H425

spray bar, 4"

1

\$17.99 ea

ITEM NO.

PART NO.

DESCRIPTION

QTY.

MSRP

3

G111

brush, corner spinner

1

\$29.99 ea

ITEM NO.

PART NO.

DESCRIPTION

QTY.

MSRP

4

P593

glide, nylon, corner spinner

1

\$19.99 ea

ITEM NO.

PART NO.

DESCRIPTION

QTY.

MSRP

5

P701

manifold, counter tool

1

\$35.99 ea

ITEM NO.

PART NO.

DESCRIPTION

QTY.

MSRP

6

H230

screw, 10-32 x 1/2" phl pan head, s/s

8

\$0.99 ea

ITEM NO.

PART NO.

DESCRIPTION

QTY.

MSRP

7

H926

swivel, spinner

1

\$198.99 ea

ITEM NO.

PART NO.

DESCRIPTION

QTY.

MSRP

8

H289

washer #10 flat, s/s

9

\$0.99 ea

ITEM NO.

PART NO.

DESCRIPTION

QTY.

MSRP

9

H482

coating, counter spinner

1

\$27.99 ea

ITEM NO.

PART NO.

DESCRIPTION

QTY.

MSRP

10

B107

nut, brass, 1/4"m, hex

1

\$3.19 ea

ITEM NO.

PART NO.

DESCRIPTION

QTY.

MSRP

11

B130

45 deg. street elbow, brass, 1/4" male

1

\$5.49 ea

ITEM NO.

PART NO.

DESCRIPTION

QTY.

MSRP

12

H540

gun, high pressure

1

\$41.99 ea

ITEM NO.

PART NO.

DESCRIPTION

QTY.

MSRP

13

B105

bushing, brass, 3/8mpt x 1/4"

1

\$3.19 ea

ITEM NO.

PART NO.

DESCRIPTION

QTY.

MSRP

14

AH195

sol hose, 57" x 1/4", [OAL], m

1

\$37.99 ea

ITEM NO.

PART NO.

DESCRIPTION

QTY.

MSRP

15

B247

filter, in-line, 100 mesh, 1/4" MPT x FPT

1

\$13.99 ea

ITEM NO.

PART NO.

DESCRIPTION

QTY.

MSRP

16

B101

qd. brass, 1/4" m

1

\$8.49 ea

ITEM NO.

PART NO.

DESCRIPTION

QTY.

MSRP

17

H655

coupler, 1-1/2" barb to barb fitting

1

\$8.99 ea

ITEM NO.

PART NO.

DESCRIPTION

QTY.

MSRP

18

H300

cuff, hose, 1-1/2 x 1-1/2, wire

2

\$5.99 ea

ITEM NO.

PART NO.

DESCRIPTION

QTY.

MSRP

19

H504

vac hose, 4' x 1-1/2", 1sw cu

1

\$19.49 ea

ITEMS NOT SHOWN

PART NO.

DESCRIPTION

QTY.

MSRP

G079

hose wrap, heat guard

1

\$2.99 ea

1

2

3

4

5

6

7

8

1

2

3

4

5

6

7

8

9

10

11

12

13

14

15

16

17

18

19

MYTEE PRODUCTS, INC.
866-672-1131

Spinner, Counter

SIZE DWG. NO. C 8908

REV B

SCALE: 1/4" = 1'-0"

SHEET 1 OF 1

NOTES



Mytee Products Inc.
13655 Stowe Dr.
Poway, CA 92064
www.mytee.com
FX 858.679.7814

© 2017 Mytee Products Inc.
Printed in the U.S.A.

[New & Reconditioned Equipment & Parts - www.southeasternequipment.net](http://www.southeasternequipment.net)