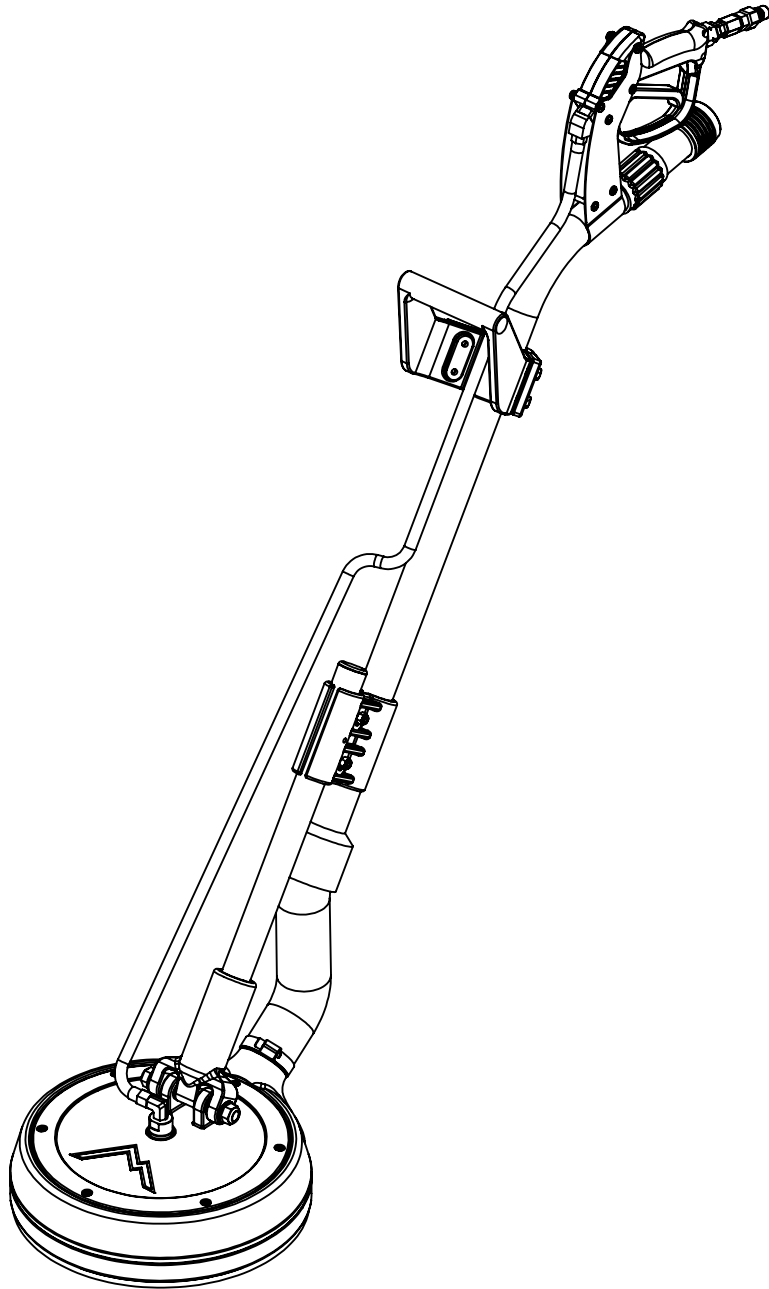
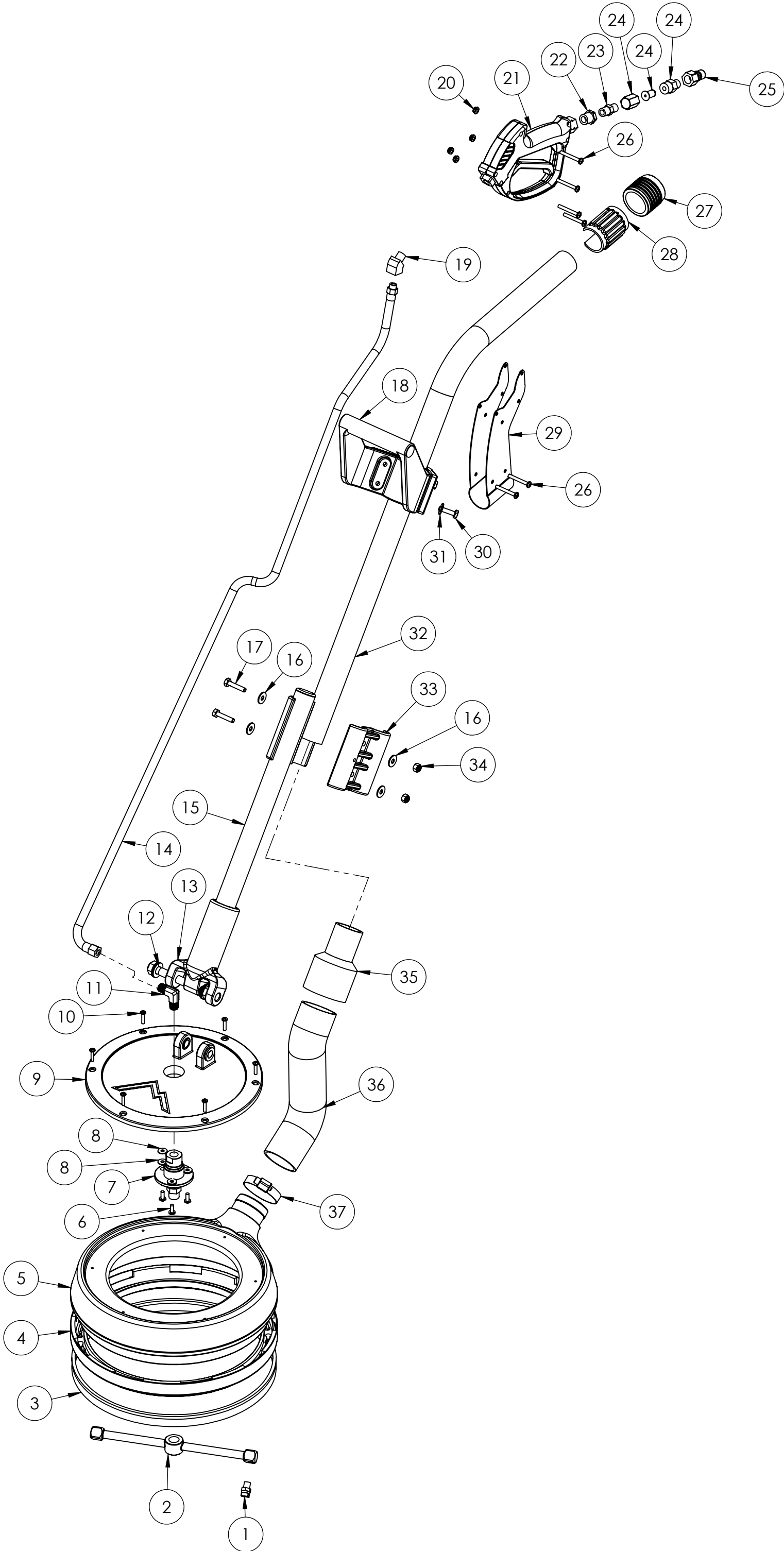


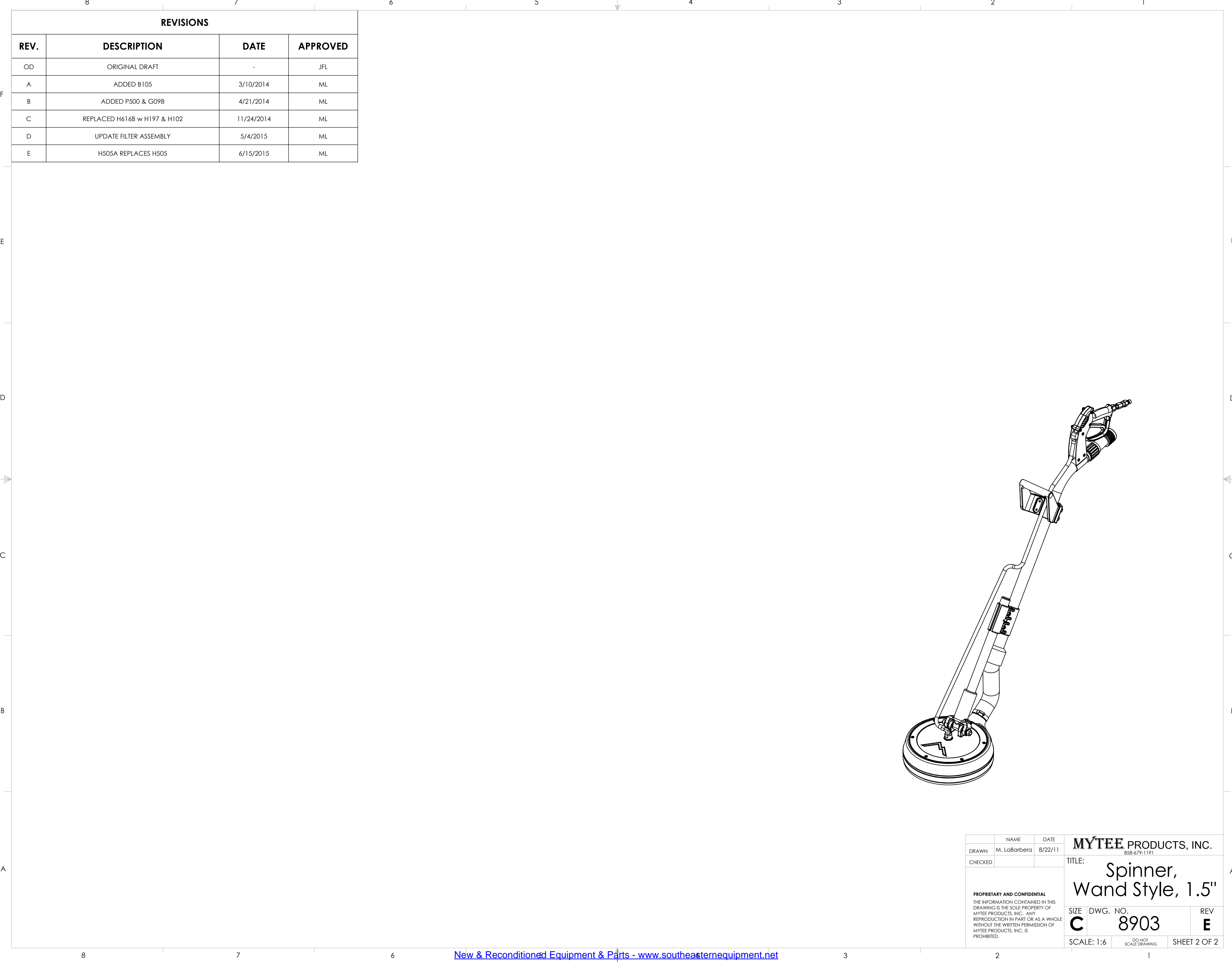
ITEM NO.	PART NO.	DESCRIPTION	QTY.	MSRP
1	H505A	jet, s/s, 1/8", 1502	2	\$9.99 ea
2	H441	bar, t, straight, 42 deg, 10"	1	\$129.99 ea
3	G098	brush, spinner ring	1	\$24.99 ea
4	P500	spinner ring, nylon	1	\$25.99 ea
5	P689A	manifold, 12" spinner, low profile	1	\$51.99 ea
6	H230	screw, 10-32 x 1/2" phil pan head, s/s	3	\$0.99 ea
7	H926	swivel, spinner	1	\$208.99 ea
8	H289	Washer #10 flat, s/s	6	\$0.99 ea
9	H465A	mounting plate, 12" spinner	1	\$84.99 ea
10	H882	screw, 8 x 3/4 phil pan head, type a, s/s	6	\$0.99 ea
11	B136	elbow, brass, 90 deg, 1/4" mpt x 1/4" mpt	1	\$4.99 ea
12	H008	set; bolt, 2 lock nuts, 4 washers	1	\$2.99 ea
13	H102	yoke, spinner	1	\$11.99 ea
14	AH206	sol hose, 1/4" x 48", 1/4 fsw x 1/4 mpt	1	\$21.99 ea
15	H197	handle, lower, wand style spinner	1	\$17.99 ea
16	H210	washer, 1/4" flat, s/s	4	\$0.99 ea
17	H203	bolt, 1/4-20 x 1-1/4"	2	\$0.99 ea
18	H785	grip, 1.5" dia, wand	1	\$15.99 ea
19	B130	45 deg, street elbow, brass, 1/4" male	1	\$5.49 ea
20	H458	nut, lock, 10-32, thin pattern	6	\$0.99 ea
21	H540	gun, high pressure	1	\$41.99 ea
22	B105	bushing, brass, 3/8"mpt x 1/4"	1	\$3.19 ea
23	B107	nipple, brass, 1/4"m, hex	1	\$3.19 ea
24	B247	filter, in-line, 100 mesh, 1/4" MPT x FPT	1	\$13.99 ea
25	B101	qd, brass, 1/4" m	1	\$8.49 ea
26	H457	screw, 10-32 x 1-1/2", p-pan	6	\$0.99 ea
27	P719	barb, 1-1/2" ID x 2" OD, spinners	1	\$4.99 ea
28	G082	cap, vacuum relief slot (spin)	1	\$3.25 ea
29	H614A	gun style valve clamp, 1.5"	1	\$16.99 ea
30	H342	bolt, 1/4-20 x 1" hex head, s/s	4	\$0.99 ea
31	H148	washer, 5/16", narrow	4	\$0.99 ea
32	H616	tube, 1.5" spinner, wand style	1	\$81.99 ea
33	H613A	clamp, spinner handle , 1.5" x 1.25"	2	\$11.99 ea
34	H216	nut, lock, 1/4-20, nylon insert, s/s	2	\$0.99 ea
35	H142	cuff, 2" thread x 1-1/2" slip	1	\$14.99 ea
36	PH628-24	hose, vac wire reinforced 2"	1	\$8.99/ft
37	H217	clamp, hose, 2-1/4 dia	1	\$1.49 ea

ITEMS NOT SHOWN

PART NO.	DESCRIPTION	QTY.	MSRP
G102	gasket, cork, 3/4" X 3", 1/8" thick	3	\$1.99 ea



	NAME	DATE	MYTEE PRODUCTS, INC.	
DRAWN	M. LaBarbera	8/22/11	858-679-1191	
CHECKED			TITLE:	
PROPRIETARY AND CONFIDENTIAL THE INFORMATION CONTAINED IN THIS DRAWING IS THE SOLE PROPERTY OF MYTEE PRODUCTS, INC. ANY REPRODUCTION IN PART OR AS A WHOLE WITHOUT THE WRITTEN PERMISSION OF MYTEE PRODUCTS, INC. IS PROHIBITED.			Spinner, Wand Style, 1.5"	
			SIZE DWG. NO.	REV
			C 8903	E
			SCALE: 1:6	DO NOT SCALE DRAWING SHEET 1 OF 2



REVISIONS			
REV.	DESCRIPTION	DATE	APPROVED
OD	ORIGINAL DRAFT	-	JFL
A	ADDED B105	3/10/2014	ML
B	ADDED P500 & G098	4/21/2014	ML
C	REPLACED H616B w H197 & H102	11/24/2014	ML
D	UPDATE FILTER ASSEMBLY	5/4/2015	ML
E	H505A REPLACES H505	6/15/2015	ML

	NAME	DATE	MYTEE PRODUCTS, INC. 858-679-1191	
DRAWN	M. LaBarbera	8/22/11		
CHECKED			TITLE: Spinner, Wand Style, 1.5"	
PROPRIETARY AND CONFIDENTIAL THE INFORMATION CONTAINED IN THIS DRAWING IS THE SOLE PROPERTY OF MYTEE PRODUCTS, INC. ANY REPRODUCTION IN PART OR AS A WHOLE WITHOUT THE WRITTEN PERMISSION OF MYTEE PRODUCTS, INC. IS PROHIBITED.			SIZE C	DWG. NO. 8903
			SCALE: 1:6	REV E
			DO NOT SCALE DRAWING	SHEET 2 OF 2