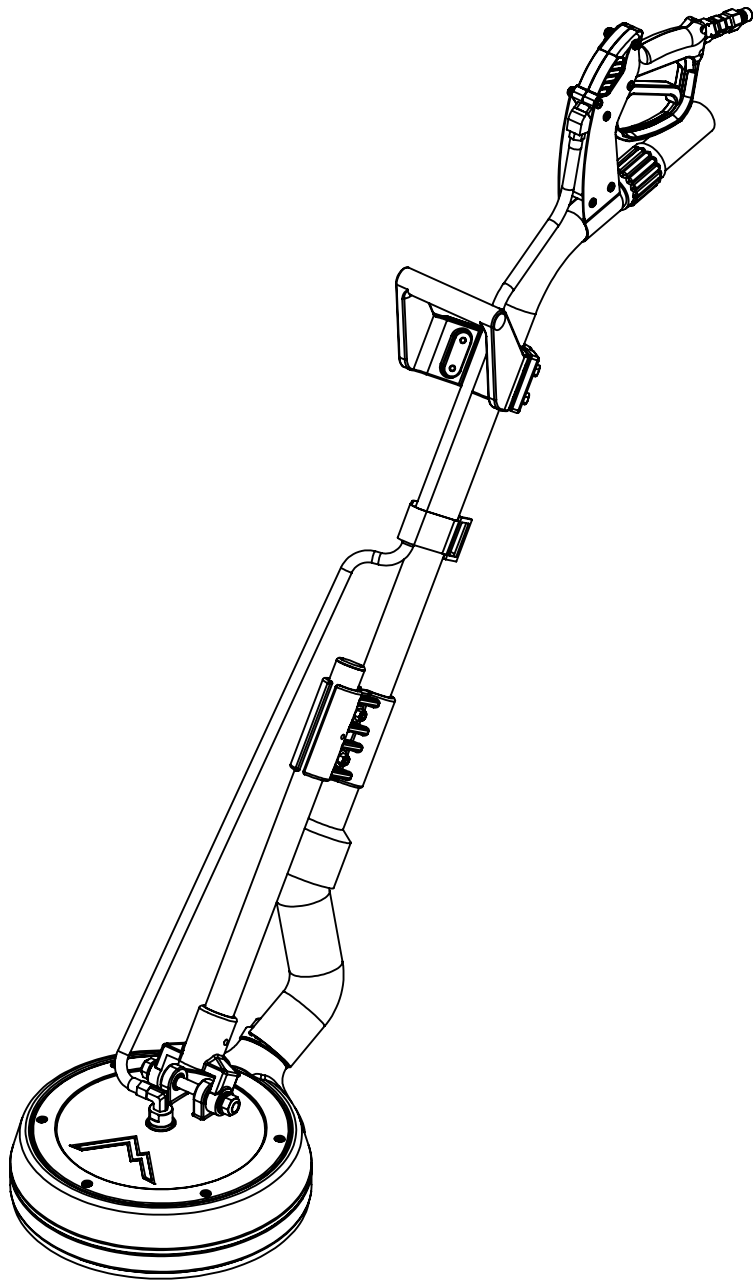
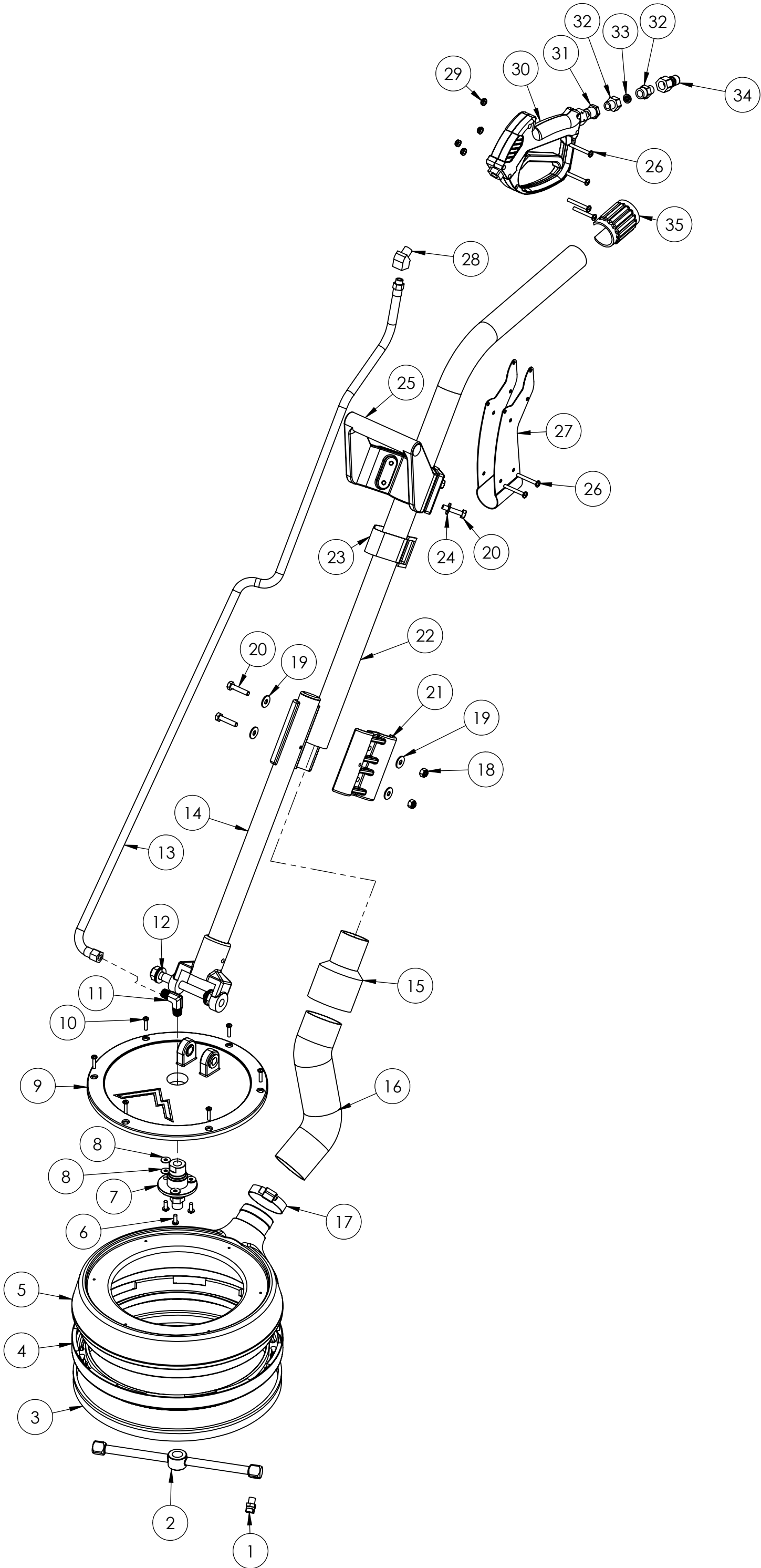
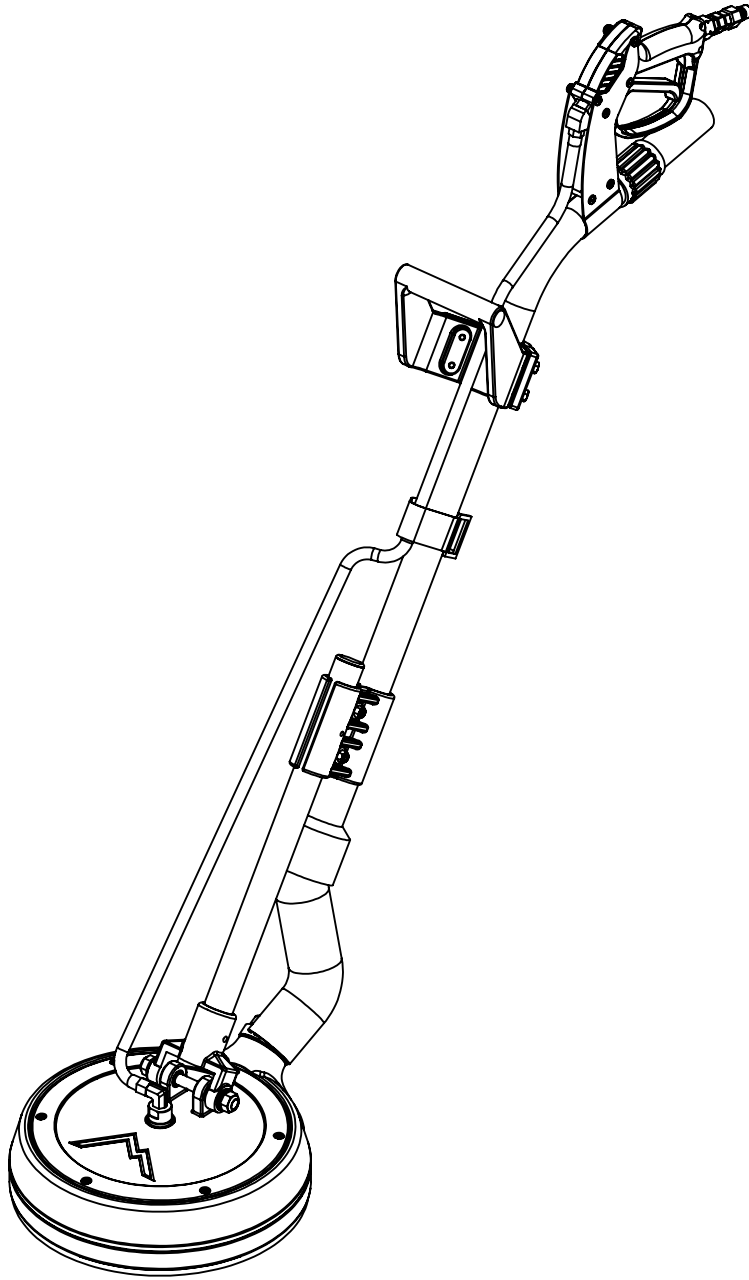


ITEM NO.	PART NO.	DESCRIPTION	QTY.	MSRP
1	H505	jet, s/s, 1/8", 1501	2	\$9.99 ea
2	H441	bar, t, straight, 42 deg, 10"	1	\$129.99 ea
3	G098	brush, spinner ring	1	\$32.99 ea
4	P500	spinner ring, nylon	1	\$37.99 ea
5	P689A	manifold, 12" spinner, low profile	1	\$51.99 ea
6	H230	screw, 10-32 x 1/2" phil pan head, s/s	3	\$0.99 ea
7	H926	swivel, spinner	1	\$198.99 ea
8	H289	Washer #10 flat, s/s	6	\$0.99 ea
9	H465A	casting, 12" low profile spinner	1	\$84.99 ea
10	H882	screw, 8 x 3/4 phil pan head, type a, s/s	6	\$0.99 ea
11	B136	elbow, brass, 90 deg, 1/4" mpt x 1/4" mpt	1	\$4.99 ea
12	H008	set; bolt, 2 lock nuts, 4 washers	1	\$2.99 ea
13	AH206	sol hose, black 48" (OAL), fsw 1/4" x m 1/4"	1	\$21.99 ea
14	H616B	tube, 1.25" spinner, lower handle, w/ yolk	1	\$42.99 ea
15	H498A	cuff, 2" thread x 1-1/2" slip	1	\$14.99 ea
16	PH628-24	hose, vac wire reinforced 2"	1	\$8.99/ft
17	H217	clamp, hose, 2-1/4 dia	1	\$1.49 ea
18	H216	nut, lock, 1/4-20, nylon insert, s/s	2	\$0.99 ea
19	H210	washer, 1/4" flat, s/s	4	\$0.99 ea
20	H203	bolt, 1/4-20 x 1-1/4"	6	\$0.99 ea
21	H613A	clamp, spinner handle , 1.5" x 1.25"	2	\$11.99 ea
22	H616	tube, 1.5" spinner, wand style	1	\$81.99 ea
23	G147	strap, velcro 1.5" x 12"	1	\$3.49 ea
24	H148	washer, 5/16", narrow	4	\$0.99 ea
25	H785	grip, 1.5" dia, wand	1	\$7.99 ea
26	H457	screw, 10-32 x 1-1/2", p-pan	6	\$0.99 ea
27	H614A	gun style valve clamp, 1.5"	1	\$16.99 ea
28	B130	45 deg, street elbow, brass, 1/4" male	1	\$5.49 ea
29	H458	nut, lock, 10-32, thin pattern	6	\$0.99 ea
30	H540	gun, high pressure	1	\$41.99 ea
31	B105	bushing, brass, 3/8"mpt x 1/4"	1	\$3.19 ea
32	H462	housing, filter, 2 piece	1	\$2.99 ea
33	G077	filter, cone	1	\$2.99 ea
34	B101	qd, brass, 1/4" m	1	\$8.49 ea
35	G082	cap, vacuum relief slot (spin)	1	\$3.25 ea



	NAME	DATE	MYTEE PRODUCTS, INC.	
DRAWN	M. LaBarbera	8/22/11	858-679-1191	
CHECKED			TITLE:	
PROPRIETARY AND CONFIDENTIAL THE INFORMATION CONTAINED IN THIS DRAWING IS THE SOLE PROPERTY OF MYTEE PRODUCTS, INC. ANY REPRODUCTION IN PART OR AS A WHOLE WITHOUT THE WRITTEN PERMISSION OF MYTEE PRODUCTS, INC. IS PROHIBITED.			Spinner, Wand Style, 1.5"	
			SIZE	DWG. NO.
			C	8903
			SCALE: 1:6	DO NOT SCALE DRAWING
			SHEET 1 OF 2	

REVISIONS			
REV.	DESCRIPTION	DATE	APPROVED
OD	ORIGINAL DRAFT	-	JFL
A	ADDED B105	3/10/2014	ML
B	ADDED P500 & G098	4/21/2014	ML



	NAME	DATE	MYTEE PRODUCTS, INC. 858-679-1191	
DRAWN	M. LaBarbera	8/22/11		
CHECKED			TITLE: Spinner, Wand Style, 1.5"	
PROPRIETARY AND CONFIDENTIAL THE INFORMATION CONTAINED IN THIS DRAWING IS THE SOLE PROPERTY OF MYTEE PRODUCTS, INC. ANY REPRODUCTION IN PART OR AS A WHOLE WITHOUT THE WRITTEN PERMISSION OF MYTEE PRODUCTS, INC. IS PROHIBITED.			SIZE C	DWG. NO. 8903
			SCALE: 1:6	REV B
			DO NOT SCALE DRAWING	SHEET 2 OF 2