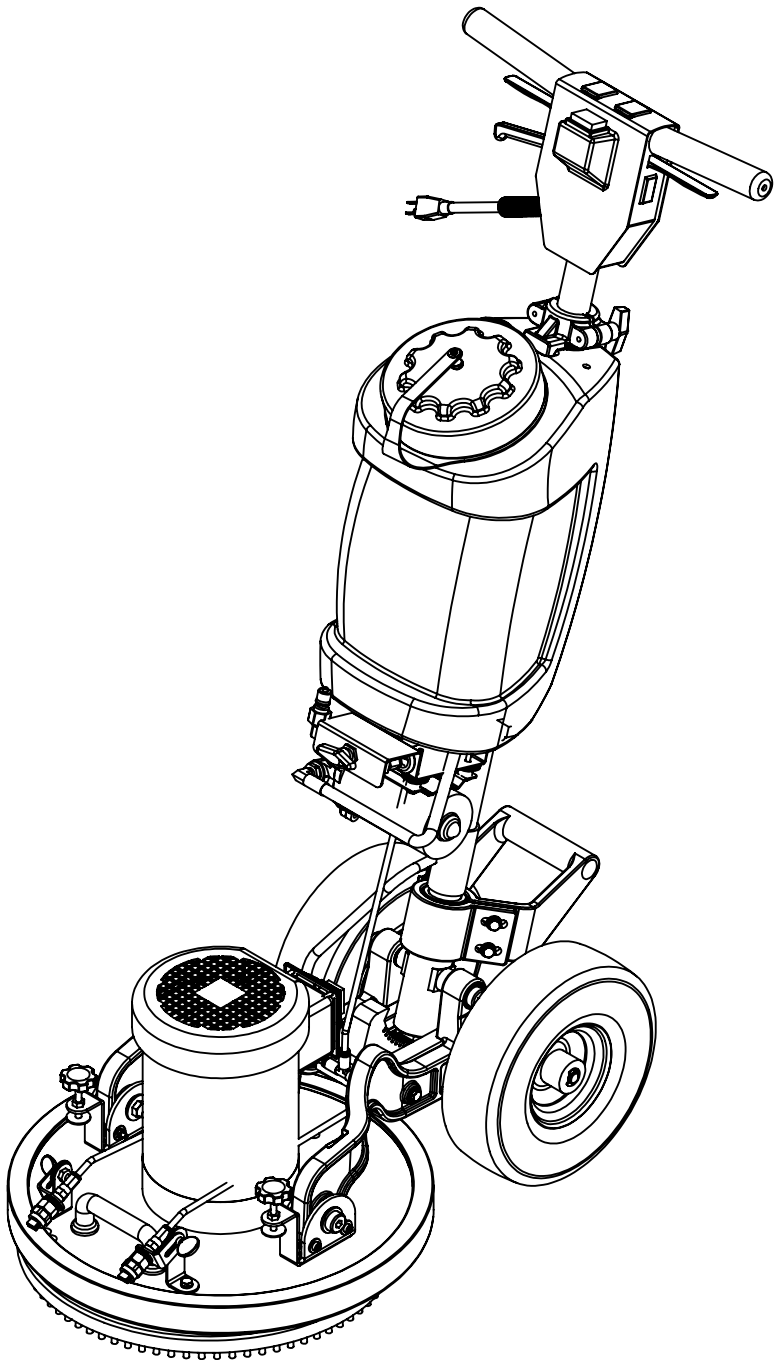


New & Reconditioned Equipment & Parts - www.southeasternequipment.net							
ITEM NO.	PART NO.	DESCRIPTION	QTY.	ITEM NO.	PART NO.	DESCRIPTION	QTY.
1	H151	bolt, 5/16-18 x 3/4" Long SHCS	4	63	B136	elbow, brass, 90 deg, 1/4" mpt x 1/4" mpt	1
2	H421	washer, 5/16" lock, s/s	6	64	B129	nipple, hex, 1/8" mpt x 1/8" mpt	2
3	H843	locking arc, handle adjustment	1	65	PH657-20	tubing, 1/4", nylon, blk	1
4	H555	plate, yoke, EC-17	1	66	B178	tee, brass, 1/4", push-in	1
5	H216	nut, lock, 1/4-20, nylon insert, s/s	5	67	PH634-12	sol hose, 1/4", silicone braided, clear	1
6	H210	washer, 1/4" flat, s/s	50	68	B152	elbow, brass, 90 deg, 1/4" barb x 1/4" mpt	1
7	H316	bolt, 1/4-20 x 1-1/2" hex head, s/s	6	69	B131	fitting, 1/4" barb x 1/8" FPT	1
8	H065	bushing, sleeve, 5/8 i.d. x 1.25" long	2	70	B105	bushing, brass, 3/8"mpt x 1/4"	3
9	H066	bolt, shoulder 5/8" x 1.25", 1/2-13 thrds	2	71	C324	pump, 60 PSI, no pressure switch, 4" cord, male schuko plug, 115v, 60hz	1
10	H427	washer, wave	2	72	H397	bracket, pump mount, ECO-17	1
11	H109	wheel, 10", foam filled	2	73	H164	grommet, 5/8" ID	4
12	H042	c-clip, 12mm, external	2	74	B143	street elbow, 90 degrees, 1/8"	2
13	H228	axle, 13.10" x .50" dia	1	75	B261	valve assy 3 way	1
14	H553	arm, left	1	76	B101	qd, brass, 1/4" m	1
15	P607	bushing, flange, .63" i.d. x .38" long	4	77	B646	adapter, 1/4" mpt x 1/8" fpt	1
16	H554	bracket, arm, EC-17	2	78	B217	check valve, 1/8" mpt x 1/8" fpt, 5 PSI	1
17	P606	bushing, flange, .63" i.d. x .25" long	4	79	B241	adapter, brass, 3/8" barb x 1/4"mpt	1
18	H212	flat washer, 9/16"ID x 1 1/16"OD, AN960-C916	5	80	PH612-24	tubing, PVC, 1/2" OD x 3/8" ID	1
19	H242	bolt, shoulder, 5/8" x 1.5", 1/2-13 threads	2	81	H915	clamp, shampoo tank	1
20	H252	bolt, shoulder, 1/4" x 1.5", 10-24 threads	4	82	P559	replacement tank, ST-4	1
21	H351	screw, 1/4-20 x 3/4", socket head, s/s	4	83	PH612-36	clear tubing, 1/2" OD x 3/8" ID, faucet fill	1
22	H213	washer, 1/4" lock, s/s	15	84	G031	gasket, 3.25" i.d. x 5.88" o.d.	1
23	C327A	MOTOR,1.5 HP, 1725 RPM, 115/230V, 60 HZ, ECO	1	85	P560	cap, 6", threaded	1
24	E518	switch, rocker, 2 position	1	86	G055	tether, cap, 6 1/2"	1
25	H297	screw, 8 x 1/2", hex head, zinc	4	87	H612	Washer, #8, flat regular	2
26	P523	plate, switch, bi-directional, ECO	1	88	H274	screw, 6 x 3/16, phil pan head, self-tapping	1
27	PH657-15	tubing, 1/4", nylon, blk	1	89	H178	faucet fill	1
28	H559	plate, ECO-17	1	90	H357	thumb screw, 1/4" - 20, shampoo tank	2
29	G123	BUMPER, ECO-17	1	91	G036	cap, 2.5" threaded, tethered	1
30	H327	washer, 3/8" lock, s/s	4	92	H148	washer, 5/16", narrow	3
31	H293	bolt, 3/8-16 x 1", hex head	4	93	H341	handle pivot, floor machine	1
32	H558C	weight, counter, #5 offset, key way, ECO	1	94	H705	bolt, giude, locking piston	1
33	H556A	bearing, offset, ECO	1	95	H844	locking piston, handle adj.	1
34	H203	bolt, 1/4-20 x 1-1/4" hex head, s/s	3	96	H157	spring, handle adjustment	1
35	P608	hub, pad driver, s/s, encap machine	1	97	H152	ring, retaining, internal 1 1/2"	1
36	G136D	driver, red tufted, ECO-17	1	98	H847	bushing, locking piston	1
37	H408	screw, 1/4-20 x 1", countersunk	4	99	H341B	set screw, 1/4-20 x 1/2", handle, pivot	2
38	H398	nut, hex, 5/8-18	1	100	H341A	set screw, 1/4-20 x 1/4", handle, pivot	2
39	H202	bolt, 1/4-20 x 3/4" hex head, s/s	4	101	E615	power cord, female nema 15 end, black, 52", 12/3. sjtw solid jacket	1
40	H485	handle, aluminum grip, black	1	102	H273	nut, kep, #10-32 zinc	2
41	B645A	filter, cap, ECO-17	2	103	H916	clip, cord, 5/16", nylon- BLACK	1
42	B645C	jet, ECO-17	2	104	P529	spacer, lever, handle adj.	1
43	B645D	filter, strainer, ECO-17	2	105	H159	cable, handle adj, floor machine	1
44	B645B	filter, body, ECO-17	2	106	H149	bolt, 5/16" shldr x 5/8" w/ 1/4-20 thrd	1
45	H384	washer, 3/8 flat, s/s	6	107	H839	lever, handle adj., floor machine	1
46	H560	L bracket, ECO-17	2	108	E384	power cord, end, 15.5", 14/3	1
47	H561	jet bracket, ECO-17	2	109	H144	strain relief, power cord, metal	1
48	H922	screw, thumb, 1/4-20 x 1/2"	2	110	H230	screw, 10-32 x 1/2" phil pan head, s/s	3
49	G052	washer, buna 1-1/8" od x 3/16" id	10	111	H167	switch, momentary	1
50	B153	coupling, 1/8" npt, light pattern	2	112	H640	washer, internal star, 3/8" zinc	1
51	B140	connector, 1/4" push-in x 1/8" mpt	3	113	H166	insulation, switch, floor machine	1
52	H403	nut, lock, 10-24, nylon insert	4	114	H855	lever, switch, floor machine	1
53	H322	nut, hex, 1/2-13, s/s	2	115	H160	spring, switch/lever	2
54	H328	clamp, hold down, weight, s/s, set of 2, ECO	2	116	E515	switch, rocker, 2 position	1
55	H552	arm, right	1	117	H255	switch cover, EC, floor machine	1
56	H007	screw, 10-32 x 2", phil pan head, s/s	4	118	P605	plug, lockout, ECO	2
57	B110	adapter, brass, 1/4" sw barb x 1/4" fpt, w/gasket	1	119	H161	roll pin, 1 3/4" x 1/8"	2
58	B103	elbow, 90 deg street, 1/4"mpt x 1/4" fpt	1	120	G040	grip, handle, vinyl	2
59	B107	nipple, hex, 1/4"mpt x 1/4"mpt	1	121	P524	plug, plastic, floor machine handle	1
60	B119	filter, strainer, 1/4"	1	122	H231	screw, 10-32 x 1" phil pan head, s/s	1
61	PH634-8	sol hose, 1/4", silicone braided, clear	1	123	H215	nut, hex, 1/4-20 s/s	1
62	B170	ferrule, 1/4" brass	4	124	H849	handle, floor machine	1

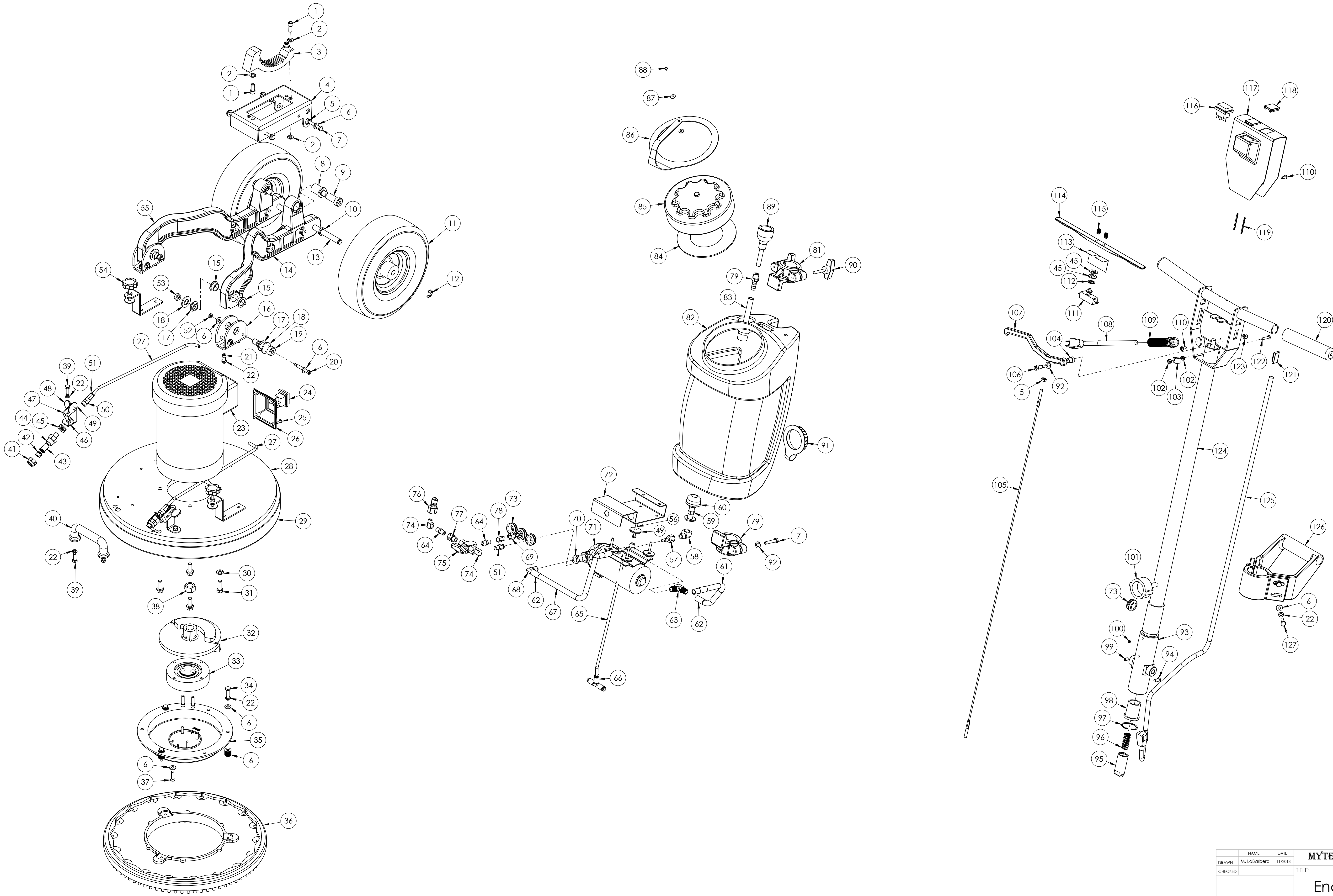
ITEM NO.	PART NO.	DESCRIPTION	QTY.
125	E575	power cord, schuko female end, 48", 18/3, black, sjtw solid jacket	1
126	H600	grip, 2" dia, wand	1
127	H342	bolt, 1/4-20 x 1" hex head, s/s	4

ITEMS NOT SHOWN

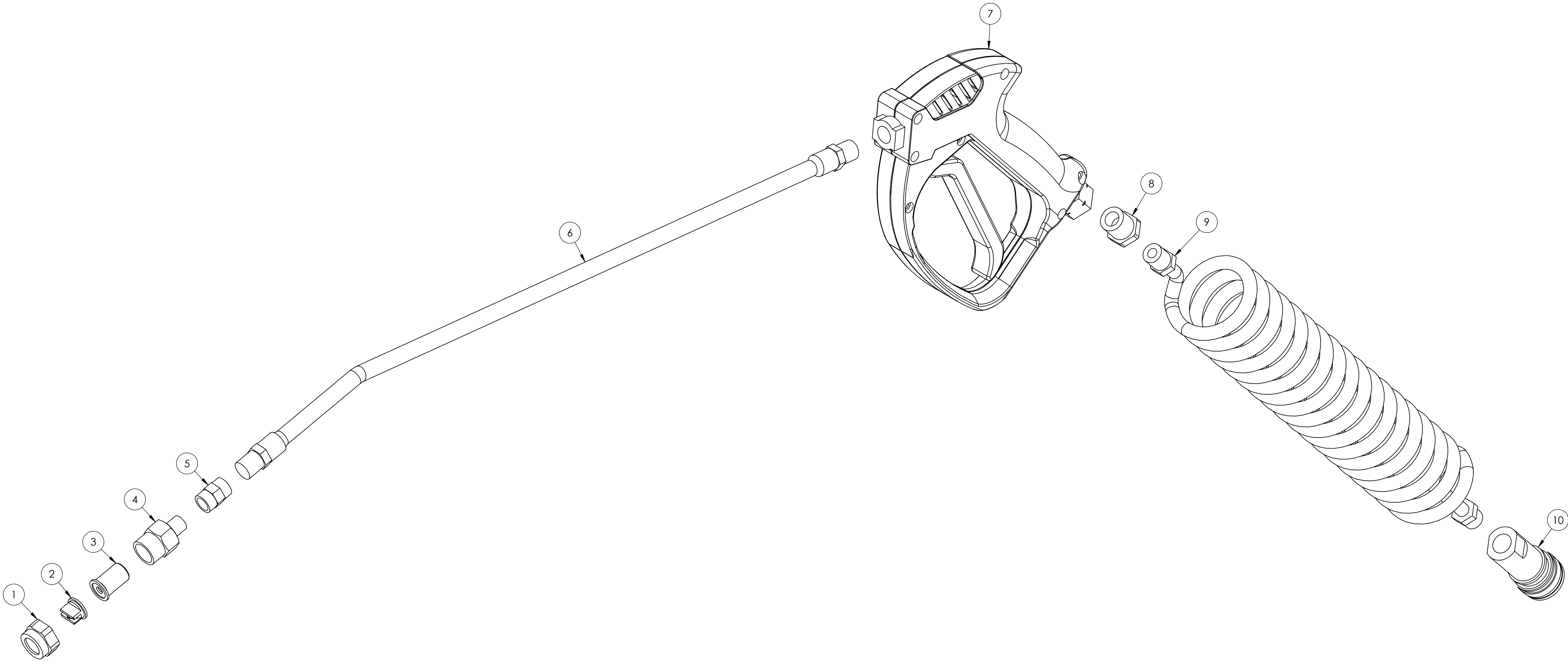
PART NO.	DESCRIPTION	QTY
E530	power cord, ext, blue lit, 50', 12/3	1
G127-19	bonnet, micro fiber, 19"	1
P568A	cord lock, s-type	1



	NAME	DATE	MYTEE PRODUCTS, INC. 858-679-1191
DRAWN	M.LaBarbera	11/2018	
CHECKED			
COMMENTS:			
PROPRIETARY AND CONFIDENTIAL THE INFORMATION CONTAINED IN THIS DRAWING IS THE SOLE PROPERTY OF MYTEE PRODUCTS, INC. ANY REPRODUCTION IN PART OR AS A WHOLE WITHOUT THE WRITTEN PERMISSION OF MYTEE PRODUCTS, INC. IS PROHIBITED.			TITLE: Encap PRO
SIZE	DWG. NO.	REV	
C	ECO-17 PRO	OD	
SCALE: 1:24	DO NOT SCALE DRAWING	SHEET 1 OF 4	

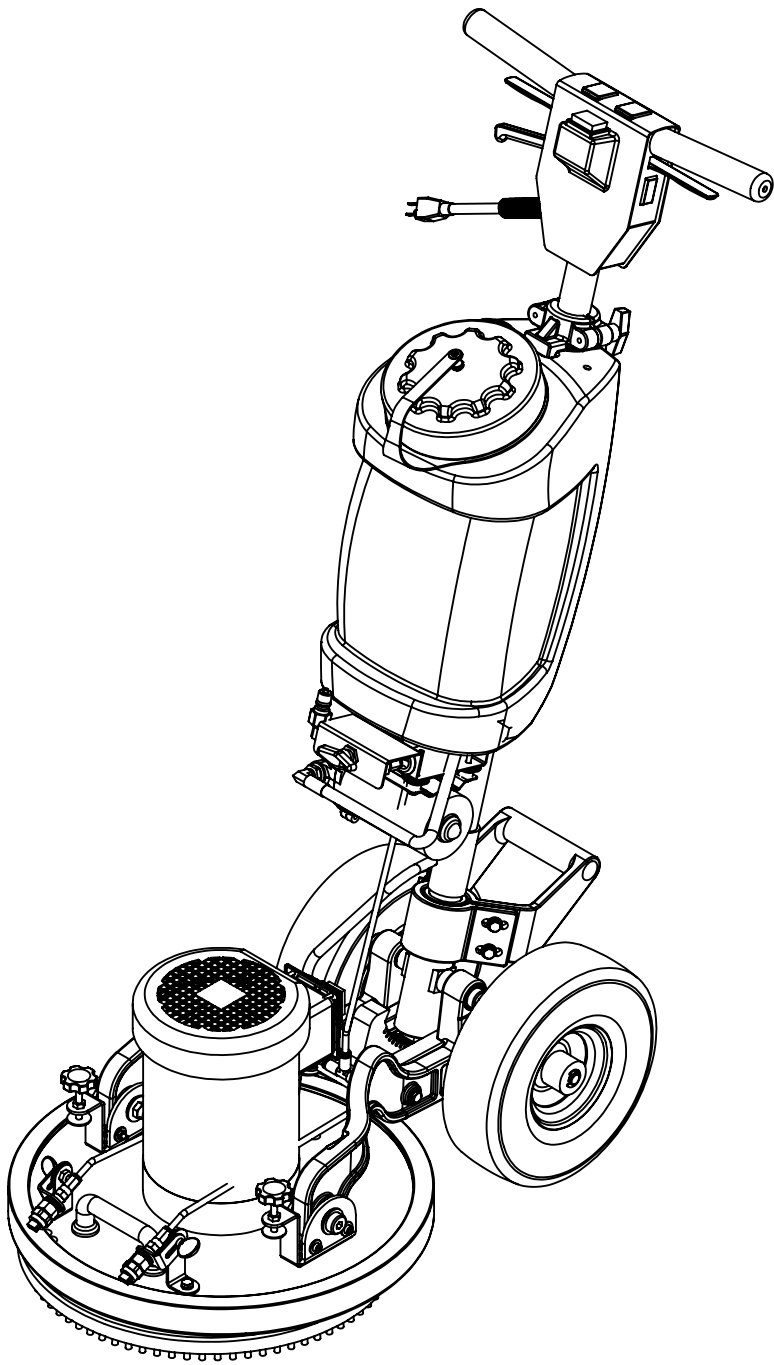


ITEM NO.	PART NO.	DESCRIPTION	QTY.
1	B645A	filter, cap, ECO-17	1
2	B645C	jet, ECO-17	1
3	B645D	filter, strainer, ECO-17	1
4	B645B	filter, body, ECO-17	1
5	B153	coupling, 1/8" npt, light pattern	1
6	H171	lance, s/s, 20' w/bend, inj sprayer	1
7	H540	gun, high pressure, (batt spray/ counter)	1
8	B105	bushing, brass, 3/8"mpt x 1/4"	1
9	PC-07	sol hose, black coil	1
10	B102	quick disconnect, 1/4" fqd x 1/4" fpt	1



	NAME	DATE	MYTEE PRODUCTS, INC. 858-679-1191		
DRAWN	M. LaBarbera	11/2018	TITLE:		
CHECKED			Encap PRO		
<small>PROPRIETARY AND CONFIDENTIAL THE INFORMATION CONTAINED IN THIS DRAWING IS THE SOLE PROPERTY OF MYTEE PRODUCTS, INC. ANY REPRODUCTION IN PART OR AS A WHOLE WITHOUT THE WRITTEN PERMISSION OF MYTEE PRODUCTS, INC. IS PROHIBITED.</small>			SIZE	DWG. NO.	REV
			D	ECO-17 PRO	OD
			SCALE: 1:24	DO NOT SCALE DRAWING	SHEET 3 OF 4

REVISIONS			
REV.	DESCRIPTION	DATE	APPROVED
OD	ORIGINAL DRAFT	3/2015	JFL



	NAME	DATE	MYTEE PRODUCTS, INC. 858-679-1191	
DRAWN	M.LaBarbera	11/2018		
CHECKED			TITLE:	
COMMENTS: PROPRIETARY AND CONFIDENTIAL THE INFORMATION CONTAINED IN THIS DRAWING IS THE SOLE PROPERTY OF MYTEE PRODUCTS, INC. ANY REPRODUCTION IN PART OR AS A WHOLE WITHOUT THE WRITTEN PERMISSION OF MYTEE PRODUCTS, INC. IS PROHIBITED.			Encap PRO	
			SIZE	REV
			C	OD
			DWG. NO.	
SCALE: 1:24			DO NOT SCALE DRAWING	SHEET 4 OF 4