

F	ITEM NO.	PART NO.	DESCRIPTION	QTY.	MSRP
	1	H135	Cuff-Lynx, 2" m cuff x 2" mpt	1	\$3.99 ea
	2	P583	vac tank, MyteeLite	1	\$159.99 ea
	3	H312	plate, connecting, MyteeLite	4	\$6.99 ea
	4	H230	screw, 10-32 x 1/2" phil pan head, s/s	28	\$0.99 ea
	5	G036	cap, 2.5" threaded, tethered	1	\$3.49 ea
	6	H423	plug, 7/8", black, heyco	2	\$0.99 ea
	7	H222	screw, 10-32 x 1-1/4" phil pan head, s/s	6	\$0.99 ea
E	8	H688-A	handle, MyteeLite	1	\$65.99 ea
	9	G055	tether, cap, 6 1/2"	1	\$12.99 ea
	10	P560	cap, 6", threaded	1	\$23.99 ea
	11	G031	gasket, 3.25" i.d. x 5.88" o.d.	1	\$6.99 ea
	12	G022	filter, foam, 2-3/8" x 1"	1	\$2.99 ea
	13	G021	screen, mesh filter, 2-3/8" dia	1	\$4.99 ea
	14	H203	bolt, 1/4-20 x 1-1/4" hex head, s/s	2	\$0.99 ea
	15	H210	washer, 1/4" flat, s/s	6	\$0.99 ea
D	16	H216	nut, lock, 1/4-20, nylon insert, s/s	2	\$0.99 ea
	17	H213	washer, 1/4" lock, s/s	2	\$0.99 ea
	18	H201	bolt, 1/4-20 x 1/2" hex head, zinc	2	\$0.99 ea
	19	H846B	cap, gallon jug, 1-5/8"	1	\$0.99 ea
	20	H379	bracket, front, small	1	\$3.99 ea
	21	B119	filter, strainer, 1/4"	1	\$3.99 ea
	22	P584	sol tank, MyteeLite	1	\$149.99 ea
	23	G004	gasket, vacuum motor	2	\$8.99 ea
C	24	C302P	vac motor, 3 stage	1	\$148.99 ea
	25	H178	faucet fill	1	\$10.99 ea
	26	B241	adapter, brass, 3/8" barb x 1/4"mpt	1	\$1.99 ea
	27	PH612-60	clear tubing, 1/2" OD x 3/8" ID, faucet fill	1	\$1.99 ft
	28	H681	caster, 2", black hub, gray tread	2	\$8.99 ea
	29	H273	nut, kep, #10-32 zinc	15	\$0.99 ea
	30	P585	base, MyteeLite	1	\$89.99 ea
	31	H212	flat washer, 9/16"ID x 1 1/16"OD	4	\$0.99 ea
B	32	H427	washer, wave, axle	2	\$1.49 ea
	33	H279	wheel, 6"	2	\$25.99 ea
	34	H042	c-clip, 12mm, external	2	\$0.99 ea
	35	H254	washer, axle, cut 1/2" id	2	\$0.99 ea
	36	H241	axle, 13.63" x .50" dia	1	\$15.99 ea
	37	H029	plastite screw, 10 x 1/2"	4	\$0.99 ea
	38	E515	switch, rocker, 2 position	3	\$13.99 ea
	39	E532	power cord, end, 25', 14/3	1	\$44.99 ea
A	40	H445	fitting, strain relief, w/ spring, 1/2" npt	1	\$8.99 ea
	41	H310	plate, switch, MyteeLite, 3 hole	1	\$6.99 ea
	42	H221	nut, lock, 1/2" steel	1	\$1.99 ea
	43	H486	latch, front	1	\$13.99 ea
	44	G068	bumper, 7/8" x 1/4" head	2	\$1.99 ea
	45	H256	screw, 10-32 x 3/4" phil pan head, zinc	2	\$0.99 ea
	46	B136	elbow, brass, 90 deg, 1/4" mpt x 1/4" mpt	3	\$4.99 ea
	47	AH157	hose, 3/8" x9" (OAL), f x fsw	1	\$25.99 ea
A	48	B105	bushing, brass, 3/8"mpt x 1/4"	2	\$3.19 ea
	49	C305	pump, 120 psi, 115V	1	\$151.99 ea
	50	B170	ferrule, 1/4" brass	2	\$0.99 ea
	51	PH634-13	sol hose, 1/4" silicone braided, clear	1	\$6.49 ft
	52	B110	adapter, brass, 1/4" sw barb x 1/4" fpt, w/gasket	1	\$3.99 ea
	53	B107	nipple, brass, 1/4"m, hex	2	\$3.19 ea
	54	B103	elbow, brass, 90 deg, 1/4"mpt x 1/4" fpt	1	\$4.49 ea
	55	B207	elbow, brass, 90 deg, 1/4" fpt x 1/4" fpt	2	\$5.99 ea
	56	B108	valve, brass, 1/4" check	1	\$13.99 ea

F

E

D

C

B

A

F

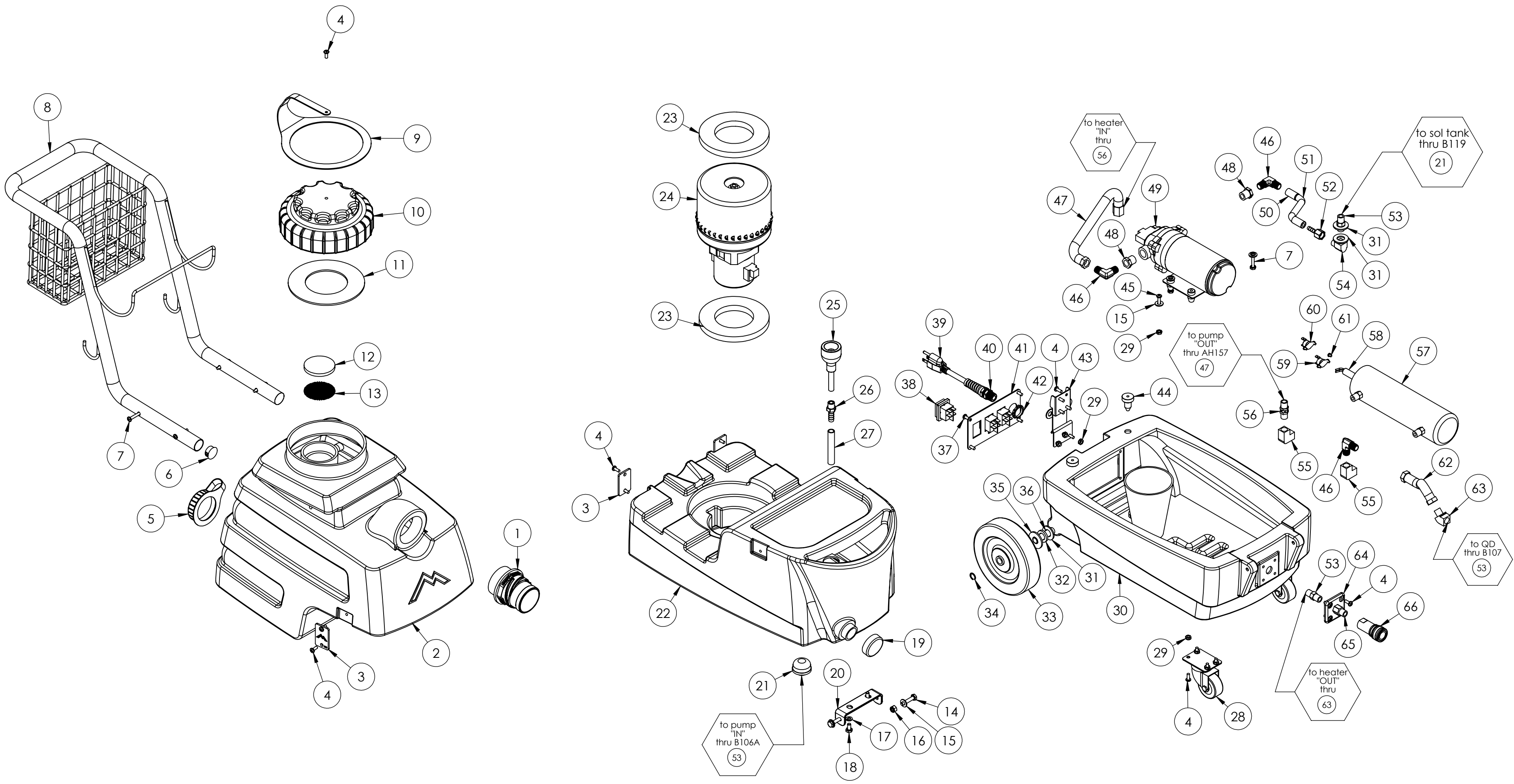
E

D

C

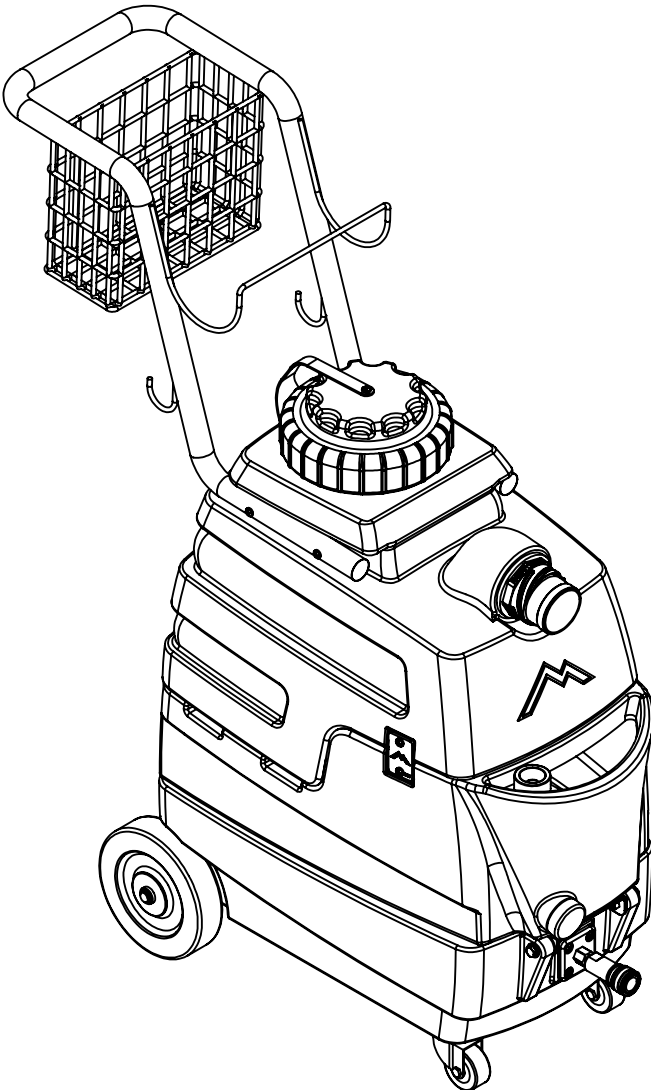
B

A



	NAME	DATE	MYTEE PRODUCTS, INC. 858-679-1191	
DRAWN	M.LaBarbera	1/2014		
CHECKED			TITLE: MyteeLite II (2014)	
COMMENTS:				
PROPRIETARY AND CONFIDENTIAL THE INFORMATION CONTAINED IN THIS DRAWING IS THE SOLE PROPERTY OF MYTEE PRODUCTS, INC. ANY REPRODUCTION IN PART OR AS A WHOLE WITHOUT THE WRITTEN PERMISSION OF MYTEE PRODUCTS, INC. IS PROHIBITED.			SIZE	REV
			DWG. NO.	
			C 8070	E
			SCALE: 1:24	DO NOT SCALE DRAWING
			SHEET 2 OF 3	

REVISIONS			
REV.	DESCRIPTION	DATE	APPROVED
OD	ORIGINAL DRAFT	1/3/2014	JFL
A	G004A REPLACED WITH G004	3/19/2014	ML
B	ADDED H212 AND B170	3/19/2014	ML
C	ADDED H029	6/18/2014	ML
D	ADDED H423, B110	7/11/2014	ML
E	ADDED B241, B111	4/15/2015	ML



	NAME	DATE	MYTEE PRODUCTS, INC. <small>858-679-1191</small>	
DRAWN	M.LaBarbera	1/2014		
CHECKED			TITLE: MyteeLite II (2014)	
COMMENTS: PROPRIETARY AND CONFIDENTIAL <small>THE INFORMATION CONTAINED IN THIS DRAWING IS THE SOLE PROPERTY OF MYTEE PRODUCTS, INC. ANY REPRODUCTION IN PART OR AS A WHOLE WITHOUT THE WRITTEN PERMISSION OF MYTEE PRODUCTS, INC. IS PROHIBITED.</small>			SIZE C	DWG. NO. 8070
			SCALE: 1:24	DO NOT SCALE DRAWING
			SHEET 3 OF 3	REV E