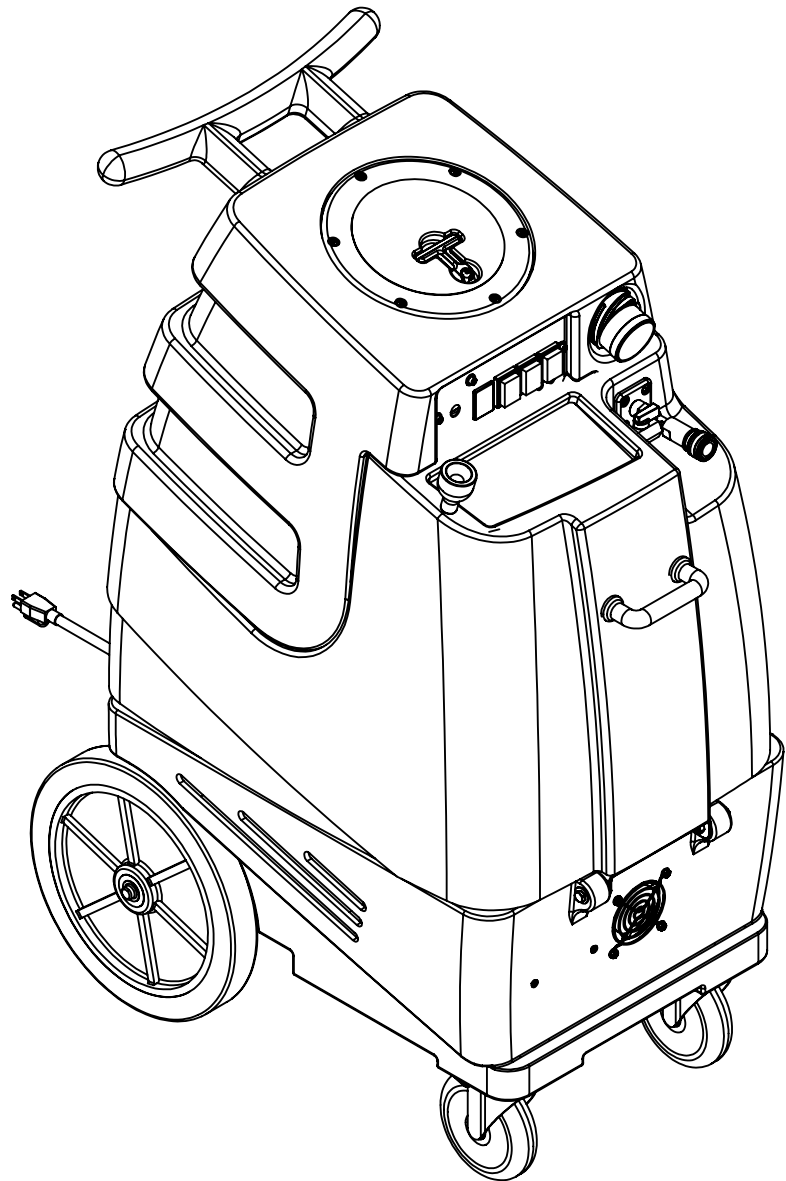


| 8 | | 7 | | 6 | |
|----------|----------|------------------------------------------------|--|------|-------------|
| ITEM NO. | PART NO. | DESCRIPTION | | QTY. | MSRP |
| 1 | C317 | fan, cooling, 115V | | 1 | \$21.49 ea |
| 2 | H343 | screw, #10 x 5/8" hex head, zinc | | 12 | \$0.99 ea |
| 3 | H296 | guard, cooling fan, wire | | 3 | \$2.99 ea |
| 4 | H186 | screw, 10-32 x 3/4, phil flat full thread | | 2 | \$0.99 ea |
| 5 | E370 | controller, water level, dual pump or vac | | 1 | \$94.99 ea |
| 6 | H273 | nut, kep, #10-32 zinc | | 8 | \$0.99 ea |
| 7 | H033 | plastite screw, 1/4 x 3/4" | | 8 | \$2.99 ea |
| 8 | H666 | caster, 5", Black hub & gray tread | | 2 | \$23.19 ea |
| 9 | H371 | axle, 18.25" x .50" dia | | 1 | \$9.99 ea |
| 10 | H254 | washer, axle, cut 1/2" id | | 4 | \$0.99 ea |
| 11 | H251 | wheel, 12" | | 2 | \$41.99 ea |
| 12 | H219 | cap, axle, 1/2" | | 2 | \$0.99 ea |
| 13 | H221 | nut, lock, 1/2" steel | | 1 | \$1.99 ea |
| 14 | H220 | fitting, strain relief, cord | | 1 | \$3.19 ea |
| 15 | E550 | power cord, pigtail, 30", 12/3, black | | 1 | \$11.49 ea |
| 16 | P731 | base, speedster | | 1 | \$141.99 ea |
| 17 | H202 | bolt, 1/4-20 x 3/4" hex head, s/s | | 6 | \$0.99 ea |
| 18 | PH615-26 | sol hose, 1/2" kuri 100psi | | 1 | \$8.99/ft |
| 19 | H347 | clamp, hose, 5/16-29/32 | | 4 | \$1.99 ea |
| 20 | B160 | adapter, brass, 1/2" barb x 3/8" fsw, ball end | | 1 | \$3.49 ea |
| 21 | B186 | elbow, brass, 90 deg, 3/8"mpt x 3/8" fmpt | | 1 | \$8.99 ea |
| 22 | AH120 | sol hose, 28" x 1/4", 1/4 fpt | | 1 | \$35.49 ea |
| 23 | B136 | elbow, brass, 90 deg, 1/4" mpt x 1/4" mpt | | 1 | \$4.99 ea |
| 24 | B105 | bushing, brass, 3/8"mpt x 1/4" | | 1 | \$3.19 ea |
| 25 | H299 | washer, 11/16"id x 1-1/2"od x .075, s/s | | 4 | \$0.99 ea |
| 26 | H222 | screw, 10-32 x 1-1/4" phil pan head, s/s | | 4 | \$0.99 ea |
| 27 | C322D | pump, 220psi, diaphragm,115V | | 1 | \$208.99 ea |
| 28 | B172 | elbow, brass, 90 deg, 1/2" barb x 3/8"mpt | | 1 | \$9.49 ea |
| 29 | H912 | bracket, rear, fb/spy | | 1 | \$9.99 ea |
| 30 | H770 | bolt, 1/4-20 x 1/2" serrated hex flange, zinc | | 4 | \$0.99 ea |
| 31 | H307 | washer, star, 1/4" steel zinc | | 2 | \$0.99 ea |
| 32 | G052 | washer, buna 1-1/8" od x 3/16" id | | 6 | \$1.99 ea |
| 33 | H211 | washer, 1/4"id x 1"od, flat, s/s | | 6 | \$0.99 ea |
| 34 | H124 | Cuff-Lynx, 2" mpt x 2" female cuff | | 2 | \$3.99 ea |
| 35 | H194 | coupler, 2" dia x 2.5" length, s/s | | 2 | \$10.00 ea |
| 36 | H217 | clamp, hose, 2-1/4 dia | | 4 | \$1.49 ea |
| 37 | PH628-24 | vac hose, 2", wire reinforced | | 1 | \$8.99/ft |
| 38 | H213 | washer, 1/4" lock, s/s | | 10 | \$0.99 ea |
| 39 | H215 | nut, hex, 1/4-20 s/s | | 2 | \$0.99 ea |
| 40 | H178 | faucet fill | | 1 | \$10.99 ea |
| 41 | G018 | cover, sol tank (sp) | | 1 | \$12.99 ea |
| 42 | P732 | sol tank, speedster | | 1 | \$141.99 ea |
| 43 | H768 | bolt, 1/4-20 x 3/4" serrated hex flange, zinc | | 2 | \$0.99 ea |
| 44 | B107 | nipple, brass, 1/4"m, hex | | 3 | \$3.19 ea |
| 45 | H484 | plate, mounting, QD | | 1 | \$4.99 ea |
| 46 | H256 | screw, 10-32 x 3/4" phil pan head, zinc | | 4 | \$0.99 ea |
| 47 | B142 | coupling, brass, 1/4" fpt x 1/4" fpt | | 1 | \$4.49 ea |
| 48 | B135 | tee, brass, 1/4" mpt | | 1 | \$5.49 ea |
| 49 | B102 | qd, brass, 1/4" f | | 1 | \$17.99 ea |
| 50 | B656 | ball valve, 1/4" | | 1 | \$13.49 ea |
| 51 | B109 | adapter, brass, 1/4" barb x 1/4" mpt | | 1 | \$1.99 ea |
| 52 | PH634-36 | sol hose, 1/4", silicone braided, clear | | 1 | \$6.49 ft |

| 5 | | 4 | | 3 | |
|----------|-----------|----------------------------------------------|--|------|-------------|
| ITEM NO. | PART NO. | DESCRIPTION | | QTY. | MSRP |
| 53 | H485 | handle, breeze and dx | | 1 | \$6.99 ea |
| 54 | H210 | washer, 1/4" flat, s/s | | 14 | \$0.99 ea |
| 55 | H378 | bracket, front hinge, sp/fb | | 1 | \$8.99 ea |
| 56 | H216 | nut, lock, 1/4-20, nylon insert, s/s | | 2 | \$0.99 ea |
| 57 | B119A | filter, strainer, 1/2" | | 1 | \$6.49 ea |
| 58 | B210 | bushing, brass, 1/2"mpt x 3/8" fpt, hex | | 1 | \$2.49 ea |
| 59 | B216 | nipple, brass, 3/8" x close | | 1 | \$1.99 ea |
| 60 | H226 | spout, drain, 45 degree | | 1 | \$3.19 ea |
| 61 | H225 | valve, drain, 1-1/2" | | 1 | \$20.99 ea |
| 62 | P733 | vac tank, speedster | | 1 | \$190.99 ea |
| 63 | H314 | nut, lock, 1-1/2", steel | | 2 | \$1.99 ea |
| 64 | PH633-2.5 | pipe, pvc, 1-1/2" | | 4 | \$4.99 ft |
| 65 | PH633-4 | pipe, pvc, 1-1/2" | | 2 | \$4.99/ft |
| 66 | P502 | adapter, 1.5" pvc, fslip x fslip | | 2 | \$5.00 ea |
| 67 | G021 | screen, mesh filter, 2-3/8" dia | | 2 | \$4.99 ea |
| 68 | G022 | filter, foam, 2-3/8" x 1" | | 2 | \$2.99 ea |
| 69 | PH633-1 | pipe, pvc, 1-1/2" | | 2 | \$4.99 ft |
| 70 | P503 | adapter, 1.5" pvc, 45 deg, fslip x fslip | | 4 | \$3.29 ea |
| 71 | P520 | adapter, pvc, 1-1/2" mpt x 1-1/2" fms | | 2 | \$2.99 ea |
| 72 | G090 | lid, vac tank, clear, 7" | | 1 | \$36.99 ea |
| 73 | H304 | screw, #8 x 5/8 phil oval, s/s | | 6 | \$0.99 ea |
| 74 | G091 | gasket, 7", vac lid | | 1 | \$11.99 ea |
| 75 | A926 | elbow, inlet assembly 2" | | 1 | \$15.99 ea |
| 76 | G083 | gasket, 2" inlet | | 1 | \$2.49 ea |
| 77 | H135 | Cuff-Lynx, 2" m cuff x 2" mpt | | 1 | \$3.99 ea |
| 78 | E515 | switch, rocker, 2 position | | 3 | \$13.99 ea |
| 79 | P967A | plug | | 1 | \$1.99 ea |
| 80 | H389 | screw, 10-32 x 1/2" SHCS, alloy | | 3 | \$0.99 ea |
| 81 | H612 | Washer, #8, flat regular | | 3 | \$0.99 ea |
| 82 | H348 | plate, switch, 1000DX-200 | | 1 | \$6.99 ea |
| 83 | B156 | nut, 1/4" npt | | 1 | \$1.99 ea |
| 84 | H212 | flat washer, 9/16"ID x 1 1/16"OD, AN960-C916 | | 1 | \$0.99 ea |
| 85 | E373 | level switch, vacuum shut-off, rear threads | | 1 | \$13.99 ea |
| 86 | B207 | elbow, brass, 90 deg, 1/4" fpt x 1/4" fpt | | 1 | \$5.99 ea |
| 87 | H390A | bracket, "L" | | 2 | \$6.99 ea |
| 88 | H034 | plastite screw, 1/4 x 1" | | 4 | \$2.99 ea |
| 89 | H096 | bolt, hex, 1/4-20 x 4", zinc Finish | | 6 | \$0.99 ea |
| 90 | H503 | vac support, 3-stage, 3.25", no threads | | 6 | \$3.99 ea |
| 91 | C302LA | vac motor, 3 stage, low amp | | 2 | \$139.99 ea |
| 92 | G004 | gasket, vac motor - Speedster | | 2 | \$8.99 ea |

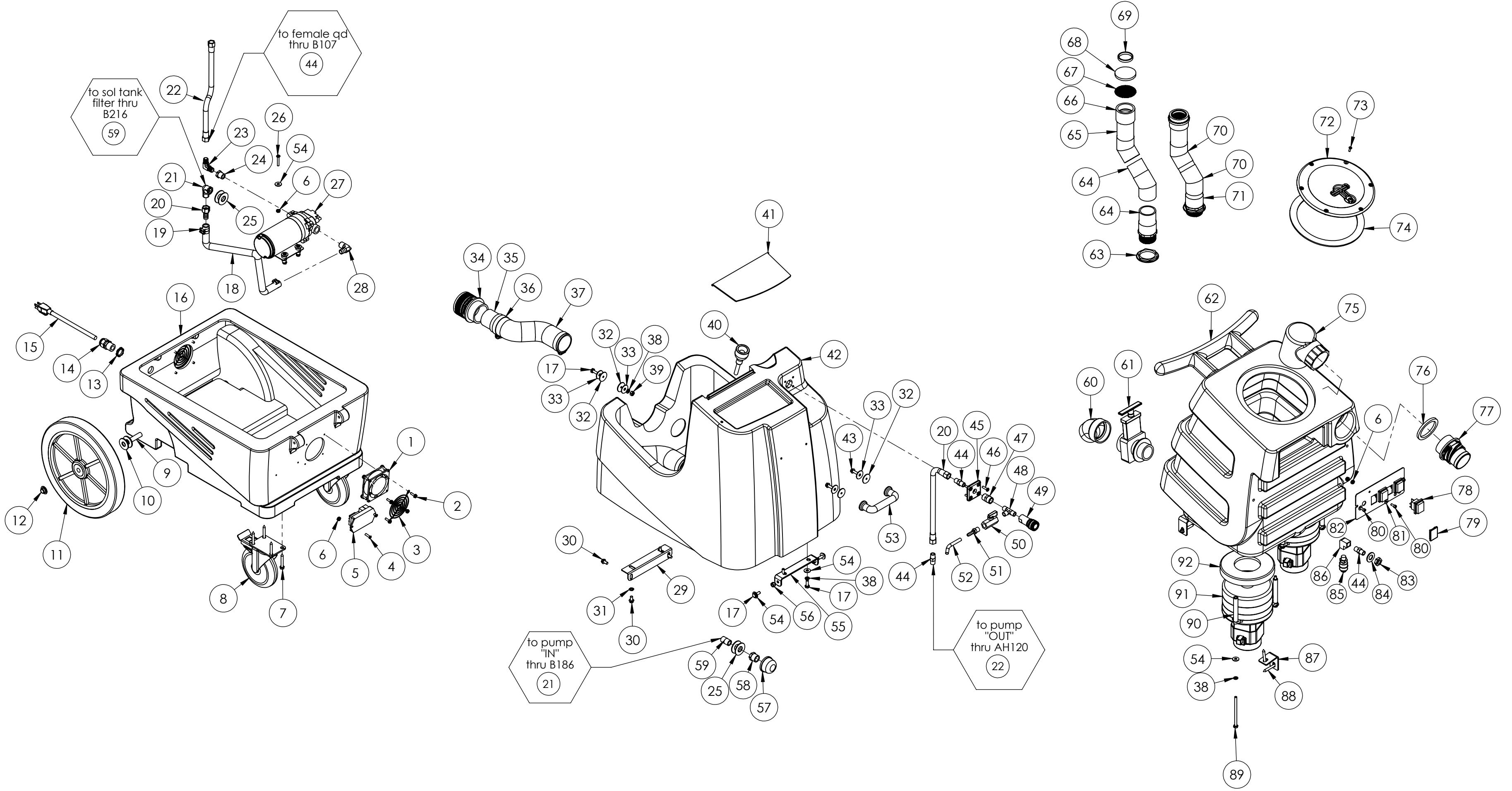
ITEMS NOT SHOWN

| PART NO. | DESCRIPTION | QTY | MSRP |
|----------|----------------------------------------------|-----|------------|
| G008 | piglet filter | 1 | \$6.29 pak |
| G085 | gasket, strip, 3/4" x 36" x 1/8" | 1 | \$4.99 ea |
| H375 | hanger, wire formed, hose | 1 | \$10.99 ea |
| H230 | screw, 10-32 x 1/2" phil pan head, s/s | 2 | \$0.99 ea |
| H141 | Cuff-Lynx, 2" x 1.5" reducer | 1 | \$3.99 ea |
| H110 | Cuff-Lynx, 2" hose x 2" fem swivel Cuff-Lynx | 1 | \$3.99 ea |
| E530 | power cord, ext 50', 12/3 black | 1 | \$74.99 ea |



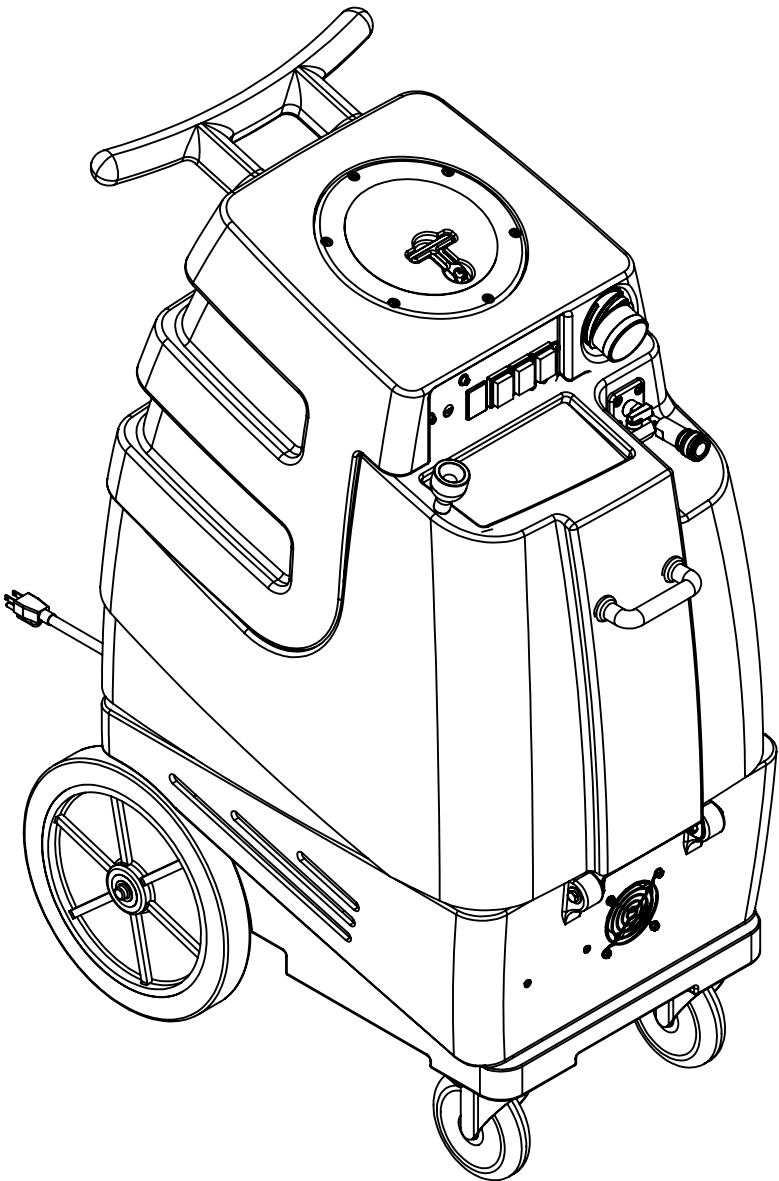
| | | | | |
|-----------------------------------------------------------------------------------------------------------------------------------------------------------------------------------------------------------------------------------------------------------------------------|--------------|--------|------------------------------------------------------------|--|
| | NAME | DATE | MYTEE PRODUCTS, INC. <small>858-679-1191</small> | |
| DRAWN | M. LaBarbera | 8/2013 | | |
| CHECKED | | | TITLE: | |
| COMMENTS: PROPRIETARY AND CONFIDENTIAL <small>THE INFORMATION CONTAINED IN THIS DRAWING IS THE SOLE PROPERTY OF MYTEE PRODUCTS, INC.. ANY REPRODUCTION IN PART OR AS A WHOLE WITHOUT THE WRITTEN PERMISSION OF MYTEE PRODUCTS, INC. IS PROHIBITED.</small> | | | | |
| | | | | |
| | | | | |
| | | | | |
| SCALE: 1:48 | | | DO NOT SCALE DRAWING | |
| | | | | |
| SHEET 1 OF 3 | | | | |
| | | | | |

| | | |
|----------|-------------------|----------|
| SIZE | DWG. NO. | REV |
| C | 1000DX-200 | A |



| | | | | |
|-------------------------------------------------------------------------------------------------------------------------------------------------------------------------------------------------------------------------------------------------------|-------------|-------------------------|--------------------------------------|-----|
| NAME | | DATE | MYTEE PRODUCTS, INC. 858-679-1191 | |
| DRAWN | M.LaBarbera | 8/2013 | | |
| CHECKED | | | TITLE: | |
| COMMENTS: | | | speedster | |
| PROPRIETARY AND CONFIDENTIAL THE INFORMATION CONTAINED IN THIS DRAWING IS THE SOLE PROPERTY OF MYTEE PRODUCTS, INC. ANY REPRODUCTION IN PART OR AS A WHOLE WITHOUT THE WRITTEN PERMISSION OF MYTEE PRODUCTS, INC. IS PROHIBITED. | | | SIZE | REV |
| | | | C 1000DX-200 | A |
| SCALE: 1:48 | | DO NOT SCALE DRAWING | SHEET 2 OF 3 | |

| REVISIONS | | | |
|-----------|----------------------|--------|----------|
| REV. | DESCRIPTION | DATE | APPROVED |
| OD | ORIGINAL DRAFT | - | JFL |
| A | REPLACED G003 W G022 | 8/2013 | JFL |



| | | | | |
|----------------------------------------------------------------------------------------------------------------------------------------------------------------------------------------------------------------------------------------------------------------------------|--------------|--------|------------------------------------------------------------|----------------------|
| | NAME | DATE | MYTEE PRODUCTS, INC. <small>858-679-1191</small> | |
| DRAWN | M. LaBarbera | 8/2013 | | |
| CHECKED | | | TITLE: | |
| COMMENTS: PROPRIETARY AND CONFIDENTIAL <small>THE INFORMATION CONTAINED IN THIS DRAWING IS THE SOLE PROPERTY OF MYTEE PRODUCTS, INC. ANY REPRODUCTION IN PART OR AS A WHOLE WITHOUT THE WRITTEN PERMISSION OF MYTEE PRODUCTS, INC. IS PROHIBITED.</small> | | | speedster | |
| | | | SIZE | DWG. NO. |
| | | | C | 1000DX-200 |
| | | | SCALE: 1:48 | DO NOT SCALE DRAWING |
| | | | SHEET 3 OF 3 | |
| | | | REV | A |