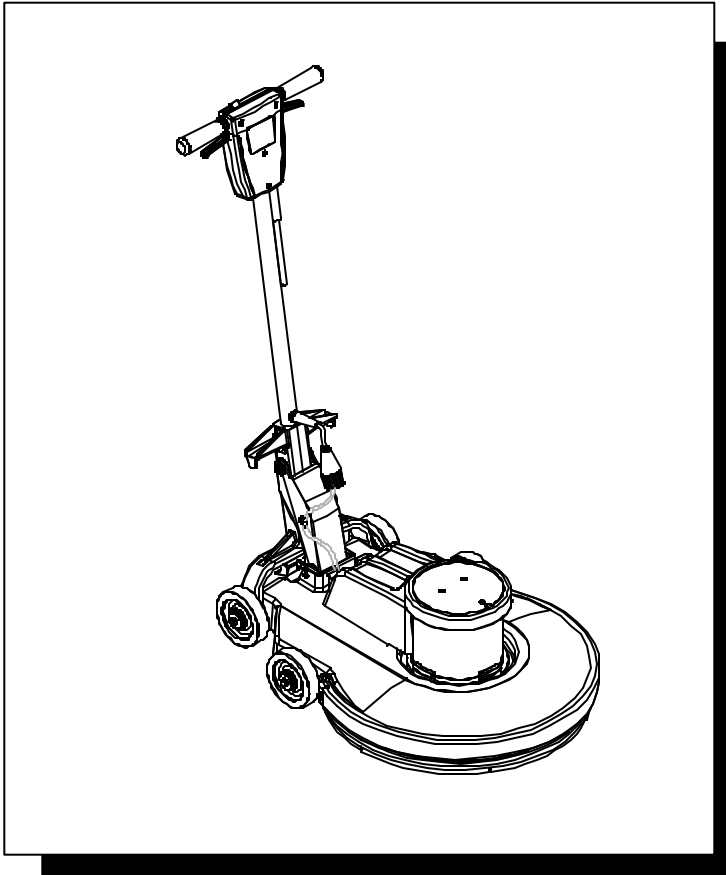




## HIGH SPEED BURNISHER



Operating Instructions (ENG)

**MODELS: MB2000**

**QUEST®** ... for Continuous Improvement.  
Windsor's Quality Management System is Certified ISO 9001.



---

*Read these instructions before using the machine*



98883 10/19/02

## **MACHINE DATA LOG/OVERVIEW**

**MODEL** \_\_\_\_\_

**DATE OF PURCHASE** \_\_\_\_\_

**SERIAL NUMBER** \_\_\_\_\_

### **YOUR DEALER**

**Name:** \_\_\_\_\_

**Address:** \_\_\_\_\_

**Phone Number:** \_\_\_\_\_

## TABLE OF CONTENTS

|  |          |
|--|----------|
| <i>Machine Data Log/Overview. ....</i> | <i>2</i> |
| <i>Table of Contents .....</i>         | <i>3</i> |

### HOW TO USE THIS MANUAL

|                                    |            |
|------------------------------------|------------|
| <i>How to use this Manual.....</i> | <i>1-1</i> |
|------------------------------------|------------|

### SAFETY

|   |            |
|---|------------|
| <i>Important Safety Instructions.....</i> | <i>2-1</i> |
| <i>Hazard Intensity Level. ....</i>       | <i>2-2</i> |
| <i>Grounding Instructions.....</i>        | <i>2-3</i> |

### OPERATION

|                                       |            |
|---------------------------------------|------------|
| <i>Technical Specifications .....</i> | <i>3-1</i> |
| <i>Handle Installation.....</i>       | <i>3-2</i> |
| <i>Operation.....</i>                 | <i>3-3</i> |
| <i>Pad Driver Installation.....</i>   | <i>3-3</i> |

### MAINTENANCE

|                                     |            |
|-------------------------------------|------------|
| <i>Machine Troubleshooting.....</i> | <i>4-1</i> |
| <i>Wiring Diagram/Notes .....</i>   | <i>4-2</i> |

### GROUP PARTS LIST

|                                   |             |
|-----------------------------------|-------------|
| <i>Deck Group.....</i>            | <i>5-1</i>  |
| <i>Handle Group.....</i>          | <i>5-3</i>  |
| <i>Lower Handle Group.....</i>    | <i>5-5</i>  |
| <i>Motor Group.....</i>           | <i>5-7</i>  |
| <i>Pad Driver Group.....</i>      | <i>5-9</i>  |
| <i>Wiring Group.....</i>          | <i>5-11</i> |
| <i>Suggested Spare Parts.....</i> | <i>5-13</i> |
| <i>Warranty .....</i>             | <i>5-14</i> |

## HOW TO USE THIS MANUAL

This manual contains the following sections:

- HOW TO USE THIS MANUAL
- SAFETY
- OPERATIONS
- MAINTENANCE
- PARTS LIST

The HOW TO USE THIS MANUAL section will tell you how to find important information for ordering correct repair parts.

Parts may be ordered from authorized Windsor dealers. When placing an order for parts, the machine model and machine serial number are important. Refer to the MACHINE DATA box which is filled out during the installation of your machine. The MACHINE DATA box is located on the inside of the front cover of this manual.

|                               |
|-------------------------------|
| MODEL _____                   |
| DATE OF PURCHASE _____        |
| SERIAL NUMBER _____           |
| SALES REPRESENTATIVE # _____  |
| DEALER NAME _____             |
| OPERATIONS GUIDE NUMBER _____ |
| PUBLISHED _____               |

The SAFETY section contains important information regarding hazard or unsafe practices of the machine. Levels of hazards is identified that could result in product or personal injury, or severe injury resulting in death.

The OPERATIONS section is to familiarize the operator with the operation and function of the machine.

The MAINTENANCE section contains preventive maintenance to keep the machine and its components in good working condition.

The PARTS LIST section contains assembled parts illustrations and corresponding parts list. The parts lists include a number of columns of information:

- **REF** – column refers to the reference number on the parts illustration.
- **PART NO.** – column lists the part number for the part.
- **QTY** – column lists the quantity of the part used in that area of the machine.
- **DESCRIPTION** – column is a brief description of the part.
- **SERIAL NO. FROM** – column indicates the first machine the part number is applicable to. When the machine design has changed, this column will indicate serial number of applicable machine. The main illustration shows the most current design of the machine. The boxed illustrations show older designs.
- **NOTES** – column for information not noted by the other columns.

*NOTE: If a service or option kit is installed on your machine, be sure to keep the KIT INSTRUCTIONS which came with the kit. It contains replacement parts numbers needed for ordering future parts.*

## **IMPORTANT SAFETY INSTRUCTIONS**

**When using an electrical appliance, basic precaution must always be followed, including the following:**

**READ ALL INSTRUCTIONS BEFORE USING THIS MACHINE.**



**To reduce the risk of fire, electric shock, or injury:**

**Use only** indoors. Do not use outdoors or expose to rain.

**Use only** as described in this manual. Use only manufacturer's recommended components and attachments.

If the machine is **not working properly**, has been dropped, damaged, left outdoors, or dropped into water, return it to an authorized service center.

**Do not** operate the machine with any openings blocked. Keep openings free of debris that may reduce airflow.

**Machine can cause a fire** when operating near flammable vapors or materials. Do not operate this machine near flammable fluids, dust or vapors.

**This machine is suitable for commercial use, for example in hotels, schools, hospitals, factories, shops and offices for more than normal housekeeping purposes.**

Maintenance and repairs **must be done** by qualified personnel.

**During operation**, attention shall be paid to other persons, especially children.

**The machine shall only** be operated by instructed and authorized persons.

**When leaving unattended**, unplug the machine.

**Do not** handle the plug or machine with wet hands.

**Do not** unplug machine by pulling on cord. To unplug, grasp the plug, not the cord.

**Do not** use with damaged cord or plug. Follow all instructions in this manual concerning grounding the machine.

**Do not** pull or carry by cord, use cord as a handle, close a door on cord, or pull cord around sharp edges or corners.

**Do not** pull/run machine over cord. **Keep** cord away from heated surfaces.

Connect to a **properly** grounded outlet. See Grounding Instructions.

## **SAVE THESE INSTRUCTIONS**

## **HAZARD INTENSITY LEVEL**

The following symbols are used throughout this guide as indicated in their descriptions:

### **HAZARD INTENSITY LEVEL**

There are three levels of hazard intensity identified by signal words -**WARNING** and **CAUTION** and **FOR SAFETY**. The level of hazard intensity is determined by the following definitions:

#### **! WARNING**

**WARNING** - Hazards or unsafe practices which COULD result in severe personal injury or death.

#### **! CAUTION**

**CAUTION** - Hazards or unsafe practices which could result in minor personal injury or product or property damage.

#### ***FOR SAFETY: To Identify actions which must be followed for safe operation of equipment.***

Report machine damage or faulty operation immediately. Do not use the machine if it is not in proper operating condition. Following is information that signals some potentially dangerous conditions to the operator or the equipment. Read this information carefully. Know when these conditions can exist. Locate all safety devices on the machine. Please take the necessary steps to train the machine operating personnel.

#### ***FOR SAFETY:***

**DO NOT OPERATE MACHINE:**

Unless Trained and Authorized.

Unless Operation Guide is Read and understood.

In Flammable or Explosive areas.

In areas with possible falling objects.

#### ***WHEN SERVICING MACHINE:***

**Avoid moving parts. Do not wear loose clothing; jackets, shirts, or sleeves when working on the machine. Use Windsor approved replacement parts.**

## GROUNDING INSTRUCTIONS

**THIS PRODUCT IS FOR COMMERCIAL USE ONLY.**

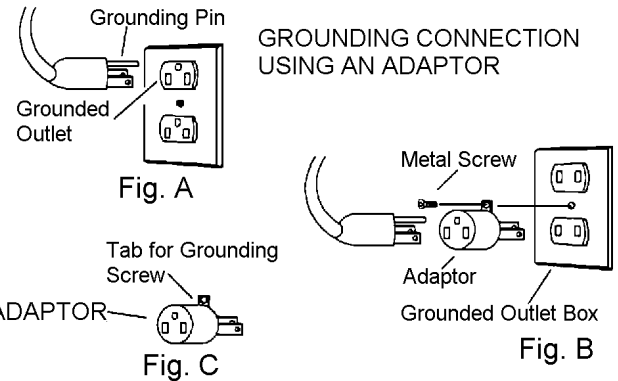
### ELECTRICAL:

In the USA this machine operates on a 15 amp nominal 120V, 60 hz, A.C. power circuit. The amp, hertz, and voltage are listed on the data label found on each machine. Using voltages above or below those indicated on the data label will cause serious damage to the motors.

### GROUNDING INSTRUCTIONS:

This appliance must be grounded. If it should malfunction or break down, grounding provides a path of least resistance for electric current to reduce the risk of electric shock. This appliance is equipped with a cord having an equipment-grounding conductor and grounding plug. The plug must be inserted into an appropriate outlet that is properly installed and grounded in accordance with all local codes and ordinances.

This appliance is for use on a nominal 120-volt circuit, and has a grounded plug that looks like the plug in "Fig. A". A temporary adaptor that looks like the adaptor in "Fig. C" may be used to connect this plug to a 2-pole receptacle as shown in "Fig. B", if a properly grounded outlet is not available. The temporary adaptor should be used only until a properly grounded outlet (Fig. A) can be installed by a qualified electrician. The green colored rigid ear, lug, or the like extending from the adaptor must be connected to a permanent ground such as a properly grounded outlet box cover. Whenever the adaptor is used, it must be held in place by a metal screw.



Note: Adaptors are not allowed in Canada.

### **WARNING**

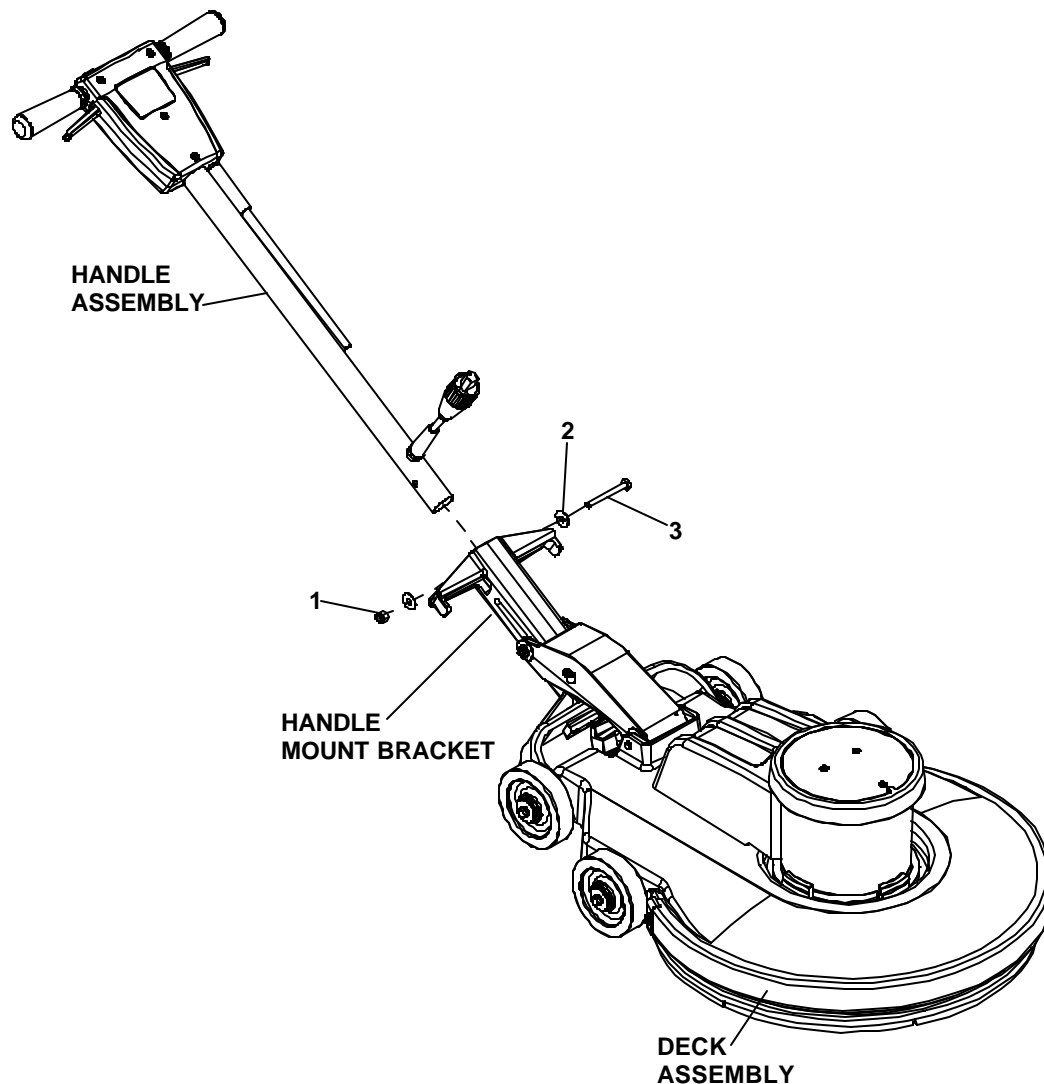
**Improper connection of the equipment-grounding conductor can result in a risk of electric shock. Check with a qualified electrician or service person if you are in doubt as to whether the outlet is properly grounded. Do not modify the plug provided with the appliance - if it will not fit the outlet, have a proper outlet installed by a qualified electrician.**

## TECHNICAL SPECIFICATIONS

| ITEM                   | DIMENSION/CAPACITY  |
|------------------------|---|
| Construction           | Heavy-duty die cast aluminum deck with heavy-duty rubber bumper, tubular steel self adjusting handle with die cast aluminum handle housing.           |
| Motor                  | 1.75 hp   |
| Transmission           | Direct drive from motor shaft.  |
| Pad speed              | 2000 r.p.m.   |
| Electrical system      | 115 volts, 60 Hz  |
| Cable                  | 75' [22,9 m], 14/3, built in cord wrap.   |
| Switches               | Dual levers with safety lock.   |
| Pad Holder             | Ø20" [50,8 cm] flexible disc  |
| Wheels                 | Four Ø5" [Ø12,7 cm], 1.25" [3,2 cm] wide, non-marking tread.  |
| Handle                 | Ø1.5" [Ø3,8 cm] tubular steel, self adjusting handle consistently maintains full contact with the floor, and easy to use thumb activated safety lock. |
| Dimensions (L x W x H) | 32" [81,3 cm] X 23.9" [60,2 cm] X 48.4" [122,9 cm]  |



## HANDLE INSTALLATION



The machine is shipped with handle unassembled.

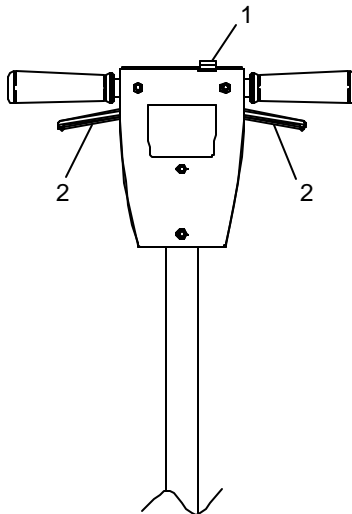
Follow these steps for installation:

1. Remove handle (38302) and deck assembly (29245) from carton.
2. Remove bolt (item 3), washers (item 2), and nut (item 1) from deck assembly (29245).
3. Install Handle Assembly as shown.
4. Slide Bolt (item 3) thru, washers (item 2), Handle Mount Brackets and Handle Assembly (38302) as shown. Tighten bolt (item 3) and nut (item 1) until the handle can not twist in the mount bracket (45-50 foot pounds).
5. Check handle for movement up and down.
6. Plug cord into handle cord receptacle.

## OPERATION

### CONTROLS

1. **Safety Lock** – Prevents unintended operation of the machine.
2. **Switch Levers** – Turns machine on/off.



### OPERATION

**! CAUTION** For indoor use only.

**! WARNING**

When using the pad, always keep the machine moving when in contact with the floor.

**! WARNING**

High starting torque. Hold machine firmly with both hands.

1. Ensure that the pad driver is in good shape. Install or change pad if necessary.
2. Plug the machine into a wall outlet as described in the grounding instructions.
3. Release latch, lower the handle and move into position.
4. Push the safety lock forward, unlocking the switch levers.
5. With the safety lock forward, squeeze one or both of the switch levers, turning the machine on. (These levers can be operated independently of each other). The safety lock will not re-engage until both levers are released.

6. To stop the machine, release the switch levers.
7. Do not let machine rest on pad. When finished with the machine, return handle to the storage position.

*NOTE: The machine is equipped with a circuit breaker to protect the motor in the event an overload condition occurs. The circuit breaker is located on the side of the motor. Push the reset button to restart the machine. If the breaker trips again, correct the cause of overloading before proceeding.*

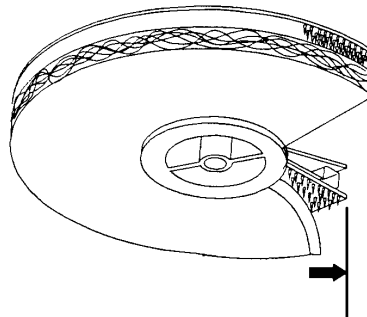
### DAILY MAINTENANCE

1. Inspect power cord for wear. To prevent electrical shock replace cords with frayed or cracked insulation immediately.
2. Place machine in the storage position.
3. Check pad condition. Change if soiled or torn.

### PAD INSTALLATION

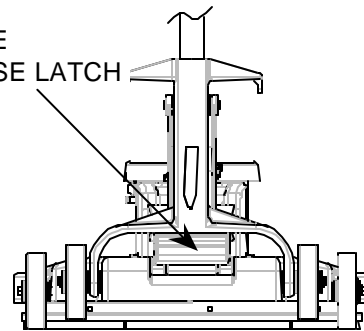
1. Lay machine back, exposing the under side.

Ensure pad is center on pad driver. Pull pad to edge of pad driver in several directions to check for proper engagement.



*NOTE: Use care when replacing center lock to prevent cross threading.*

HANDLE  
RELEASE LATCH

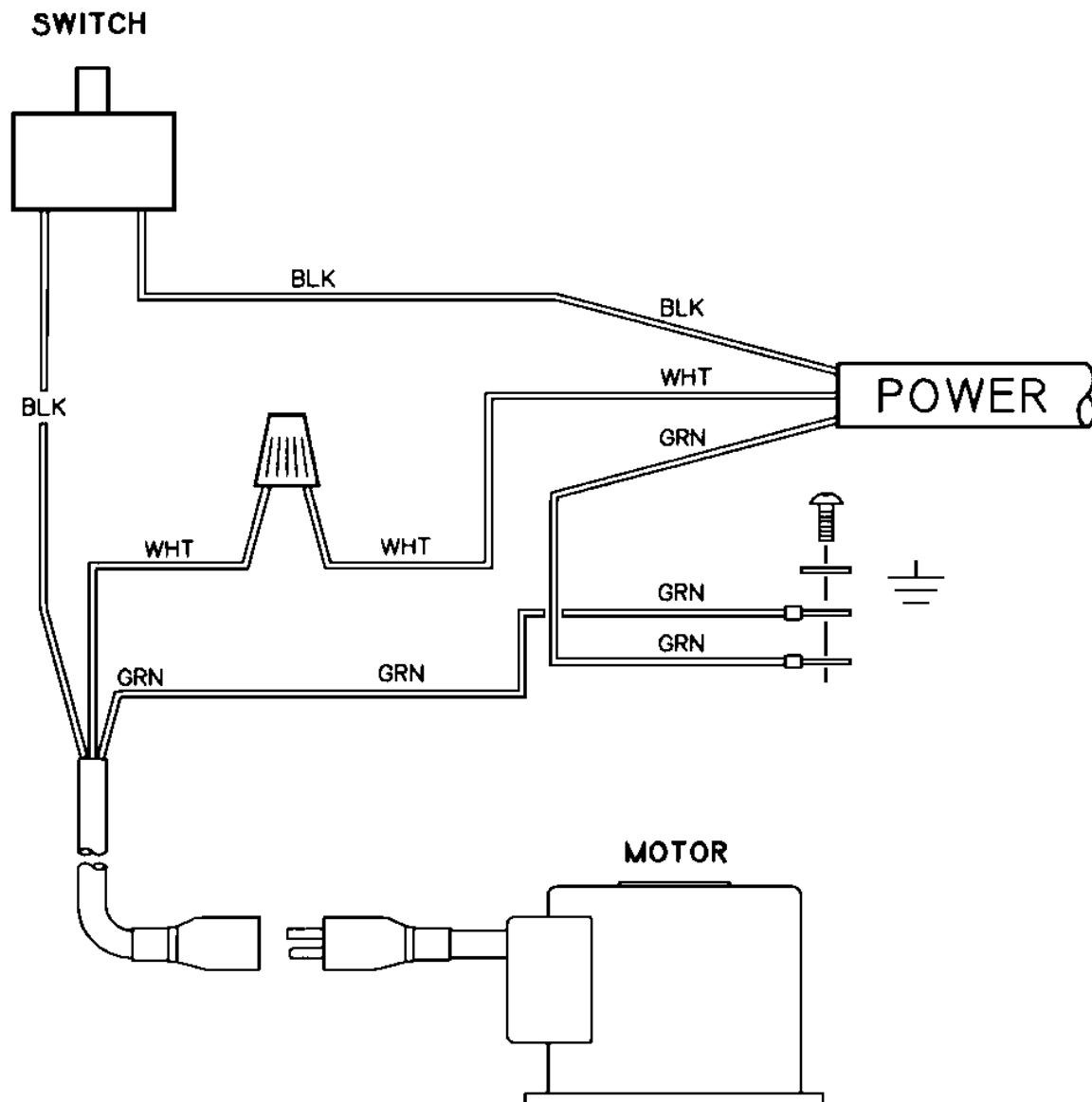


## MACHINE TROUBLESHOOTING

| PROBLEM                           | CAUSE                                | SOLUTION   |
|-----------------------------------|--------------------------------------|--|
| Machine will not run              | Circuit breaker tripped in building. | Check and reset  |
|                                   | Power switch failure                 | Test switch for continuity and replace if necessary.   |
|                                   | Tripped circuit breaker              | Reset  |
|                                   | Faulty power cord                    | Replace  |
|                                   | Fuse in motor is blown               | Replace<br>CAUTION: To reduce the risk of electrical shock, unplug the machine before opening fuse holder. Fuse will only open under extreme conditions. Investigate cause before replacing. |
| Electrical shock                  | Equipment not grounded               | Follow grounding instructions exactly.   |
|                                   | Receptacle not grounded              | Have an electrician inspect building's wiring.   |
|                                   | Internal wiring problem              | Ensure that the machine wiring matches the appropriate wiring diagram. Replace any wires or components which are short circuiting.   |
| Repeated circuit breaker tripping | Mechanical problem                   | Higher amp draws indicate a mechanical problem, find the problem before using the machine.   |
|                                   | Faulty circuit breaker               | Test circuit for continuity. Replace circuit breaker if necessary.   |
| Excessive vibration               | Pad not centered                     | Re-center pad.   |
|                                   | Damaged or unevenly worn pad.        | Replace pad. Do not rest machine on pad when not in use.   |
|                                   | Damaged pad driver.                  | Replace.   |

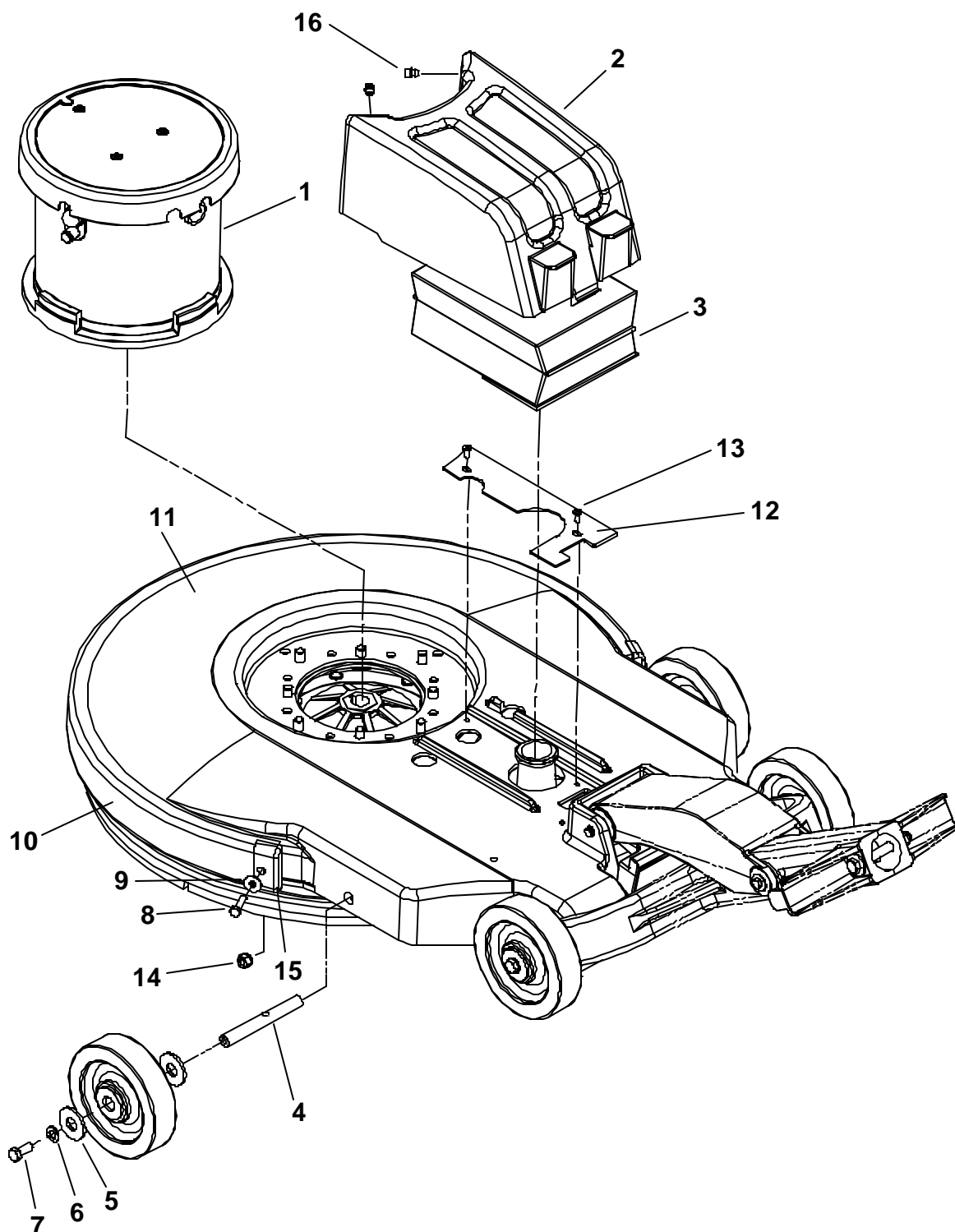
## WIRING DIAGRAM / NOTES

### 115V Diagram Single Speed



***THIS PAGE LEFT BLANK INTENTIONALLY***

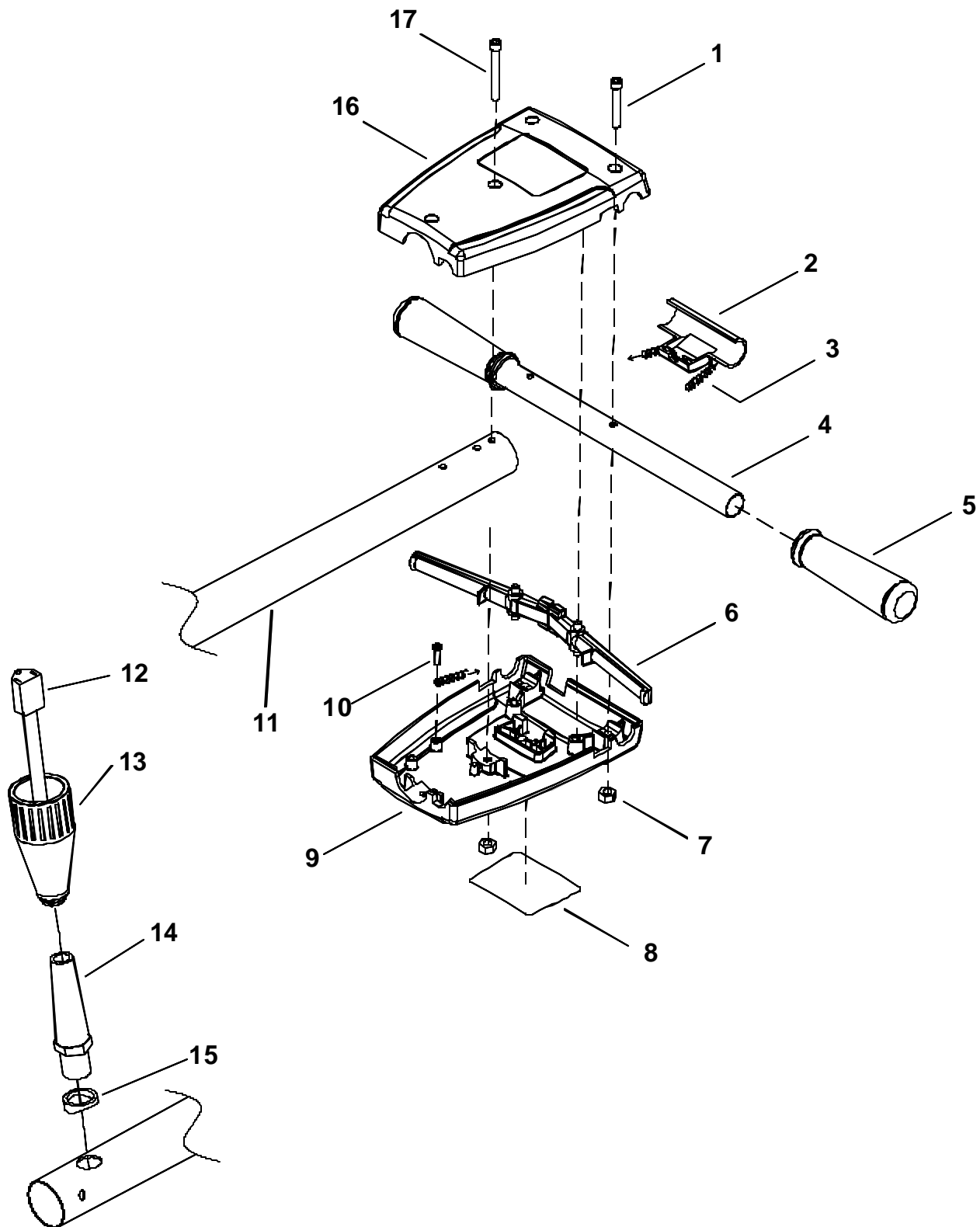
## DECK GROUP



## DECK GROUP

| REF | PART NO. | QTY | DESCRIPTION                      | SERIAL NO.<br>FROM | NOTES: |
|-----|----------|-----|----------------------------------|--------------------|--------|
| 1   | 53256    | 1   | MOTOR, 115 VOLT 1.5HP 2000RPM    |                    |        |
| 2   | 27918    | 1   | COVER, FILTER BAG                |                    |        |
| 3   | 140441   | 1   | BAG, DUST (PACKAGE OF 10 BAGS)   |                    |        |
| 4   | 05156    | 2   | AXLE, FRONT                      |                    |        |
| 5   | 87203    | 4   | WASHER, 14MM ID X 36 MM OD       |                    |        |
| 6   | 87054    | 2   | WASHER, M8 FLAT DIN125A PLT      |                    |        |
| 7   | 70262    | 2   | SCR, M8 X 20 HHMS PLTD           |                    |        |
| 8   | 70691    | 2   | SCR, M6 X 25 HHMS BLK            |                    |        |
| 9   | 87211    | 2   | WASHER, M6 FLAT BLK              |                    |        |
| 10  | 140423   | 1   | BUMPER, EXTRUSION                |                    |        |
| 11  | 29244BLU | 1   | DECK, 20 IN BURNISHER, BLUE      |                    |        |
| 12  | 70738    | 2   | SCR, M5 X .8MM X 10 MM PPHMS BLK |                    |        |
| 13  | 67463    | 1   | RETAINER, CORD                   |                    |        |
| 14  | 57220    | 2   | NUT, M6 X 1 HEX NYLOCK PLTD      |                    |        |
| 15  | 27871    | 2   | CAP EXTRUSION                    |                    |        |
| 16  | 140449   | 4   | BUMPER, RUBBER                   |                    |        |

## ***HANDLE GROUP***

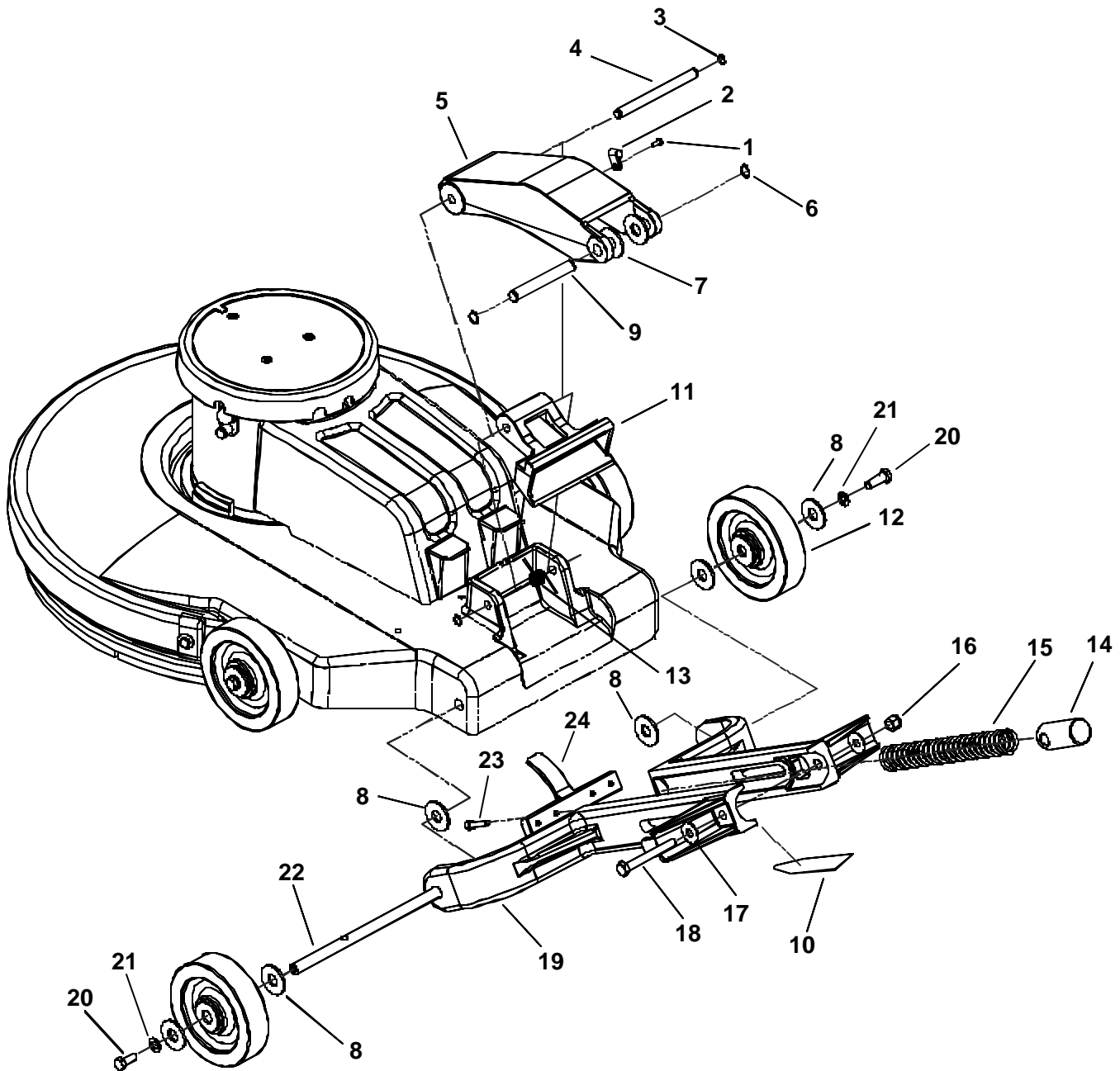




## **HANDLE GROUP**

| REF | PART NO. | QTY | DESCRIPTION                     | SERIAL NO.<br>FROM | NOTES: |
|-----|----------|-----|---------------------------------|--------------------|--------|
| 1   | 70686    | 2   | SCR, M6 X 45 SHCS BLK           |                    |        |
| 2   | 51326    | 1   | LOCK, SAFETY HANDLE             |                    |        |
| 3   | 73990    | 2   | SPRING, EXT. .50D X 3.5L        |                    |        |
| 4   | 140428   | 1   | BAR, HANDLE                     |                    |        |
| 5   | 36196    | 2   | GRIP, POLISHER HANDLE           |                    |        |
| 6   | 51327    | 2   | LEVER, SWITCH                   |                    |        |
| 7   | 57274    | 4   | NUT, M6 X 1                     |                    |        |
| 8   | 500194   | 1   | LABEL, WARNING                  |                    |        |
| 9   | 41363    | 1   | HOUSING, POLISHER HANDLE FRONT  |                    |        |
| 10  | 70689    | 2   | SCR, M4.8 X 10 HHTF TYPE B      |                    |        |
| 11  | 78473    | 1   | TUBE HANDLE                     |                    |        |
| 12  | 23209    | 1   | CORDSET, 14/3 X 38 IN, SJT, BLK |                    |        |
| 13  | 14407    | 1   | BOOT, TWIST LOCK                |                    |        |
| 14  | 730012   | 1   | STRAIN RELIEF, 14/3 STRAIGHT    |                    |        |
| 15  | 730021   | 1   | SPACER, POLISHER HANDLE         |                    |        |
| 16  | 41366    | 1   | HOUSING, POLISHER HANDLE FRONT  |                    |        |
| 17  | 70687    | 2   | SCR, M6 X 50 SHCS BLK           |                    |        |

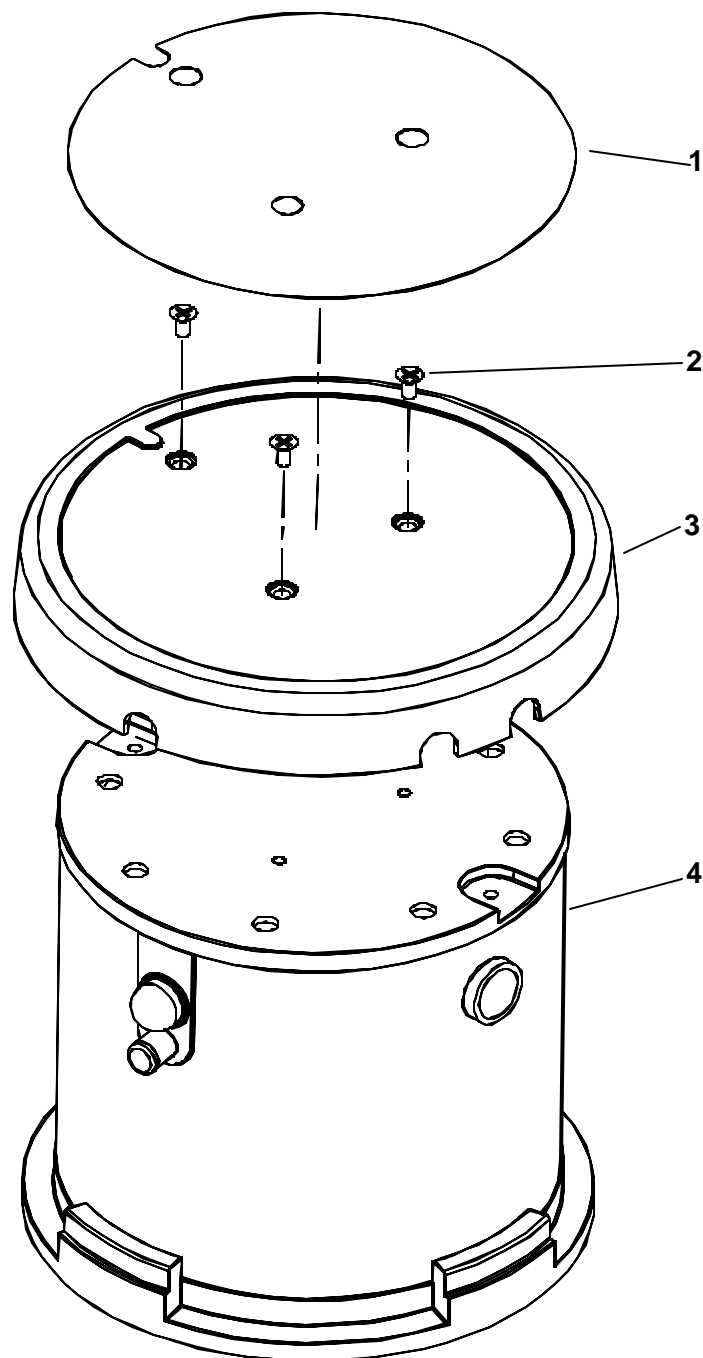
## LOWER HANDLE GROUP



## LOWER HANDLE GROUP

| REF | PART NO. | QTY | DESCRIPTION                             | SERIAL NO. | NOTES: |
|-----|----------|-----|---|------------|--------|
| 1   | 70738    | 1   | SCR, M5 X .8MM X 10 MM PPHMS BLK        |            |        |
| 2   | 20005    | 1   | CLAMP, 5/16 NYLON                       |            |        |
| 3   | 67468    | 2   | RING, 10MM EXTERNAL SNAP                |            |        |
| 4   | 66340    | 1   | PIN, DOWEL 10MM DIA X 124 MM LG         |            |        |
| 5   | 140421   | 1   | BRACKET, HANDLE LINK                    |            |        |
| 6   | 67469    | 2   | RING, 13MM EXTERNAL SNAP                |            |        |
| 7   | 87234    | 2   | WASHER, 14MM ID X 36MM OD X 2MM         |            |        |
| 8   | 87203    | 8   | WASHER, 14MM ID X 35 MM OD              |            |        |
| 9   | 730052   | 1   | SPACER, LINKAGE                         |            |        |
| 10  | 500542   | 1   | LABEL, HANDLE RELEASE                   |            |        |
| 11  | 51358    | 1   | LATCH, HANDLE                           |            |        |
| 12  | 89206    | 2   | WHEEL. 5D X 1.25 X 13MM ID GRY          |            |        |
| 13  | 730055   | 1   | SPRING, 180 DEGREE TORSION              |            |        |
| 14  | 140420   | 1   | BLOCK, SPRING COMPRESSION               |            |        |
| 15  | 730054   | 1   | SPRING, COMP 1.140 OD X 8.40 L X .150 W |            |        |
| 16  | 57119    | 1   | NUT, 3/8-16 HEX NYLOCK                  |            |        |
| 17  | 87171    | 2   | WASHER, 3/8 FLAT                        |            |        |
| 18  | 70069    | 1   | SCR, 3/8-16 X 3 HHCS GR5                |            |        |
| 19  | 140419   | 2   | BRACKET, HANDLE MOUNT                   |            |        |
| 20  | 70262    | 1   | SCR, M8 X 20 HHMS PLTD                  |            |        |
| 21  | 87054    | 2   | WASHER, M8 FLAT DIN125A PLT             |            |        |
| 22  | 05157    | 1   | AXLE, REAR                              |            |        |
| 23  | 70733    | 4   | SCR, M6 X 30 SHCS PLTD                  |            |        |
| 24  | 730053   | 1   | STRIKER, LATCH                          |            |        |

## MOTOR GROUP



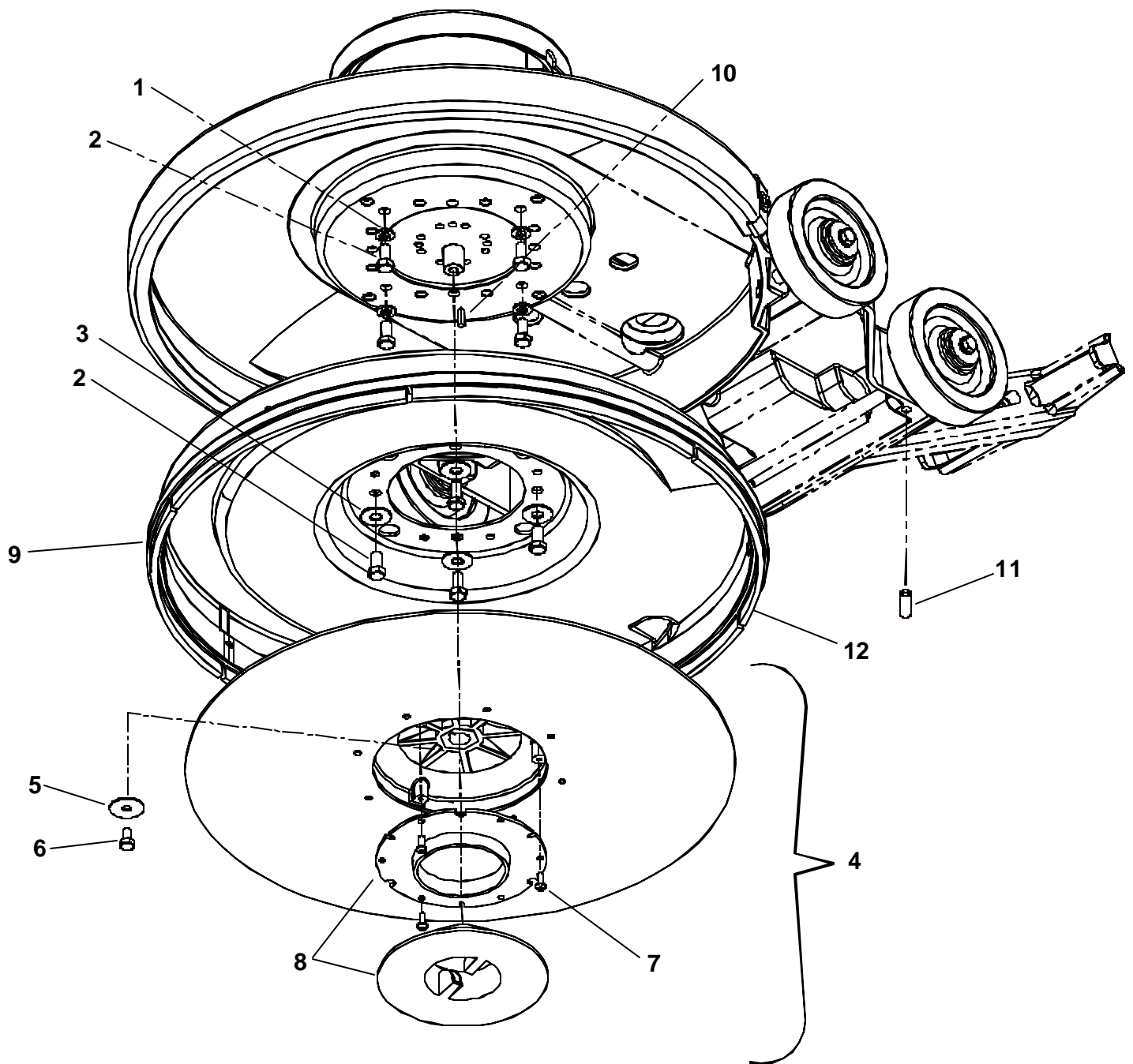
## **MOTOR GROUP**

| REF | PART NO. | QTY | DESCRIPTION                   | SERIAL NO.<br>FROM | NOTES: |
|-----|----------|-----|-------------------------------|--------------------|--------|
| 1   | 500421   | 1   | LABEL, MB2000 MAIN            |                    |        |
| 2   | 70702    | 3   | SCR, M5 X .8 X15MM BLK        |                    |        |
| 3   | 27884    | 1   | COVER, MOTOR 1.25HP           |                    |        |
| 4   | 53256    | 1   | MOTOR, 115VOLT 1.75HP 2000RPM |                    |        |

### MOTOR COMPONENTS (NOT SHOWN)

| REF | PART NO. | QTY | DESCRIPTION                   | SERIAL NO.<br>FROM | NOTES: |
|-----|----------|-----|-------------------------------|--------------------|--------|
|     | 140411   | 1   | CIRCUIT BREAKER, 20 AMP       |                    |        |
|     | 67029    | 1   | RECTIFIER                     |                    |        |
|     | 14404    | 1   | BRUSH SET MP MOTOR (PKG OF 4) |                    |        |
|     | 34378    | 1   | FUSE                          |                    |        |
|     | 34379    | 1   | FUSE HOLDER                   |                    |        |
|     | 09134    | 2   | BEARING, MOTOR                |                    |        |

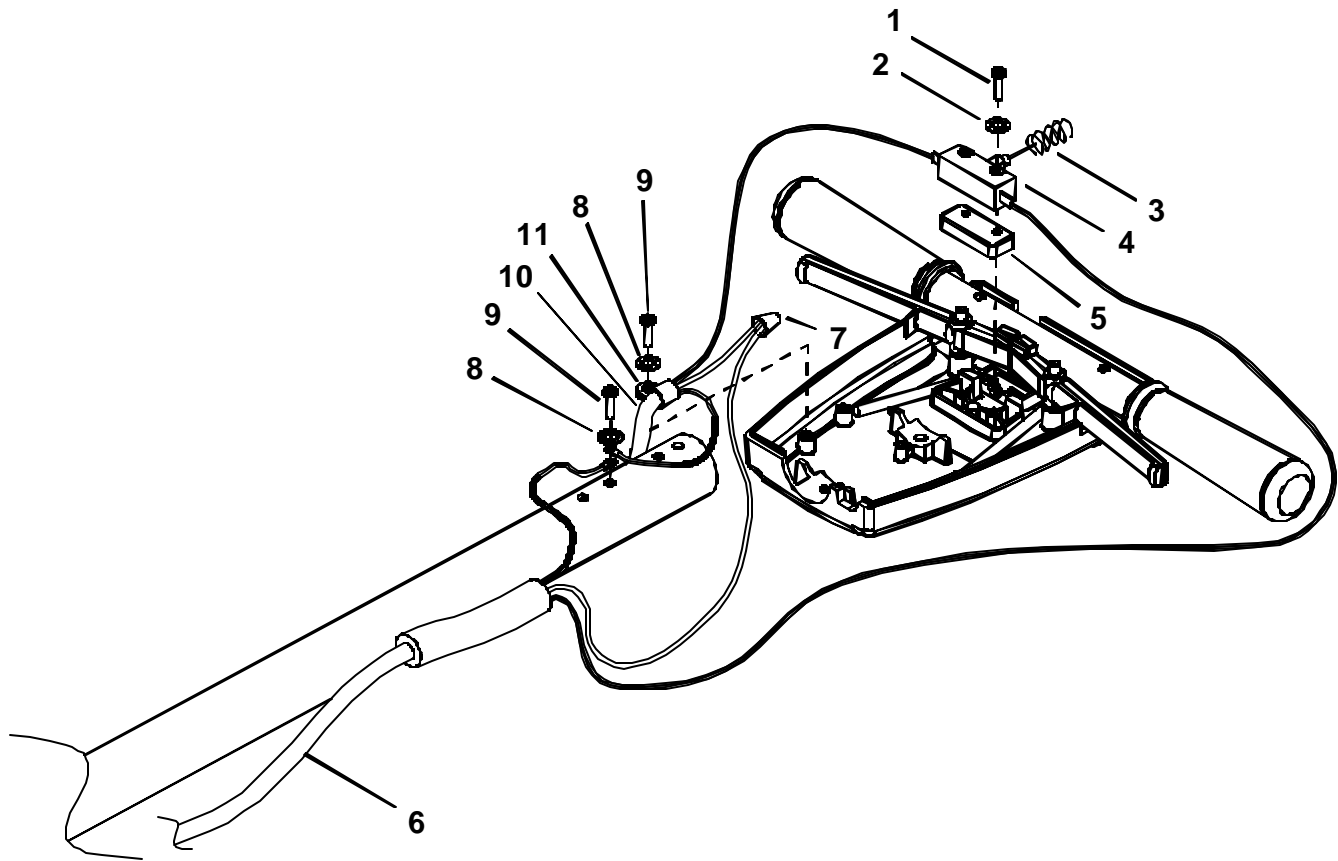
## PAD/DRIVER GROUP



## ***PAD/DRIVER GROUP***

| REF | PART NO. | QTY | DESCRIPTION                   | SERIAL NO. | NOTES:               |
|-----|----------|-----|-------------------------------|------------|----------------------|
| 1   | 87163    | 4   | WASHER, 3/8 SPLIT LOCK PLTD   |            |                      |
| 2   | 70507    | 8   | SCR, 3/8-16 X 3/4 HHCS PLT    |            |                      |
| 3   | 87086    | 4   | WASHER, M10 X 30 PLTD         |            |                      |
| 4   | 64108    | 1   | PAD DRIVER, 20 INCH BURNISHER |            | INCLUDES ITEMS 7 & 8 |
| 5   | 87102    | 1   | WASHER, 5/46 ID X 1 1/4 OD    |            |                      |
| 6   | 70244    | 1   | SCR, 5/16-24 X 1/2 HHMS SS    |            |                      |
| 7   | 70720    | 3   | SCR, #10 X 3/8 PPHST TYPE B   |            |                      |
| 8   | 51353    | 1   | LOCK, PAD DRIVER BLUE         |            |                      |
| 9   | 730065   | 1   | SHROUD, ASM. 20 IN BURNISHER  |            | INCLUDES ITEM 12     |
| 10  | 48082    | 1   | KEY, 3/16 SQ X 11/16 LG CRS   |            |                      |
| 11  | 70736    | 3   | SET SCR, M8 X 20MM CUP PT     |            |                      |
| 12  | 730074   | 1   | BRUSH, STRIP (PACKAGE OF 6)   |            |                      |

## WIRING GROUP





## **WIRING GROUP**

| REF | PART NO. | QTY | DESCRIPTION                    | SERIAL NO.<br>FROM | NOTES: |
|-----|----------|-----|--------------------------------|--------------------|--------|
| 1   | 70688    | 2   | SCR, M3.5 X 30 HHTF TYPE B     |                    |        |
| 2   | 87057    | 2   | WASHER, M4 SHAKEPROOF          |                    |        |
| 3   | 73993    | 1   | SPRING, COMP, .48OD X .875L    |                    |        |
| 4   | 72123    | 1   | SWITCH, 25A SPST 125-250V SNAP |                    |        |
| 5   | 73989    | 1   | SPACER, SWITCH POLISHER        |                    |        |
| 6   | 23154    | 1   | CORD SET, 14/3 STO X 75' YLW   |                    |        |
| 7   | 57069    | 1   | NUT, ORG WIRE (2-5 18G/2-14G)  |                    |        |
| 8   | 87208    | 2   | WASHER, M5 SHAKEPROOF PLTD     |                    |        |
| 9   | 70689    | 2   | SCR, M4.8 X 10 HHTF TYPE B     |                    |        |
| 10  | 23207    | 1   | CORDSET, 14/3 X 48", SJT, BLK  |                    |        |
| 11  | 20005    | 1   | CLAMP, 5/16 NYLON              |                    |        |

## ***SUGGESTED SPARE PARTS***

| PART NO. |        | DESCRIPTION                    | SERIAL NO.<br>FROM | NOTES: |
|----------|--------|--------------------------------|--------------------|--------|
|          | 73990  | SPRING                         |                    |        |
|          | 73993  | SPRING                         |                    |        |
|          | 72123  | SWITCH                         |                    |        |
|          | 140411 | CIRCUIT BREAKER, 20 AMP        |                    |        |
|          | 67488  | RECTIFIER                      |                    |        |
|          | 14404  | BRUSH SET MP MOTOR (PKG OF 4)  |                    |        |
|          | 34378  | FUSE                           |                    |        |
|          | 34379  | FUSE HOLDER                    |                    |        |
|          | 09135  | BEARING, MOTOR                 |                    |        |
|          | 51353  | LOCK, PAD DRIVER BLUE          |                    |        |
|          | 140441 | BAG, DUST (PACKAGE OF 10 BAGS) |                    |        |
|          | 140420 | BLOCK, SPRING COMPRESSION      |                    |        |
|          | 730074 | BRUSH, STRIP (PACKAGE OF 6)    |                    |        |



## WINDSOR INDUSTRIES New Machine Warranty

### Limited Warranty

Windsor Industries, Inc. warrants new machines against defects in material and workmanship under normal use and service to the original purchaser. Any statutory implied warranties, including any warranty of merchantability or fitness for a particular purpose, are expressly limited to the duration of this written warranty. Windsor will not be liable for any other damages, including but not limited to indirect or special consequential damages arising out of or in connection with the furnishing, performance, use or inability to use the machine. This remedy shall be the exclusive remedy of the buyer. The warranty period is subject to the conditions stated below.

### 6 / 3 / 1 Warranty: 6 Years Polyethylene (PE) Housings, 3 Years Parts, and 1 Year Service Labor

Subject to conditions outlined below, Windsor Industries warrants rotationally molded PE housings and parts on all of its machines to be free from defects in material and workmanship, under normal use and service for six (6) years to the original owner.

Under this warranty we guarantee the performance of non-polyethylene parts and components to be free from defects and for up to three (3) years to the original end user. Parts replaced or repaired under this warranty are guaranteed for the remainder of the original warranty period. (See table below)

Service labor charges are covered for up to one (1) year from the date of purchase through authorized Windsor service provider. No travel coverage is extended for cord-electric models. See table below for each general product model warranty coverage.

| Product                           | PE Housing & Parts | Non- PE Parts | Service Labor | Travel   |
|-----------------------------------|--------------------|---------------|---------------|----------|
| Rider Scrubbers                   | 6 years            | 3 years       | 1 years       | 6 Months |
| Rider Sweepers                    | 6 years            | 1 year        | 1 years       | 6 Months |
| Walk Behind Scrubbers             | 6 years            | 3 years       | 1 years       | 6 Months |
| Walk Behind Sweepers              | 6 years            | 1 year        | 1 years       | 6 Months |
| Extractors                        | 6 years            | 3 years       | 1 years       | -        |
| Polishers / Elec. Burnishers / GH | 6 years            | 3 years       | 1 years       | -        |
| Wide Areas Vacuums                | 6 years            | 3 years       | 1 years       | -        |
| VacPak Vacuums                    | 6 years            | 1 year        | 1 year        | -        |
| Air Movers / Dri-matic / TITAN™   | 1 year             | 1 year        | 1 year        | -        |
| Propane Burnishers / Strippers    | -                  | 2 year        | 1 year        | -        |
| Tracer/Flex Sweepers/Scrubbers    | 6 years            | 2 year        | 6 months      | 90 days  |

|             |  |                          |
|-------------|--|--------------------------|
| VERSAMATIC® | Brush motor, Vacuum motor, Belts – 3 years | All other parts – 1 year |
| SENSOR®     | Vacuum motor, Belts – 2 years              | All other parts – 1 year |

### Product exceptions and Exclusions:

- Extractor brush motors, pump motors, **ALL** PC boards and electronics, **ALL** Vacuum motors (other than VERSAMATIC® and SENSOR®), **ALL** pumps, and FLEXSOL™ diaphragms carry a one (1) year parts and service labor warranty.
- The Onan® engines have three (3) year manufacturer's warranty. The Honda® and Kawasaki® engines have two (2) year manufacturer's warranty. **NOTE:** The engine warranty is administered through the engine manufacturer and must be repaired at an authorized service center.

Normal wear items and accessories including, but not limited to, belts, brushes, capacitors, carbon brushes, casters, clutches, cords, filters, finishes, gaskets, hoses, light bulbs, rectifiers, switches, squeegees, bearings, pulleys, relays, actuating cables, wheels, tires, propane tanks, and batteries will be warranted for manufacturing defects for 90-days from the purchase date.

The warranty commences on the purchase date by the original end user from an authorized Windsor agent, subject to proof of purchase. The Machine Registration Card must be completed and returned immediately at the time of purchase. If proof of purchase cannot be identified, the warranty start date is 90 days after the date of sale to an authorized Windsor distributor. Parts replaced or repaired under warranty are guaranteed for the remainder of the original warranty period.



## **WINDSOR INDUSTRIES New Machine Warranty**

---

### **90 Day Warranty Extension Available**

Upon receipt of the Machine Registration Card, Windsor will extend by 90 days, from the date of purchase, all items included under the one-year provision. This applies only to one-year items and does not include 90-day wear items.

### **This Warranty Shall Not Apply To:**

1. Any product that has been subject to abuse, misuse, neglect or unauthorized alteration (including the use of incompatible or corrosive chemicals or overloading of capacity).
2. Products that have experienced shipping or freight damage.
3. Repairs necessary to correct any failure due to improper pre-delivery service and inspection by the selling dealer.
4. Excessive time for cleaning units in preparation for repair.
5. Any repairs resulting from poor initial service work or improper diagnosis.
6. Tune-up parts such as plugs, plug wires and condensers.
7. Any design alterations performed by an organization not authorized or specified by Windsor.
8. Battery and charger warranties are handled directly with the manufacturer (Trojan® batteries and Lester® chargers).
9. High-pressure washing.
10. Electrical components exposed to moisture.

If difficulty develops during the warranty period, contact the authorized Windsor agent from whom the product was purchased. Windsor Industries, Inc. may elect to require the return of components to validate a claim. Any defective part to be returned must be shipped freight prepaid to an authorized Windsor Distributor/Service Center or to the Windsor factory.

### **Use Of Parts Not Approved By Windsor Industries, Inc. Will Void All Warranties**

This warranty is valid only for all products sold after July 1, 1995. A product sold before that date shall be covered by the limited warranty in effect at the date of sale to the original purchaser.