



**Large Rider Durability**  
**Micro Rider Platform**  
**Simple to Operate**  
**Easy to Maintain**  
**Productivity Maximized**

## WHY STAND WHEN YOU CAN SIT

The MAX Ride 20 is the first compact micro rider scrubber engineered with large rider durability in mind. Built on an extremely durable e-coated steel frame with large integrated solution and recovery tank capacities, the MAX Ride maximizes productivity at an exceptional value.

This innovative Micro rider with its unique squeegee assembly to brush proximity offers best in class water pick up.

Enhance the Max Ride 20 with the integration of Minuteman's SPORT technology (OPTIONAL).



# MAX Ride 20

Rider Floor Scrubber

# MAX Ride 20 Features & Specifications

## Key Features:

- Auto Load and Unload of brush or pad driver
- On-board Charger
- Capable of turning 360 degrees on its own axis providing exceptional maneuverability
- 18 gallon solution and recovery tanks
- Squeegee is contained under the unit and follows the brush/pad driver for complete water pickup
- SPORT Technology (Optional)

Battery Indicator

Vacuum & Squeegee Assembly Control

Brush Load & Activation Control

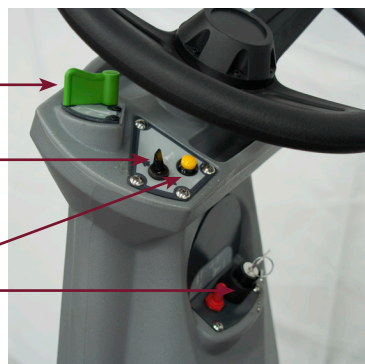


Water Valve

Forward & Reverse Control

Safety Horn

Key Switch & Unload Control



Wide 20" Auto load & Unload pad driver or brush

Tool Free Squeegee Removal

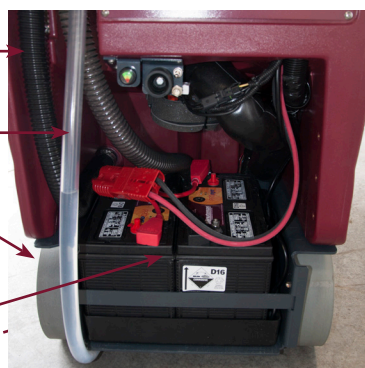


Flexible Drain Hose

Water Level Indication

Non-Marking Wheels

Easy Access to Batteries



Model	MAX Ride 20
Scrub Head Type	Disc
Scrub Path	20 in (53 cm)
Solution Capacity	18 gal (68L)
Recovery Capacity	18 gal (68L)
Max Speed	3.1 mph (5 kh)
Max Productivity	27,200 sq. ft./hr (2527 sq m / hr)
Actual Productivity	22,015 sq. ft./ hr (2045 sq m / hr)
Brush Pressure	Floating- Locked-
Brush Speed	200-350-450 RPM
Brush Motor	600 watt
Vacuum Motor	550 watts
Vacuum Airflow	69 cfm (32.4L /sec)
Vacuum Waterlift	68" H2O (1717 mm H2O)
Sound Pressure	68 dba
Water Flow	.45 gpm (1.7 L / min)
Min. Turn-Around Aisle Width	50.5" (1283 mm)
Maximum Ramp Climbing	6%
Squeegee Width	25" (635mm)
Machine Voltage	24 VDC
Power Source	Battery (2) 12V 140 Ah
Battery Charger	On Board
Maximum Run Time	3-3.5 hrs.
Dimensions W/ Squeegee	47.5"L X 25.5"W X 45" H (1206mm X 648mm X 1143mm)
Weight Without Batteries	342 lbs (155 kg) No Solution
Weight With Batteries	691 lbs (313 kg) Full Solution and 140 AH battery pack
Approvals	None
IP Protection Class	IPX4

Minuteman International Inc  
14N845 U.S. Route 20  
Pingree Grove, IL 60140  
Phone: (847) 264-5400  
Fax: (847) 683-5207

A Member of the Hako Group

Minuteman is a full line manufacturer of sweepers and scrubbers; as well as critical filter vacuums, industrial and commercial vacuums, floor and carpet machines designed for commercial and institutional facilities.

Come Visit our Website at

[www.minutemanintl.com](http://www.minutemanintl.com)

For cleaning machines, parts & supplies click/visit [www.southeasternequipment.net](http://www.southeasternequipment.net)