



## RA40™ Micro Rider Scrubber

- **SmartFlow™** solution control system
- **Excellent Maneuverability**
- **Flexible Cleaning** to address varying soil levels
- **Designed to Provide** maximum clean and safety



Trusted. Reliable. Efficient.

**Clarke®**

# The most productive 20 inch scrubber



## Meet the RA40™: the most innovative Clarke scrubber ever.

This compact, highly maneuverable 20 inch autoscrubber is designed to elevate the cleanliness, health and safety of your facility to the next level. Every cutting-edge feature—from the ultra-sharp turning radius to the onboard chemical mixing system—has been engineered to the high performance and reliability standards you have come to expect from Clarke over the past 100 years!

## SmartFlow™ technology increases productivity.

SmartFlow technology automatically reduces the solution flow rate when the operator slows down. Automatically reducing the flow rate on turns, edge cleaning or maneuvering around obstacles helps to avoid water left behind and increases the productivity by up to 50% per tank. This means greatly reduced slip and fall risk and cost to clean. Reducing the amount of cleaning solution used also prevents wasting water and chemical, increasing sustainability.

## Extreme maneuverability and safer control.

The small profile design of the RA40 provides full sightline visibility, a short turning radius and the ability to clean in tight spaces. It also contributes to a low center of gravity that, when combined with Safe-T-Steering, prevents tipping incidents. All these features contribute to safer operation for both operators and other building occupants.



### Steering Wheel Control Panel

Extremely user friendly and easy to learn dashboard with One-Touch button and intuitive display integrated into the steering wheel. Exclusive multifunction digital display allows for maximum customization of machine settings.



### CMS Control Button

Clarke's exclusive Chemical Mixing System automatically mixes adjustable levels of concentrated chemicals stored in an onboard reservoir with clean water stored in the solution tank. That means you can stop wasting unused chemical, get more consistently clean floors and give the RA40 an extra boost of cleaning power for heavily soiled areas.



### Onboard Squeegee Storage

Built-in squeegee hanging system on tank allows for safe transportation through doorways and tight areas, while permitting tank drying.

# RA40™



- 1** Large, 18.5 gallon tank for high cleaning productivity
- 2** Two levels of scrub pressure for added cleaning power in heavily soiled areas
- 3** Water-level indicator easily viewable from the operator's seat
- 4** Low step-on design makes for easy onboarding and offboarding
- 5** Wide, ergonomic operator seat and steering wheel provide a more comfortable driving experience
- 6** Easy-removal squeegee with built in squeegee hanger stores easily on the backside when not in use
- 7** Scrub deck and squeegee raise and lower quickly and easily
- 8** Lid lifts off easily, providing access to clean tank and debris catcher



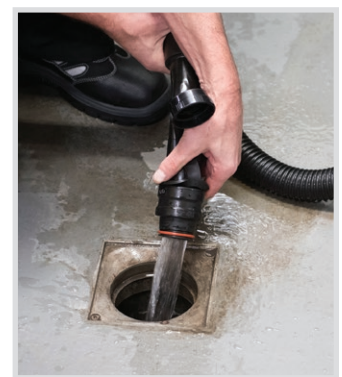
**Brush Assembly**  
Tools-free removable brushes or pads.



**Recovery Tank Access**  
Recovery tank fully tiltable gives easy access to battery compartment and the detergent container.



**Battery Compartment**  
The RA40™ is available with wet or AGM maintenance-free batteries.



**Drain Hose**  
No-nonsense, easyflow hose makes draining the tank simple.

Specifications	RA40™
Model Numbers	56384073 – with (2) 130 Ah wet batteries 56384074 – with (2) 140 Ah maint-free AGM batteries
Path Width	20 in (51 cm) disc
Tank Capacities	18.5 gal (70 L)
Voltage	24 V
Brush Motor Speed	155 RPMs
Brush Motor	0.6 hp (450 W)
Brush Pressure	33/66 lb (15/30 kg)
Drive Motor	0.6 hp (400 W)
Working Speed	3.7 mph (6 kph)
Max Climbing Rate	2%
Productivity at 3.7 mph	32,560 ft <sup>2</sup> /hr (3,025 k <sup>2</sup> /hr)
Productivity at 2.5 mph	22,000 ft <sup>2</sup> /hr (2,044 k <sup>2</sup> /hr)
Vacuum Motor	0.42 hp (310 W)
Vacuum Waterlift	39 in (9.8 KPA)
IP Protection Class	X4
Length x Width w/o Squeegee x Height	50 x 22 x 40 in (127 x 55 x 102 cm)
Max Transportation Speed	3.7 mph (6 kph)
Max Running Time	2.5 hours
Minimum Turnaround Aisle Width	70.9 in (180 cm)
Sound Pressure Level	68 dB A ±3
Squeegee Width	28.3 in (72 cm)
Water Flow (CL/M)	0,75 / 1,5 / 3,0
Gross Weight	754 lb (342 kg)



### Accessories and Replacement Parts

- Genuine LINATEX® squeegee blade kit (pn 56384681)
- Polyurethane squeegee blade kit (pn 910000490)
- Gum rubber squeegee blade kit (pn 910000060)
- Short trim pad holder (pn L08837018)
- Red pads, case of 5 ea (pn 976068)
- Prolene brush (pn L08837025)
- USB charging kit (pn 9100000784)
- Chemical mixing kit (pn 9100000953)
- Flashing safety beacon kit (pn 9100000663)



Specifications are subject to change without notice.



### Ease of Use

- Intuitive design for minimal training
- Dashboard with digital display placed in the steering wheel
- Large operator seat and wide space for legs for all different users
- Intuitive icon buttons for vacuum, brush rotation and water/detergent flow
- Wide range of accessories to make the cleaning job as faster and comfortable as possible

### Productivity

- SmartFlow Technology
- 20 inch scrubbing width, 18.5 gallon water tanks and 3.7 mph working speed
- Chemical mixing system gives full control over detergent use making possible to use chemicals only when really needed
- Water and chemical flow can be changed while working according to floor conditions

### Reliable

- Thoroughly tested high-quality components
- Simple to clean and maintain due to its surface finishing
- Fast installation and removal of squeegee blades



9435 Winnetka Avenue North  
Brooklyn Park, MN 55445  
Phone: 800.253.0367  
Fax: 800.825.2753  
[www.clarkeus.com](http://www.clarkeus.com)

240 Superior Boulevard  
Mississauga, Ontario, Canada L5T 2L2  
Phone: 800.668.8400  
Fax: 800.263.5111  
[www.nilfisk-advance.ca](http://www.nilfisk-advance.ca)