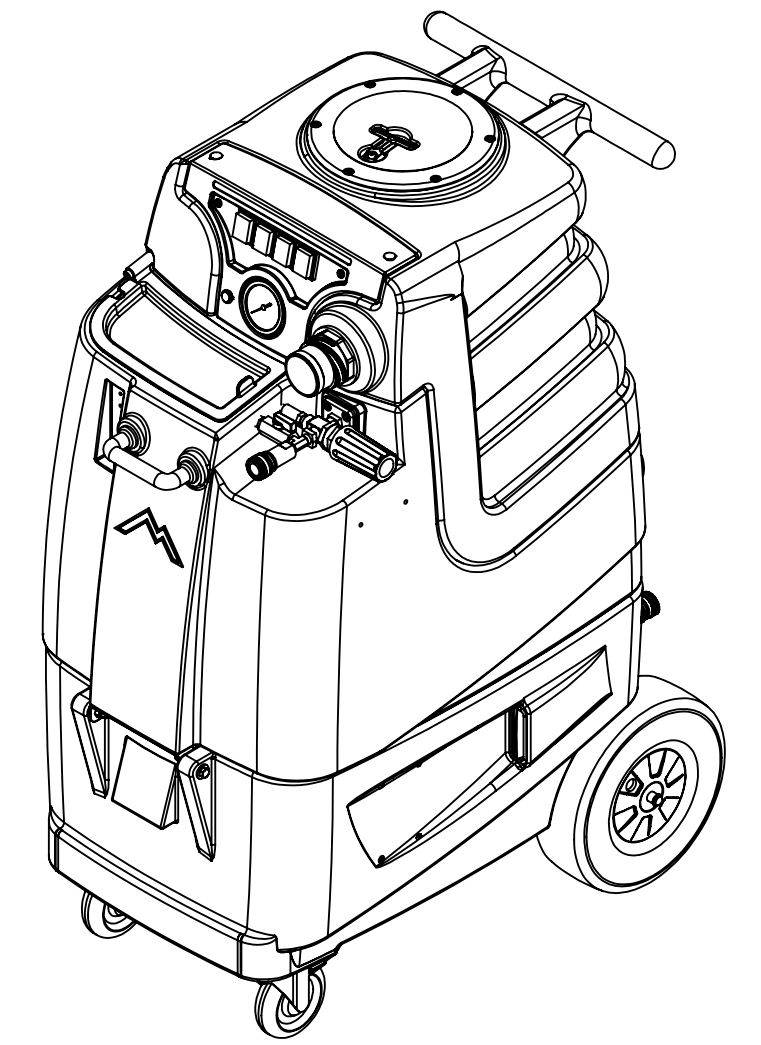


ITEM NO.	PART NO.	DESCRIPTION	QTY.	MSRP
1	H212	flat washer, 9/16"ID x 1 1/16"OD, AN960-C916	2	\$0.99 ea
2	B199	coupler, 1/2" fpt x 1/4" fpt	3	\$8.99 ea
3	B644	adapter, brass, 1/2" barb x 1/4" mpt	1	\$2.49 ea
4	B173	ferrule, 1/2", brass	10	\$0.99 ea
5	PH615-30	sol hose, 1/2", 3045psi, black	1	\$8.99 ft
6	H273	nut, kep, #10-32 zinc	14	\$0.99 ea
7	H210	washer, 1/4" flat, s/s	30	\$0.99 ea
8	H186	screw, 10-32 x 3/4, phil flat full thread	6	\$0.99 ea
9	C381	pump out, 115v	1	\$187.49 ea
10	PH615-37	sol hose, 1/2", 3045psi, black	1	\$8.99 ft
11	B160	adapter, brass, 1/2" barb x 3/8" fsw, ball end	4	\$3.49 ea
12	H042	c-clip, 12mm, external	2	\$0.99 ea
13	H109	wheel, 10", foam filled	2	\$79.99 ea
14	H232	axle, 19.60" x .50"	1	\$9.99 ea
15	H254	washer, axle, cut 1/2" id	4	\$0.99 ea
16	P514	vent, side, LTD	2	\$5.00 ea
17	H668	caster, 4", black hub & gray tread	2	\$19.49 ea
18	H342	bolt, 1/4-20 x 1" hex head, s/s	8	\$0.99 ea
19	H216	nut, lock, 1/4-20, nylon insert, s/s	14	\$0.99 ea
20	B105	bushing, brass, 3/8"mpt x 1/4"	5	\$3.19 ea
21	B107	nipple, brass, 1/4"m, hex	4	\$3.19 ea
22	B103	elbow, brass, 90 deg, 1/4"mpt x 1/4" fpt	4	\$4.49 ea
23	B652	elbow, brass, 90 deg, 3/8"mpt x 1/4"mpt	3	\$8.49 ea
24	H202	bolt, 1/4x20x3/4" hex head	4	\$0.99 ea
25	B169	tee, 3/8" Street Tee, MPTxFPTxFPT	1	\$23.99 ea
26	PH615-7	sol hose, 1/2", 3045psi	1	\$8.99 ft
27	PH615-19	sol hose, 1/2", 3045psi, black	1	\$8.99 ft
28	B142A	coupling, brass, 1/4" fpt x 1/4" fpt	2	\$4.49 ea
29	C359A	pump, 1000 psi	1	\$708.99 ea
30	P511	LX series base	1	\$196.99 ea
31	PH615-32	sol hose, 1/2", 3045psi, black	1	\$8.99 ft
32	B123	adapter, brass, 1/2" barb x 1/4" fpt	1	\$4.99 ea
33	G068	bumper, 7/8" x 1/4" head	2	\$1.99 ea
34	H486	latch, front	2	\$13.99 ea
35	H230	screw, 10-32 x 1/2" phil pan head, s/s	18	\$0.99 ea
36	H221	nut, lock, 1/2" steel	2	\$1.99 ea
37	H220	fitting, strain relief, cord	2	\$3.19 ea
38	E550	power cord, pigtail, 30", 12/3, black	2	\$11.49 ea
39	E564	controller, circuit light	1	\$62.99 ea
40	H039	plate, auto fill/ pump out	1	\$9.99 ea
41	B656A	ball valve, 1/2" m x 1/2" f	1	\$16.49 ea
42	B205B	QD, 1/2" npt x 3/4" mgh, pump-out	2	\$3.99 ea
43	B204	qd, 3/4" female x female garden hose	2	\$9.99 ea
44	H541A	valve, float, autofill	1	\$108.99 ea
45	B198	adapter, 3/4" fgh x 1/2" mpt, w/ gasket	1	\$16.99 ea
46	B167	street elbow, 1/2" fpt x 1/2" mpt	1	\$10.99 ea
47	B303	nipple, 3" x 1/4" npt x 1/4" npt	3	\$8.99 ea
48	B186	elbow, brass, 90 deg, 3/8"mpt x 3/8" fmpt	3	\$8.99 ea
49	H299	washer, 11/16" id x 1-1/2" od x .075, s/s	9	\$0.99 ea
50	B216	nipple, brass, 3/8" x close	2	\$1.99 ea
51	B210	bushing, brass, 1/2"mpt x 3/8" fpt, hex	2	\$2.49 ea
52	B119A	filter, strainer, 1/2"	1	\$6.49 ea
53	H201	bolt, 1/4-20 x 1/2", hex head, zinc	2	\$0.99 ea
54	H213	washer, 1/4" lock, s/s	8	\$0.99 ea
55	H378	bracket, front hinge, sp/fb	1	\$8.99 ea
56	H204	bolt, 1/4-20 x 1 3/4" hex head, s/s	2	\$0.99 ea
57	H485	handle, aluminum grip, black	1	\$6.99 ea
58	G052	washer, buna 1-1/8" od x 3/16" id	2	\$1.99 ea
59	H211	washer, 1/4" id x 1" od, flat, s/s	2	\$0.99 ea
60	H768	bolt, 1/4-20 x 3/4" serrated hex flange, zinc	2	\$0.99 ea
61	H650	bolt, 5/16" shoulder x 1-1/2" lg, alloy	1	\$0.99 ea
62	P513	solution tank lid, LTD	1	\$9.00 ea

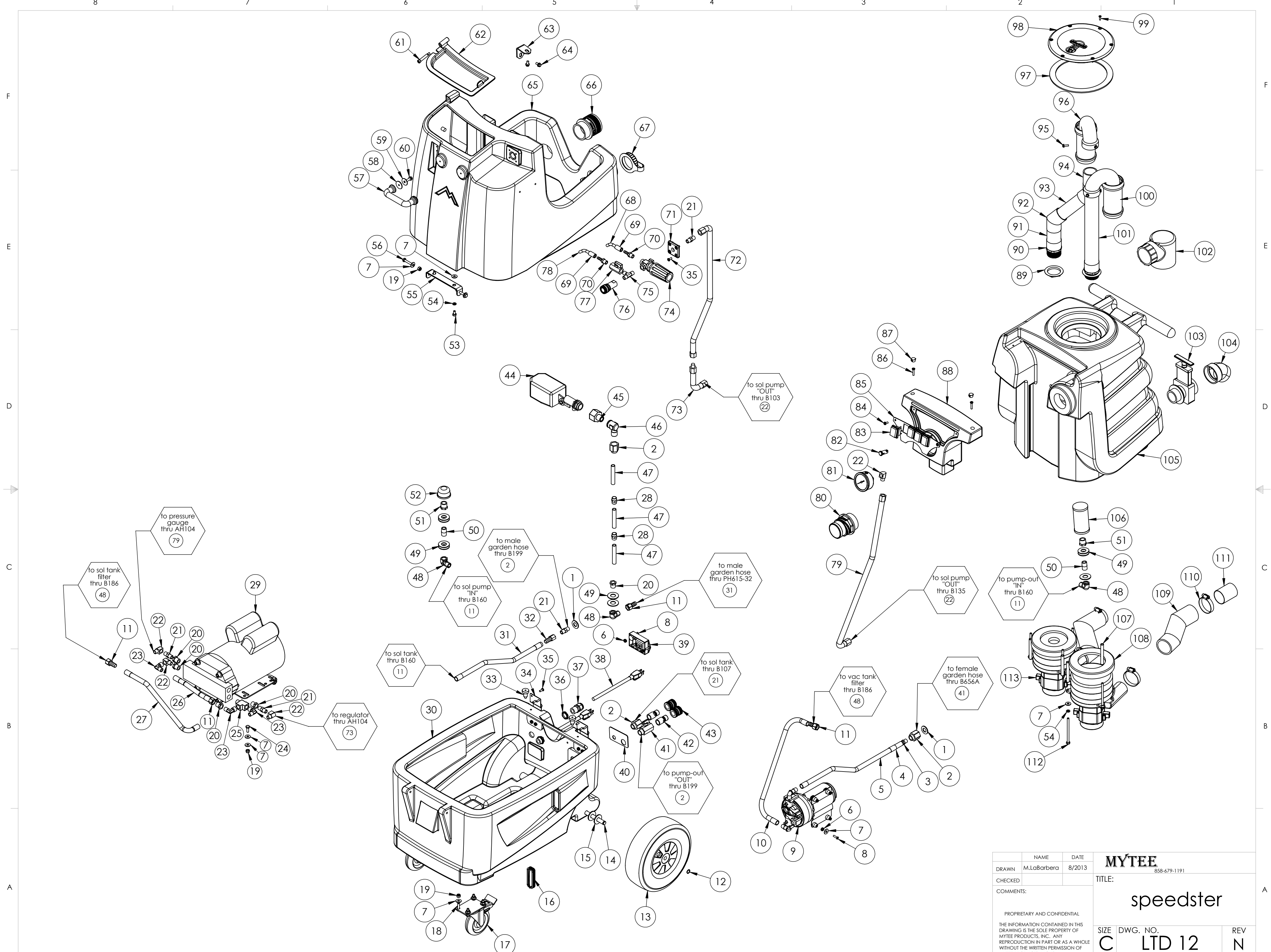
ITEM NO.	PART NO.	DESCRIPTION	QTY.	MSRP
63	H390A	bracket, "L"	2	\$6.99 ea
64	H770	bolt, 1/4-20 x 1/2" serrated hex flange, zinc	4	\$0.99 ea
65	P509	LX series sol tank	1	\$141.95 ea
66	H124	Cuff-Lynx, 2" mpt x 2" female cuff	2	\$3.99 ea
67	G036	cap, 2.5" threaded, tethered	1	\$3.49 ea
68	PH634-20	sol hose, 1/4", 300 PSI	1	\$6.49 ft
69	B170	ferrule, 1/4" brass	2	\$0.99 ea
70	B109	adapter, brass, 1/4" barb x 1/4" mpt	2	\$1.99 ea
71	H484	plate, mounting, QD	1	\$4.99 ea
72	AH117	sol hose, 1/4" x 39", 1/4" fsw x 1/4" fpt	2	\$35.99 ea
73	AH104	sol hose, 3/8" x 10", (OAL)	2	\$47.99 ea
74	C359C	regulator, 1000 psi, white spring	1	\$162.00 ea
75	B135	tee, brass, 1/4" mpt	1	\$5.49 ea
76	B102	qd, brass, 1/4" f x 1/4" fpt	1	\$17.99 ea
77	B656	ball valve, 1/4"	1	\$13.49 ea
78	PH634-36	sol hose, 1/4", 300 PSI	1	\$6.49 ft
79	AH117	sol hose, pulse, 3/8" x 49", 1/4" fsw x 1/4" fsw	1	\$45.99 ea
80	H135	Cuff-Lynx, 2" m cuff x 2" mpt	1	\$3.99 ea
81	H308D	gauge, pressure, 2000 PSI	1	\$38.99 ea
82	E512B	light, indicator, 125v (amber)	1	\$9.99 ea
83	E515	switch, rocker, 2 position	4	\$13.99 ea
84	H029	plastite screw, 10 x 1/2"	2	\$0.99 ea
85	H074	plate, switch, ltd5, ltd12	1	\$5.99 ea
86	H031	plastite screw, 10 x 1"	2	\$0.99 ea
87	H434	plug, vent, heyco, 1/2"	2	\$4.48 ea
88	P512	LX series switchbox	1	\$24.00 ea
89	H314	nut, lock, 1-1/2", steel	2	\$1.99 ea
90	P520	adapter, pvc, 1-1/2" mpt x 1-1/2" fms	2	\$2.99 ea
91	PH633-4	pipe, pvc, 1-1/2"	1	\$4.99/ft
92	P503	adapter, 1.5" pvc, 45 deg, fslip x fslip	2	\$3.29 ea
93	PH633-6	pipe, pvc, 1.5"	1	\$4.99 ft
94	PH633-03	pipe, pvc, 1-1/2"	1	\$4.99/ft
95	H343	screw, 10 x 5/8" hex head, zinc	6	\$0.99 ea
96	P755	elbow, U, 180, 1-1/2", float	2	\$8.99 ea
97	G091	gasket, 7", vac lid	1	\$11.99 ea
98	G090	lid, vac tank, clear, 7"	1	\$36.99 ea
99	H304	screw, #8 x 5/8 phil oval, s/s	6	\$0.99 ea
100	H490	float, 2' 1.5" ball style	2	\$19.99 ea
101	PH633-13	pipe, pvc, 1-1/2"	1	\$4.99/ft
102	A926	elbow, inlet assembly 2"	1	\$15.99 ea
103	H225	valve, drain, 1-1/2"	1	\$20.99 ea
104	H226	spout, drain, 45 degree	1	\$3.19 ea
105	P510	LX series vac tank	1	\$99.99 ea
106	H333	mesh filter, auto dump, 1/2" npt	1	\$12.99 ea
107	H503	vac support, 3 stage, 3.25", no thrds	6	\$3.99 ea
108	G004	gasket, vacuum motor	2	\$8.99 ea
109	PH628-7	vac hose, 2", black, wire reinforced	2	\$8.99 ft
110	H217	clamp, hose, 2-1/4 dia	4	\$1.49 ea
111	H194	coupler, 2" dia x 2.5" length, s/s	2	\$10.00 ea
112	H096	bolt 1/4-20 x 4, s/s	6	\$0.99 ea
113	C302LA	vac motor, 3 stage, low amp	2	\$139.99 ea

ITEMS NOT SHOWN

PART NO.	DESCRIPTION	QTY	MSRP
E530	power cord, ext 50', 12/3, black	2	\$74.99 ea
E356	harness, electrical	1	\$78.99 ea
G008	piglet filter	1	\$6.29 ea
G076	filter bag, 3.5" metal o-ring, mesh bag	1	\$4.99 ea
H110	Cuff-Lynx, 2: hose x 2" fem swivel	1	\$3.99 ea
H141	Cuff-Lynx, 2: x 1.5" reducer	1	\$3.99 ea
H375	hanger, wire formed, hose	1	\$6.99 ea
P568A	cord lock, S-type	2	\$8.99 ea



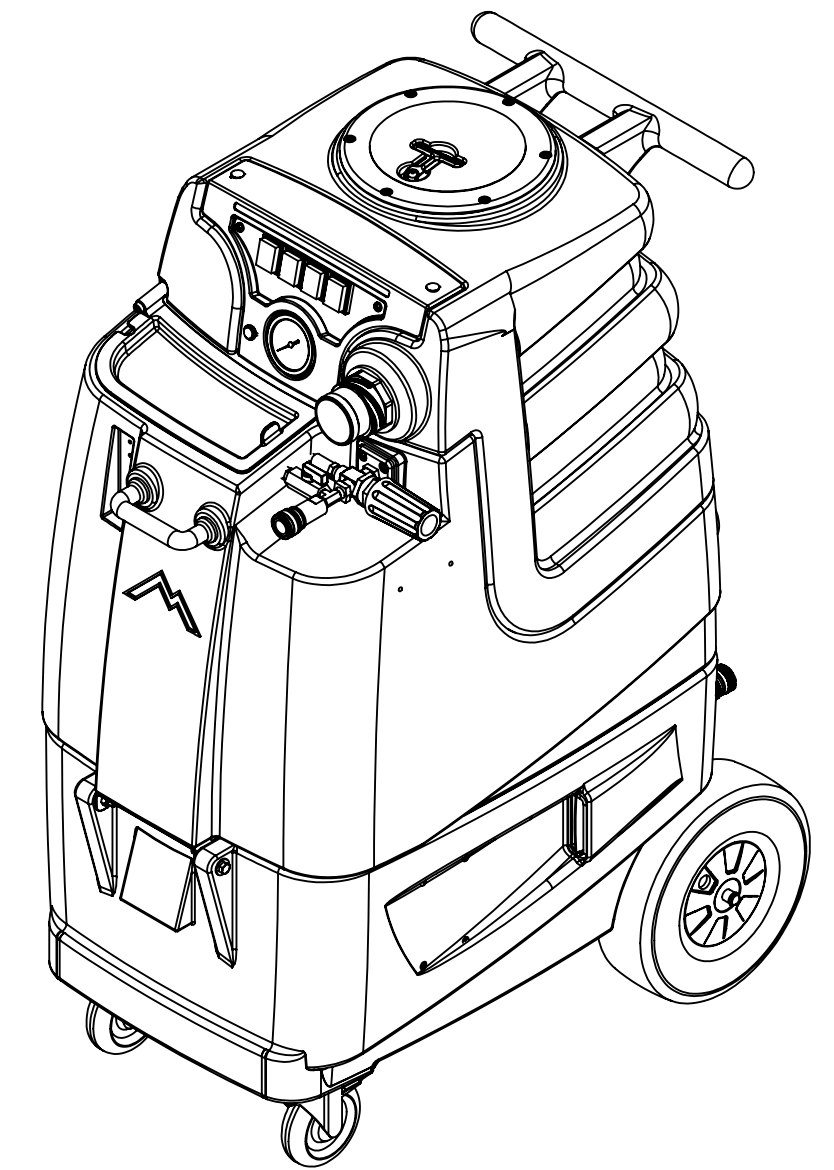
NAME	DATE	MYTEE	
DRAWN M.LaBarbera	10/2013	858-679-1191	
CHECKED		TITLE:	
COMMENTS:		speedster	
<small>PROPRIETARY AND CONFIDENTIAL THE INFORMATION CONTAINED IN THIS DRAWING IS THE SOLE PROPERTY OF MYTEE PRODUCTS, INC. ANY REPRODUCTION IN PART OR AS A WHOLE WITHOUT THE WRITTEN PERMISSION OF MYTEE PRODUCTS, INC. IS PROHIBITED.</small>			
SIZE	DWG. NO.	REV	
C	LTD 12	N	
SCALE: 1:12	DO NOT SCALE DRAWING	SHEET 1 OF 3	



	NAME	DATE	MYTEE	
DRAWN	M.LaBarbera	8/2013	858-679-1191	
CHECKED			TITLE:	
COMMENTS:	speedster			
PROPRIETARY AND CONFIDENTIAL THE INFORMATION CONTAINED IN THIS DRAWING IS THE SOLE PROPERTY OF MYTEE PRODUCTS, INC. ANY REPRODUCTION IN PART OR AS A WHOLE WITHOUT THE WRITTEN PERMISSION OF MYTEE PRODUCTS, INC. IS PROHIBITED.		SIZE	DWG. NO.	REV
		C	LTD 12	N
		SCALE: 1:12	DO NOT SCALE DRAWING	SHEET 2 OF 3

REVISIONS

REV.	DESCRIPTION	DATE	APPROVED
OD	ORIGINAL DRAFT	-	JFL
A	-	-	JFL
B	-	-	JFL
C	REPLACED VAC STACK	6/2013	JFL
D	REPLACED G003 W GO22	8/2013	JFL
E	REPLACED H033 W H342, ADDED H210 & H216	10/8/2013	JFL
F	G021 REPLACED W G097	10/28/2013	JFL
H	UPDATED ITEMS NOT SHOWN	1/13/2014	JFL
I	H347 REPLACED w FERRULE	3/7/2014	ML
J	REPLACED H219 W H042	8/8/2014	ML
K	ADDED AH104	11/25/2014	ML
L	UPDATED PLUMBING	10/7/2015	ML
M	REMOVED ELECTRICAL FLOAT	3/9/2016	ML
N	NEW PUMP, REMOVED CHEMICAL INJECTOR	10/19/2017	ML



	NAME	DATE	MYTEE	
DRAWN	M.LaBarbera	10/2013	858-679-1191	
CHECKED			TITLE:	
COMMENTS:			speedster	
<small>PROPRIETARY AND CONFIDENTIAL THE INFORMATION CONTAINED IN THIS DRAWING IS THE SOLE PROPERTY OF MYTEE PRODUCTS, INC. ANY REPRODUCTION IN PART OR AS A WHOLE WITHOUT THE WRITTEN PERMISSION OF MYTEE PRODUCTS, INC. IS PROHIBITED.</small>			SIZE	DWG. NO.
			C	LTD 12
			SCALE: 1:12	DO NOT SCALE DRAWING
			REV	SHEET 3 OF 3
			N	